



Ashley Road, N19

£2,500,000

Dexters



Ashley Road, N19

An outstanding six-bedroom, two-bathroom detached home extending to 2,810 sq.ft over three floors, with a large garden and off-street parking for two cars.

Upon entering the ground floor, you are greeted by a dual reception/entertaining room that offers a comfortable seating area and ample dining space. The conservatory, featuring exposed brick, is currently used as an office and provides direct access to the beautiful garden, which has recently been enhanced with a new patio. The kitchen is to the rear and offers another diner opening to the garden. On the first floor you have the principal bedroom along with two double bedrooms and a shower room. The second floor offers a further three double bedrooms and a family bathroom. Additionally, the property has two utility rooms and ample storage. The owners have put water underfloor heating on the ground floor hallway and electric underfloor heating in the second bathroom, the top floor has double-glazed windows, new carpets have been laid throughout and a new boiler has been installed.

Ashley Road is a quiet leafy residential turning, perfectly positioned on the borders of Crouch End, providing easy access to nearby transport links from Finsbury Park and the amenities of Crouch End, Crouch Hill, Stroud Green, Finsbury Park and Archway.

Features

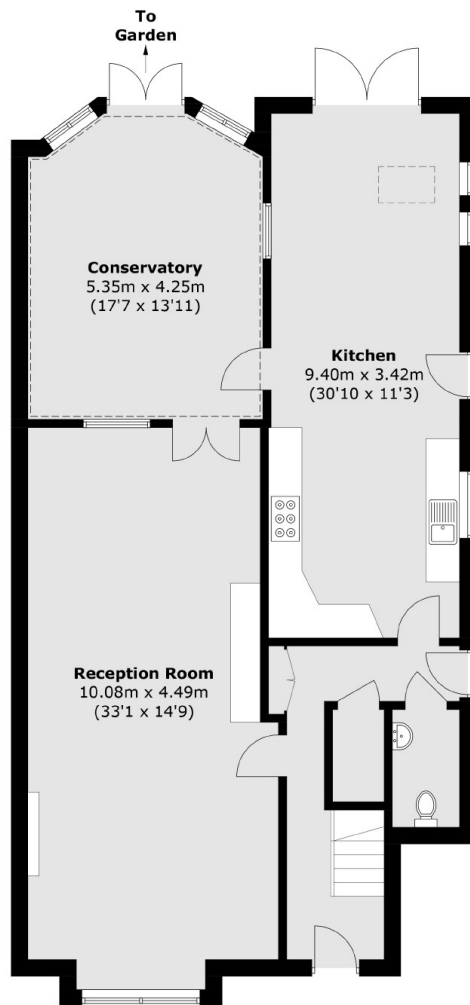
- Six Bedrooms
- Detached/Off Street Parking
- Chain Free
- Great Transport Links
- Large Garden
- Two Bathrooms



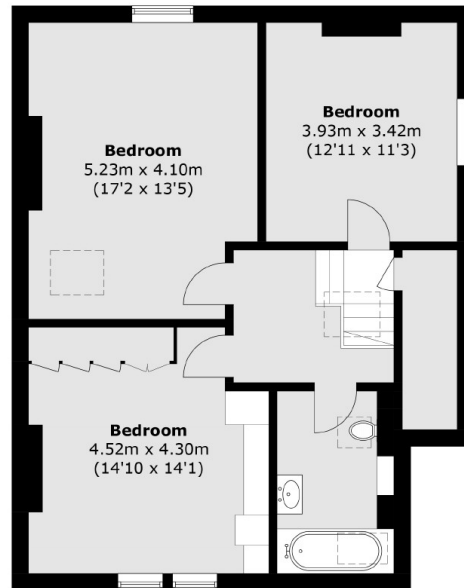




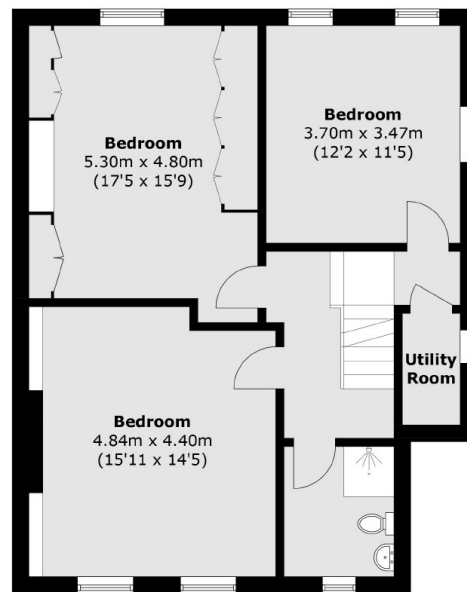
Ashley Road, London, N19



Ground Floor



Second Floor



First Floor

Total area (approx.): 261.1 sq. m (2,810.4 sq. ft)