



## Green Lanes Walk, N4

£625,000

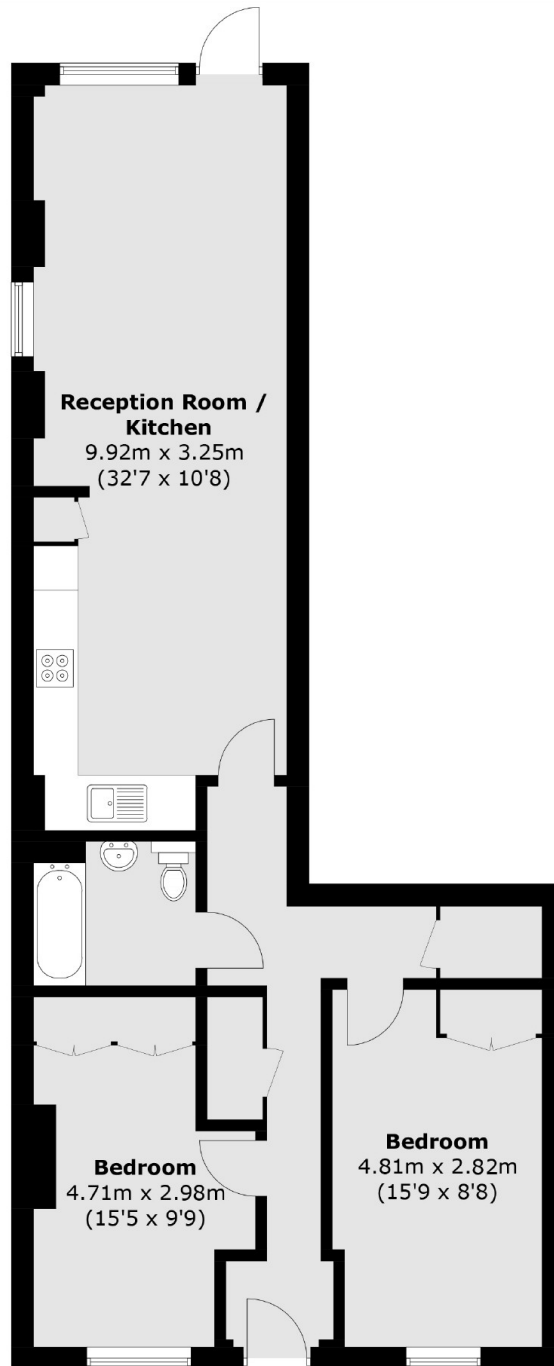
This fantastic two double bedroom flat is located on the ground floor of this modern apartment. The property spans over 840 sq.ft and offers a large open plan reception/kitchen area, which leads out on to a private patio garden.

Woodberry Down is conveniently located just 800 meters from Manor House station (Piccadilly line Zone 2), providing direct links to Kings Cross St Pancras (National Rail, Eurostar) in just 16 minutes. Residents will also appreciate the proximity to the green open spaces of the Wetlands Conservation area, offering water sports and outdoor activities. The development includes a wide range of community facilities, including supermarkets and restaurants.

### Features

- Two Bedroom
- Open Plan
- Private Patio
- Leasehold
- Chain Free
- Excellent Transport Links

# Green Lanes Walk, London, N4



Total area (approx.): 78.3 sq. m (842.8 sq. ft)