



## Tollington Park, N4

£3,500 Per calendar month

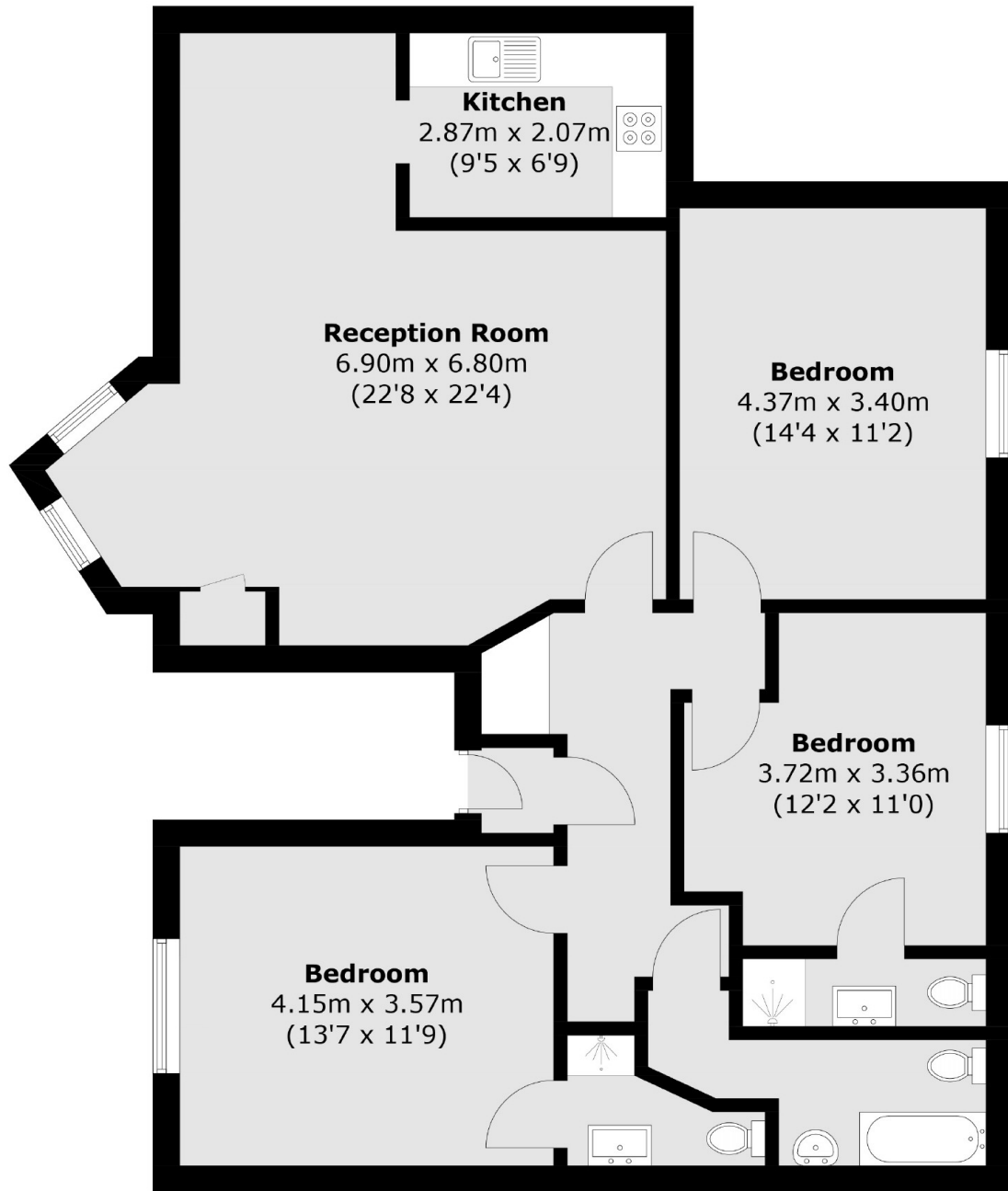
A three double bedroom property located on Tollington Park. This property has wooden floors through out, a semi open plan living space, three bathrooms and is finished to a high standard.

Located on Tollington Park and within easy reach of the local shops and cafes on both Stroud Green and Hornsey Road. Finsbury Park underground station is a short distance away for access to Victoria, Piccadilly and mainline services.

### Features

- Three Double Bedrooms
- Modern Finish
- Three Baths
- Semi Open Plan
- Furnished
- Convenient Location

# Tollington Park, London, N4



Total area (approx.): 100.7 sq. m (1,083.9 sq. ft)