

Tollington Park, N4

£346 Per week

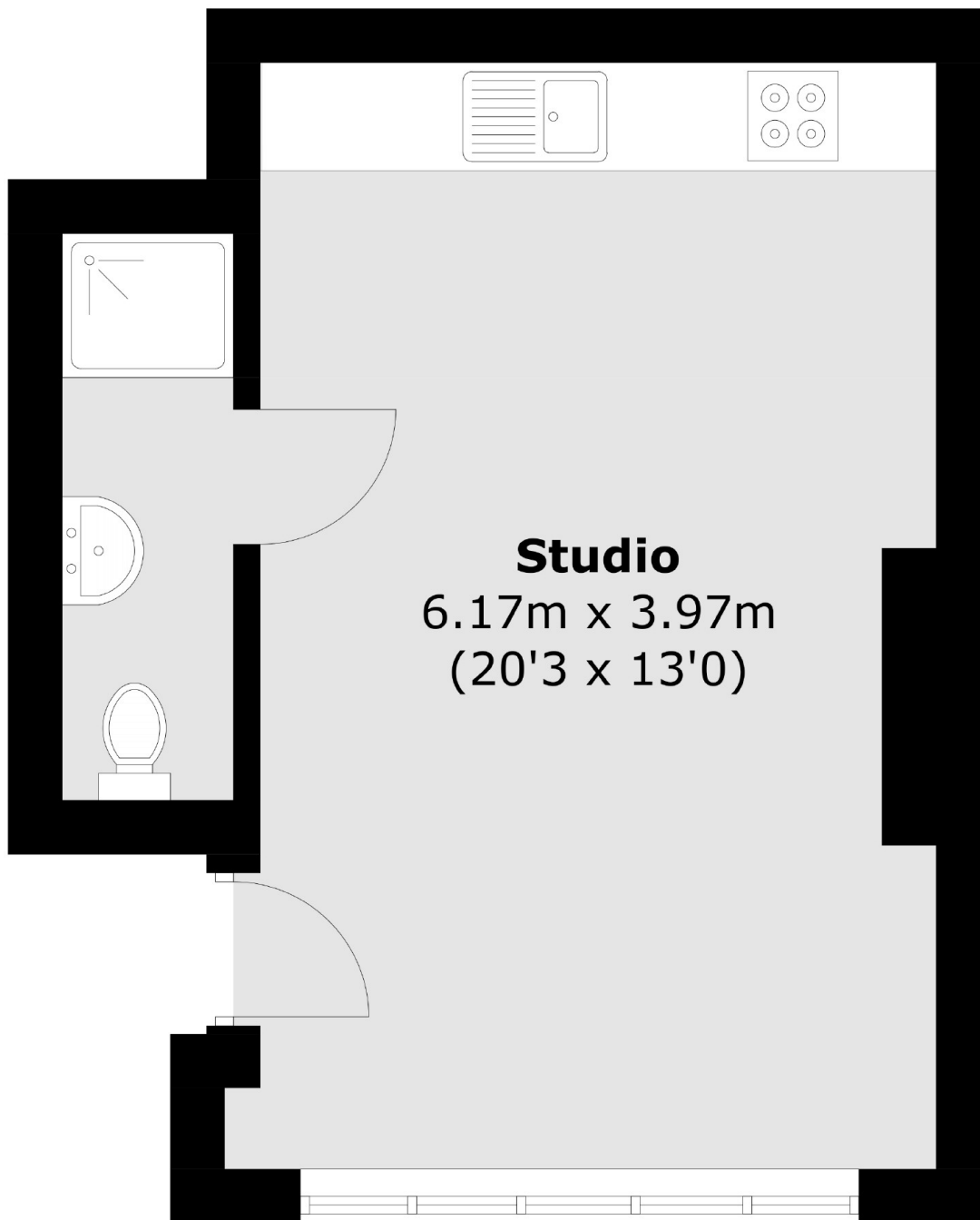
A studio flat on the raised ground of a period converted building. There is a spacious reception with a modern kitchen and wood floors throughout. The studio also has high ceilings and three large windows.

Located on Tollington Park and within easy reach of the local shops and cafes on both Stroud Green and Hornsey Road. Finsbury Park underground station is a short distance away for access to Victoria, Piccadilly and mainline services.

Features

- Studio Flat
- High Ceilings
- Large Windows
- Modern Kitchen
- Wood Floors Throughout
- Great Location

Tollington Park,
London, N4



Total area (approx.): 26.7 sq. m (287 sq. ft)

Dexters

Finsbury Park
87 Stroud Green Road
Finsbury Park
London
Lettings
020 7483 6361

Energy Rating: D. We aim to make our particulars both accurate and reliable. However they are not guaranteed; nor do they form part of an offer or contract. If you require clarification on any points then please contact us, especially if you're traveling some distance to view. Please note that appliances and heating systems have not been tested and therefore no warranties can be given as to their good working order.

 **RICS** | Regulated
Estate Agent
and Letting Agent

dexters.co.uk