



## Thorpedale Road, N4

£700,000

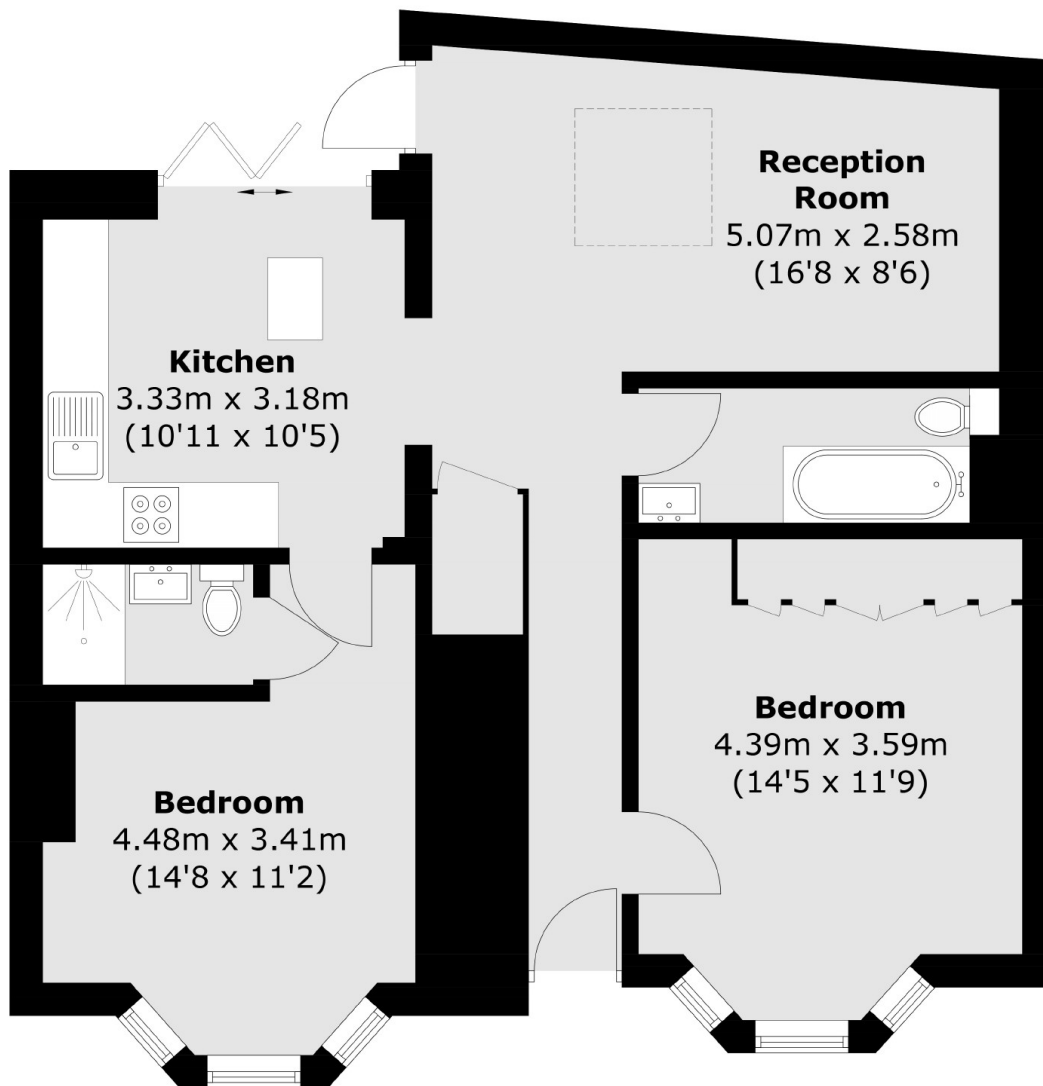
This is a two-bedroom, end-of-terrace, ground-floor flat recently renovated to a high standard. This property features a spacious open-plan kitchen and living area, flooded with natural light. There are bi-folding doors which lead out onto a south-facing garden. Both bedrooms are generously sized, with one benefiting from an en suite bathroom, in addition to a well-appointed separate bathroom.

Thorpedale Road is perfect for commuting from Finsbury Park into the City and the West End with access to the Victoria line, National Rail and Thames Link. The green spaces of Finsbury Park are near by, as are plenty of local pubs, restaurants and shops.

### Features

- Recently Refurbished
- Two Bedrooms
- Open Plan Reception/ Kitchen
- Two Bathrooms
- Garden
- Great Transport Links

# Thorpedale Road, London, N4



Total area (approx.): 67.3 sq. m (724.4 sq. ft)