



## Stroud Green Road, N4

£692 Per week

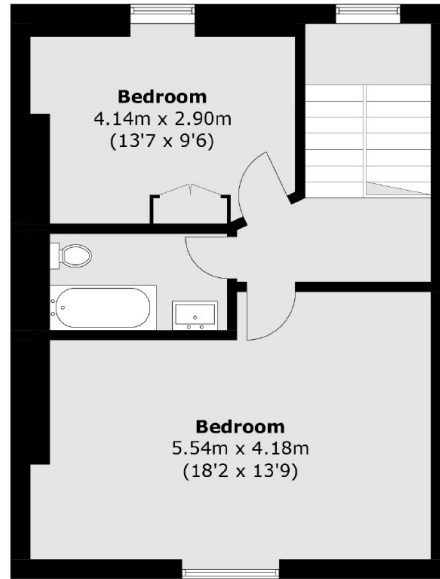
A spacious and modern three double bedroom flat to let in the heart of Finsbury Park. This split level top floor property has three double bedrooms, a good sized living area and a separate kitchen diner and has a wide array of local shops and amenities on the door step. Perfect for three sharing

Stroud Green Road is well situated for local shopping and has a wide variety of restaurants, cafés and supermarkets. Finsbury Park station (Victoria and Piccadilly Lines) is within walking distance for access to Underground and mainland services.

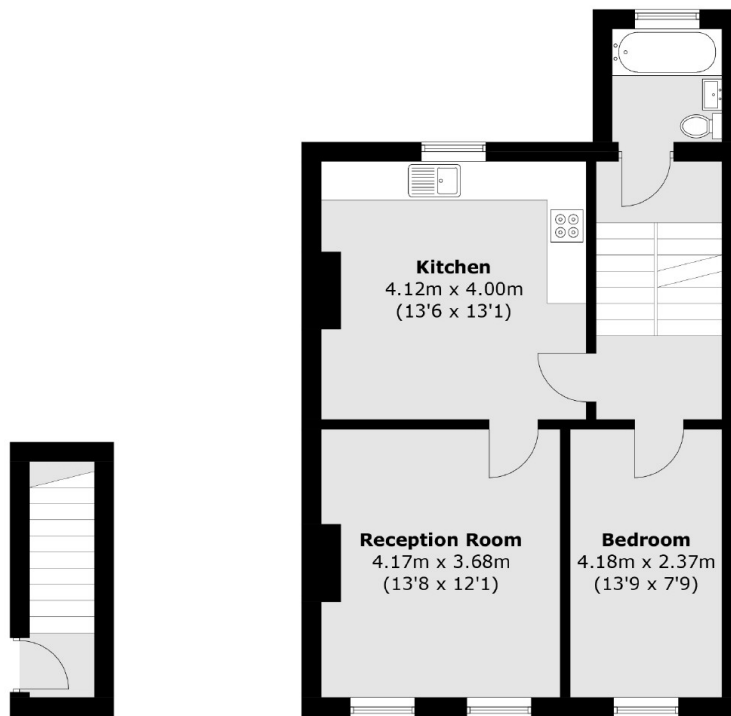
### Features

- Three Double Bedrooms
- Modern Finish
- HMO licence
- Wood Floors
- Great Location
- Finsbury Park Station

Stroud Green Road,  
London, N4



**Third Floor**



**First Floor**

**Second Floor**

Total area (approx.): 108.1 sq. m (1,163.5 sq. ft)