



Quernmore Road, N4

£800,000

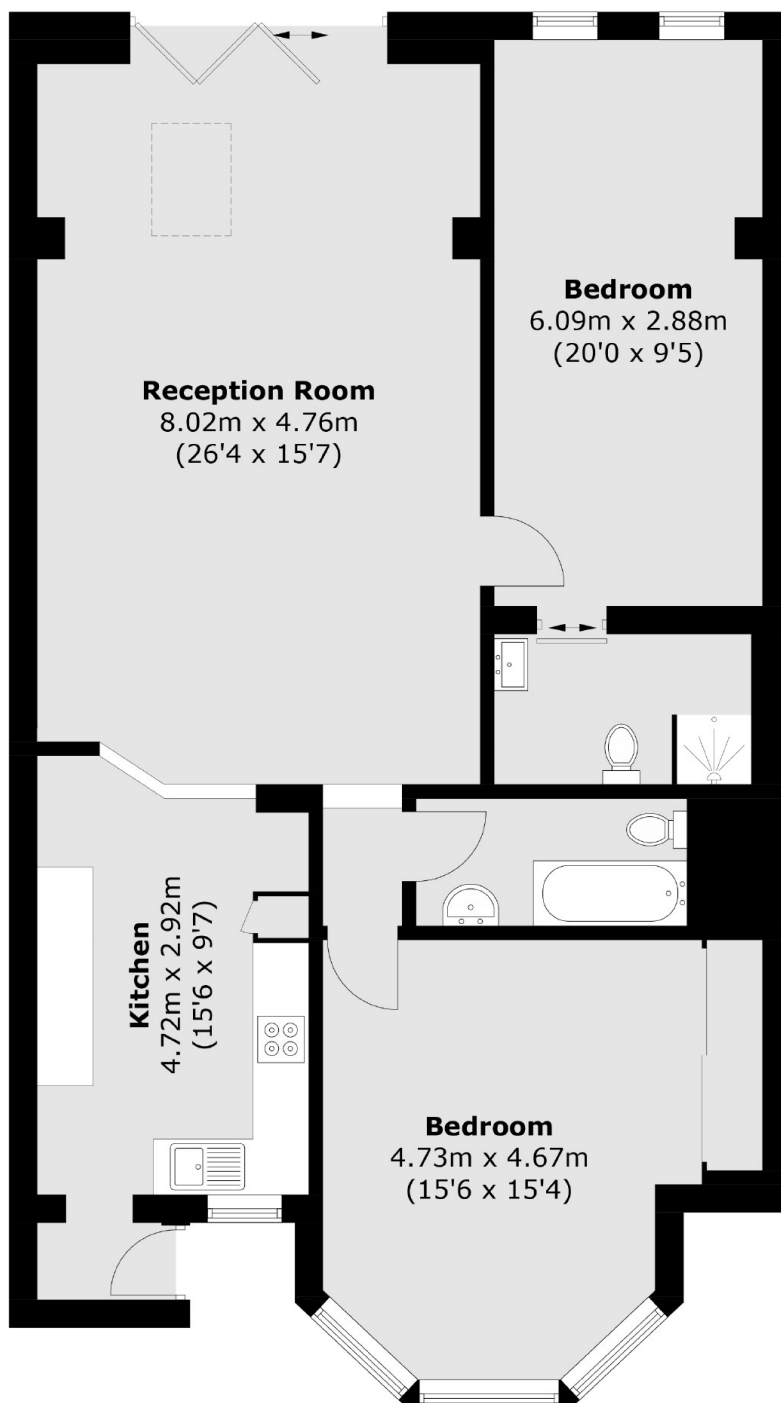
A stunning lower ground flat set in a red-brick Victorian house. The property offers an open plan reception/kitchen which leads out on to a large south facing garden through bi-folding doors. There are two double bedrooms including one en suite, as well as a separate bathroom, high ceilings throughout and lots of natural light.

Located within the sought-after Stroud Green neighbourhood, known for its mix of shopping outlets, pubs, restaurants, and cafes along Stroud Green Road. Parkland Walk is conveniently within a short distance, offering a serene escape amidst nature. The area benefits from great transportation options, including Haringay and Haringay Green Lanes Stations.

Features

- Separated Outhouse/Studio
- Two Bedroom
- Open Plan Reception/Kitchen
- Share of Freehold
- Two Bathrooms
- Garden

Quernmore Road, London, N4



Total area (approx.): 102.6 sq. m (1,104.4 sq. ft)