



Ashley Road, N19

£625,000

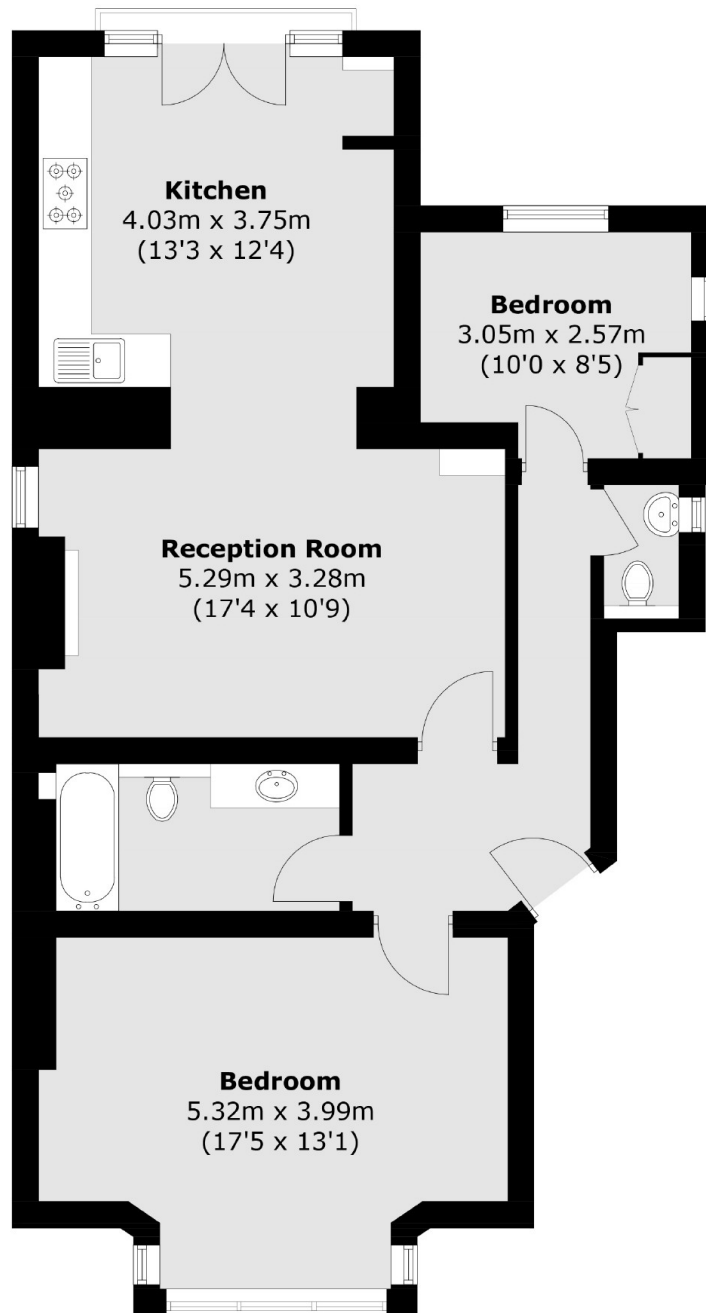
Set within a beautiful and well-maintained Victorian building is this two double-bedroom mid-floor conversion flat. The flat has over 870 sq. Ft of living space and bright interiors throughout. Features include a working fireplace, double patio doors to the Juliet balcony, a contemporary bathroom and a separate W.C.

This quiet residential street is in an ideal location, providing easy access to the fantastic array of shops and restaurants along Crouch End Broadway and Stroud Green Road. The property is also just minutes away from London's longest local nature reserve Parkland Walk and Finsbury Park. There are good transport connections to Archway and Finsbury Park Tube station (Great Northern, Thameslink, Victoria and Piccadilly Lines).

Features

- Two Double Bedrooms
- Recently Renovated
- Share Of Freehold
- Excellent Transport Links
- Juliet Balcony
- Chain Free

Ashley Road, London, N19



Total area (approx.): 81.3 sq. m (875.1 sq. ft)