



## City North Place, N4

£1,153 Per week

A three double bedroom penthouse in the new City North Place Tower development with fantastic city views. It has three bathrooms, an open-plan kitchen/reception, and a private balcony and is finished to a high standard throughout.

City North Place is ideally placed next to Finsbury Park and is moments from the underground station as well as a wide variety of independent shops, cafés and restaurants.

### Features

- Split Level Penthouse
- Three Double Bedrooms
- Amazing Views
- Open Plan Living
- Private Balcony
- Great Location



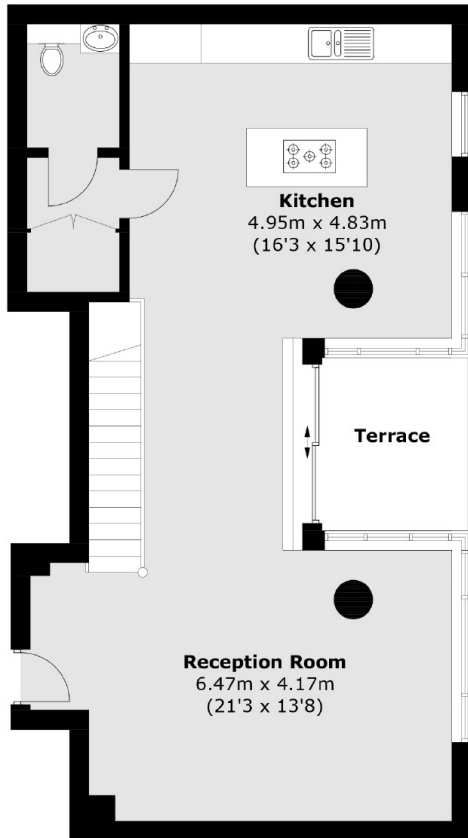
## City North Place, N4

This stunning split-level apartment spans over 1,200 sq ft and offers a modern way of living. The open-plan reception area is perfect for entertaining and the floor to ceiling windows provide amazing views.

The kitchen is fully integrated with an island and leads out to a private balcony. All three bedrooms are good-sized doubles and two come equipped with an en-suite. There is also a family bathroom to complete the apartment. The development has a concierge and communal roof terrace.



City North Place,  
London, N4



**Twenty First Floor**



**Twenty Second Floor**

Total area (approx.): 141.9 sq. m (1,527.4 sq. ft)  
Terrace (approx.): 5.9 sq. m (63.5 sq. ft)