



## Avenue Road, N15

£500,000

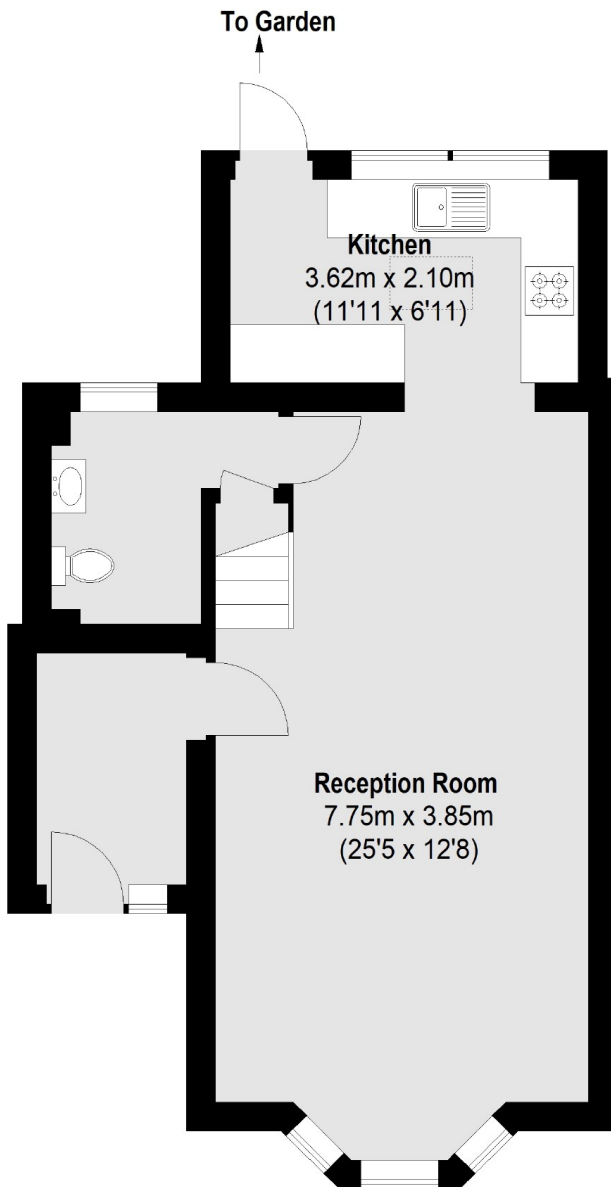
A rare, detached, bright and spacious, Victorian freehold property situated in a popular, quiet residential turning only moments away from the green open spaces of Downhill Park Recreation Ground.

Avenue Road is located just a short walk away from Seven Sisters Underground (Victoria Line) and Overground Station offering direct transport links into The City, The West End and beyond. South Tottenham Station is also nearby. There is a selection of fantastic coffee shops, cocktail bars, restaurants and cafés as well as the open spaces of the popular DownHill Park which are all within walking distance from this wonderful property.

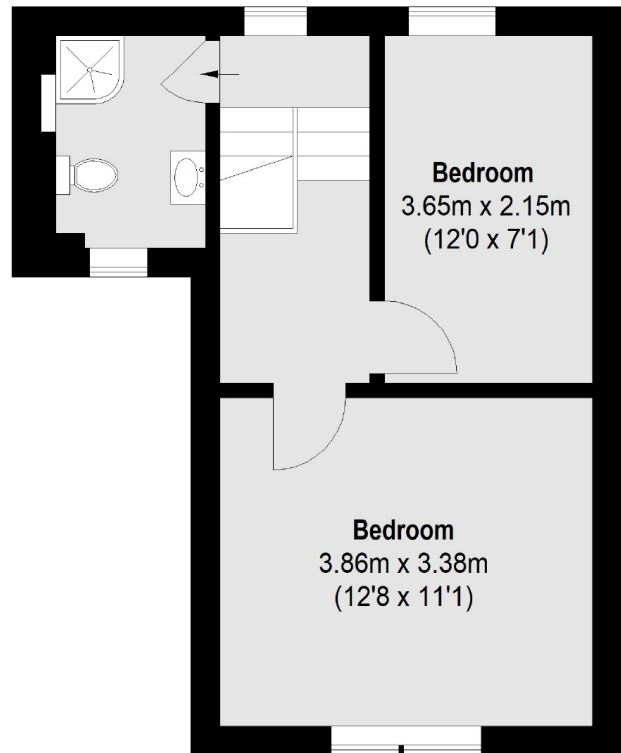
### Features

- Freehold
- Two Bedroom
- Downstairs W/C
- Chain Free
- Great Location
- Courtyard Garden

# Avenue Road, London, N15



**Ground Floor**



**First Floor**

Total area (approx.): 77.75 sq. m (837 Sq. ft)