



## Wray Crescent, N4

### £439,500

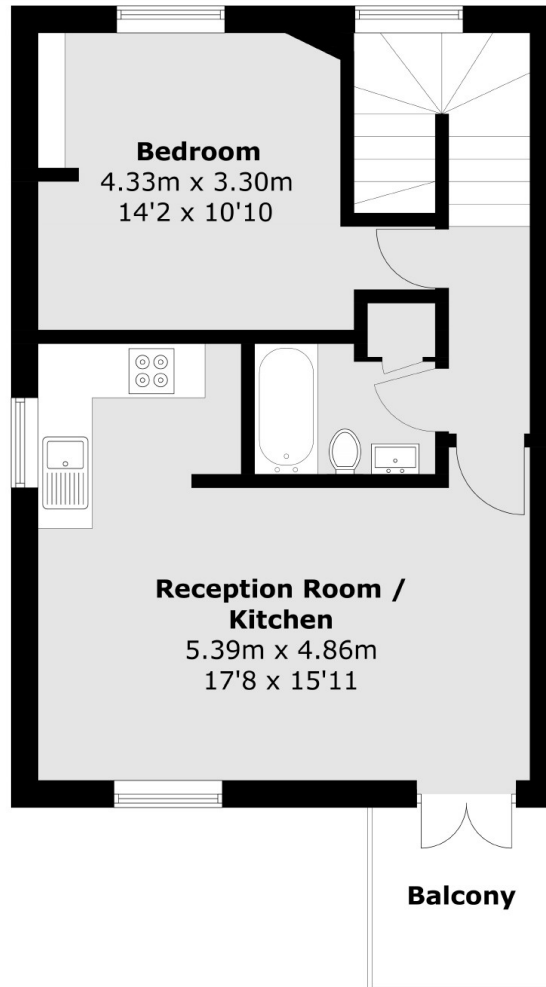
A light and airy, dual aspect, one-bedroom, top-floor flat with excellent views set within a Victorian house. The flat measures approximately 500 sq ft and has a good-sized living/dining room leading into a separate kitchen and onto a south west facing balcony. The property is being offered to the market chain-free.

Wray Crescent is a quiet cul-de-sac with a popular park and recreational area at the end of the street as well as easy access to the selection of independent shops, cafes, bakeries, wine bars and restaurants in trendy Stroud Green. The green, open spaces of Finsbury Park are nearby with Finsbury Park tube station only a short walk away.

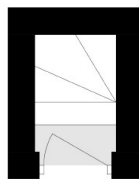
### Features

- End of Terrace Conversion
- One Double Bedroom
- Private Terrace
- Sole Use of Large Loft
- Joint Freehold
- Excellent Transport Links

# Wray Crescent, London, N4



## Second Floor



## First Floor

Total area (approx.): 46.7 sq. m (502.7 sq. ft)  
Balcony: 46.7 sq. m (502.7 sq. ft)

**Dexters**

Finsbury Park  
87 Stroud Green Road  
Finsbury Park  
London  
Sales  
020 7483 6360

Energy Rating: D. We aim to make our particulars both accurate and reliable. However they are not guaranteed; nor do they form part of an offer or contract. If you require clarification on any points then please contact us, especially if you're traveling some distance to view. Please note that appliances and heating systems have not been tested and therefore no warranties can be given as to their good working order.

 **RICS** | Regulated  
Estate Agent  
and Letting Agent

dexters.co.uk