



Seven Sisters Road, N7

£675,000

Dexters



Seven Sisters Road, N7

A modern two double bedroom, two bathroom apartment set on top floor of this modern development. The property spans over 760sq.ft and is being offered to the market chain free.

There is an open-plan reception room which leads out onto a large private-facing roof terrace, and a modern fitted kitchen with integrated appliances. The principal bedroom has ample storage and an en-suite, there is another double bedroom with a family bathroom.

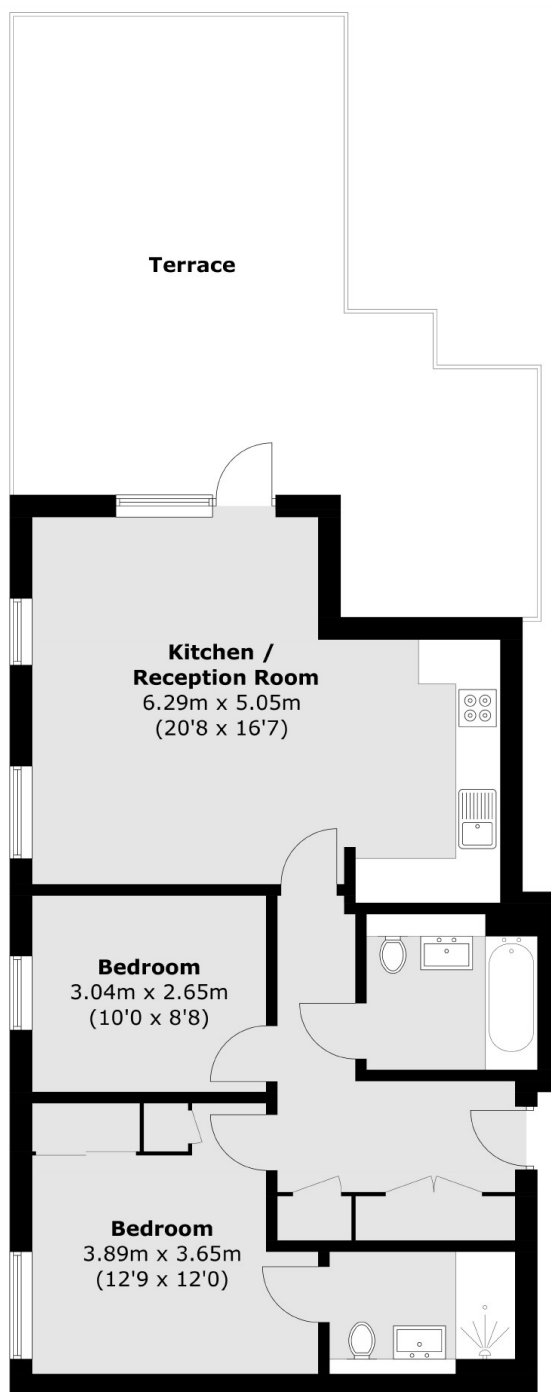
Seven Sisters Road is well-located for access to Finsbury Park station (Piccadilly line, Victoria line and National Rail) and is also close to plethora of nearby independent shops, bars, restaurants, coffee shops and shopping facilities. The green open spaces of Finsbury Park are also close by.

Features

- Modern Development
- Two Double Bedrooms
- Two Bathrooms
- Long Lease
- Balcony
- Excellent Transport Links



Seven Sisters Road, London, N7



Total area (approx.): 70.8 sq. m (762.0 sq. ft)
Terrace area : 38.4 sq. m (413.3 sq. ft)