



## Thane Villas, N7

£350,000

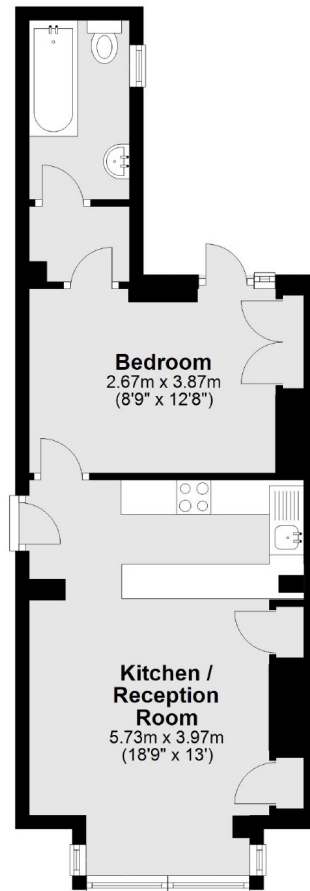
This ground floor one double-bedroom apartment is located in a Victorian mansion block and is being offered the market chain free. The property would be perfect for a first-time buyer and benefits from a large shared garden.

Thane Villas is a peaceful, residential road that offers easy access to local amenities and transport links from Arsenal & Holloway Road Underground Station and Drayton Park mainline. The open green spaces of Finsbury Park and Gillespie Park are close by along with an array of shops, cafes and restaurants on Blackstock Road.

### Features

- One Bedroom
- Chain Free
- Open Plan Kitchen/Living
- Ground Floor
- Communal Gardens
- Share of Freehold

# Thane Villas, London, N7



Total area: approx. 37.9 sq. metres (408.4 sq. feet)