



Mount View Road, N4

£3,000,000

Dexters



Mount View Road, N4

Situated on a highly sought-after residential turning and offering stunning views over the City of London, this rarely available double-fronted, five-bedroom detached Victorian house spans four floors and has a large garden. It offers approximately 3,600 sq ft of accommodation.

The split-level ground floor accommodates additional living spaces, including a rear-facing reception room, a convenient W.C., a utility room, and a studio room, catering to the diverse needs of modern living. Descending the staircase to the basement room reveals ample storage space and utilities. Ascending to the upper floors, you'll find a thoughtfully designed layout, with a bathroom, shower room and additional W.C. Conveniently situated on the half landing. The first floor opens up to a large landing, leading to four bedrooms and an office room. The fifth bedroom, nestled aloft on the half landing, provides privacy and tranquillity, with access to the two rooms in the loft via a small staircase.

Mount View Road sits on the borders of Crouch End with easy access to the array of shops on the Broadway and Ofsted outstanding' St. Aiden's primary school 0.1m. The popular Stroud Green Road is also within easy walking distance with Crouch Hill Station just 0.4m.

Features

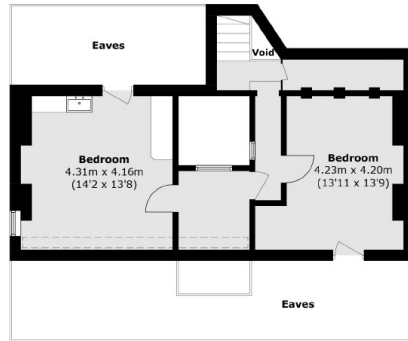
- Detached Victorian House
- Double Fronted
- Lots of Period Features
- Five Bedrooms
- Three Reception Rooms
- Large Rear Garden



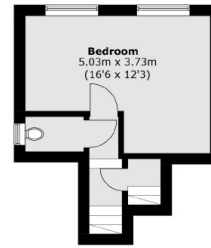




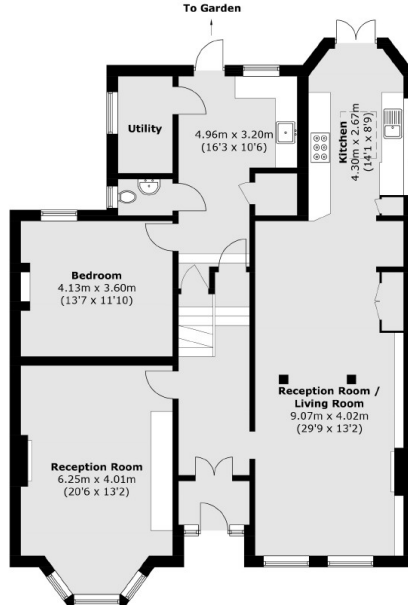
Mount View Road, London, N4



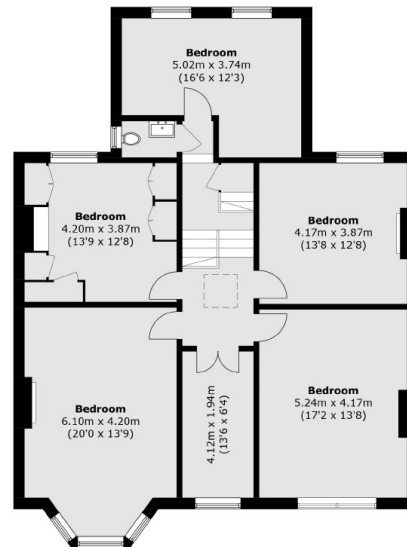
Third Floor



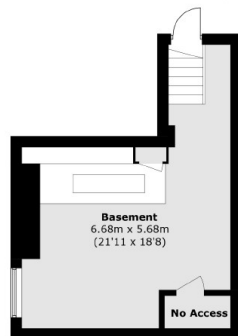
Second Floor



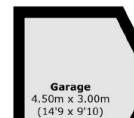
Ground Floor



First Floor



Lower Ground Floor



(Not Shown In Actual Location / Orientation)

Total area (approx.): 344.5 sq. m (3,708.2 sq. ft)
(Excluding Eaves / Void)

Garage (approx.): 12.5 sq. m (134.5 sq. ft)