

City North Place, N4

£675,000

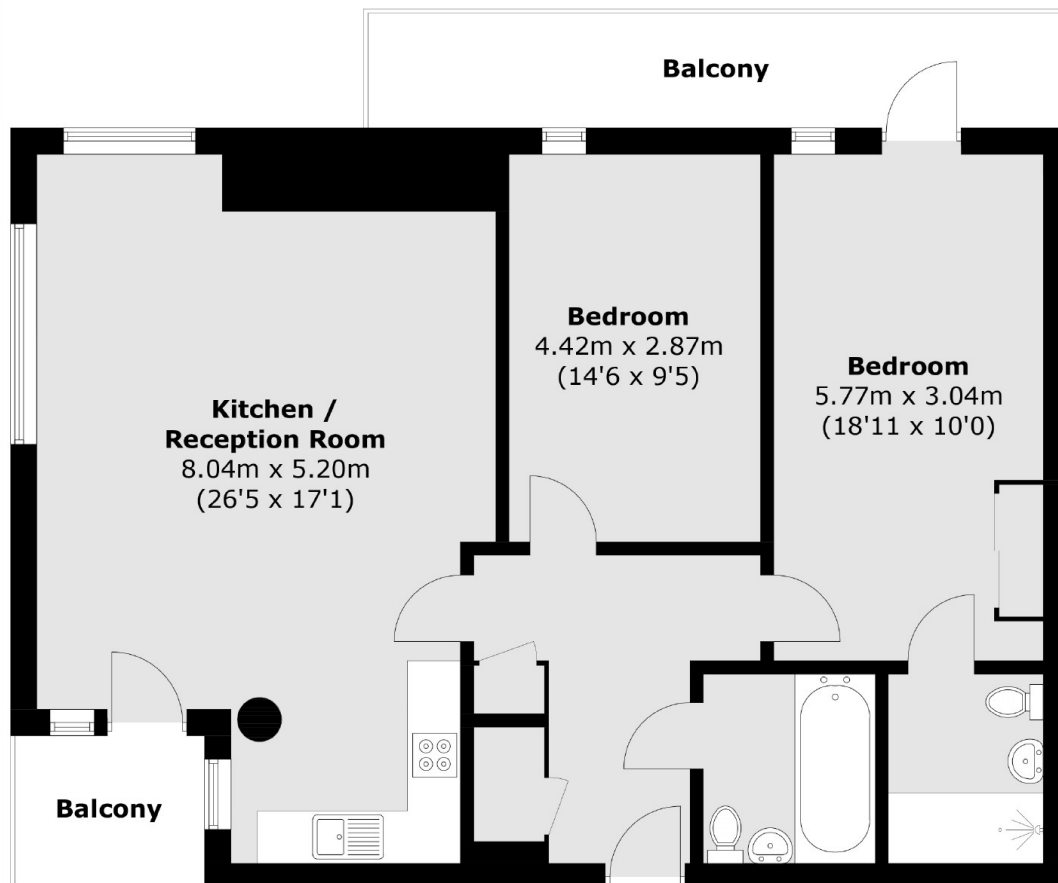
A two double bedroom apartment in the new City North East Tower development with fantastic city views. It has two bathrooms, an open plan kitchen/reception, a private balcony and is finished to a high standard throughout.

City North Place is ideally placed next to Finsbury Park and is moments from the underground station as well as a wide variety of independent shops, cafés and restaurants.

Features

- Two Bedroom
- 24 Hour Concierge
- Amazing Location
- Paramount Views
- Chain Free
- Balcony

City North Place, London, N4



Total area (approx.): 88.3 sq. m (950.5 sq. ft)
Balcony area : 13.9 sq. m (149.6 sq. ft)