



## Katherine Close, N4

£403 Per week

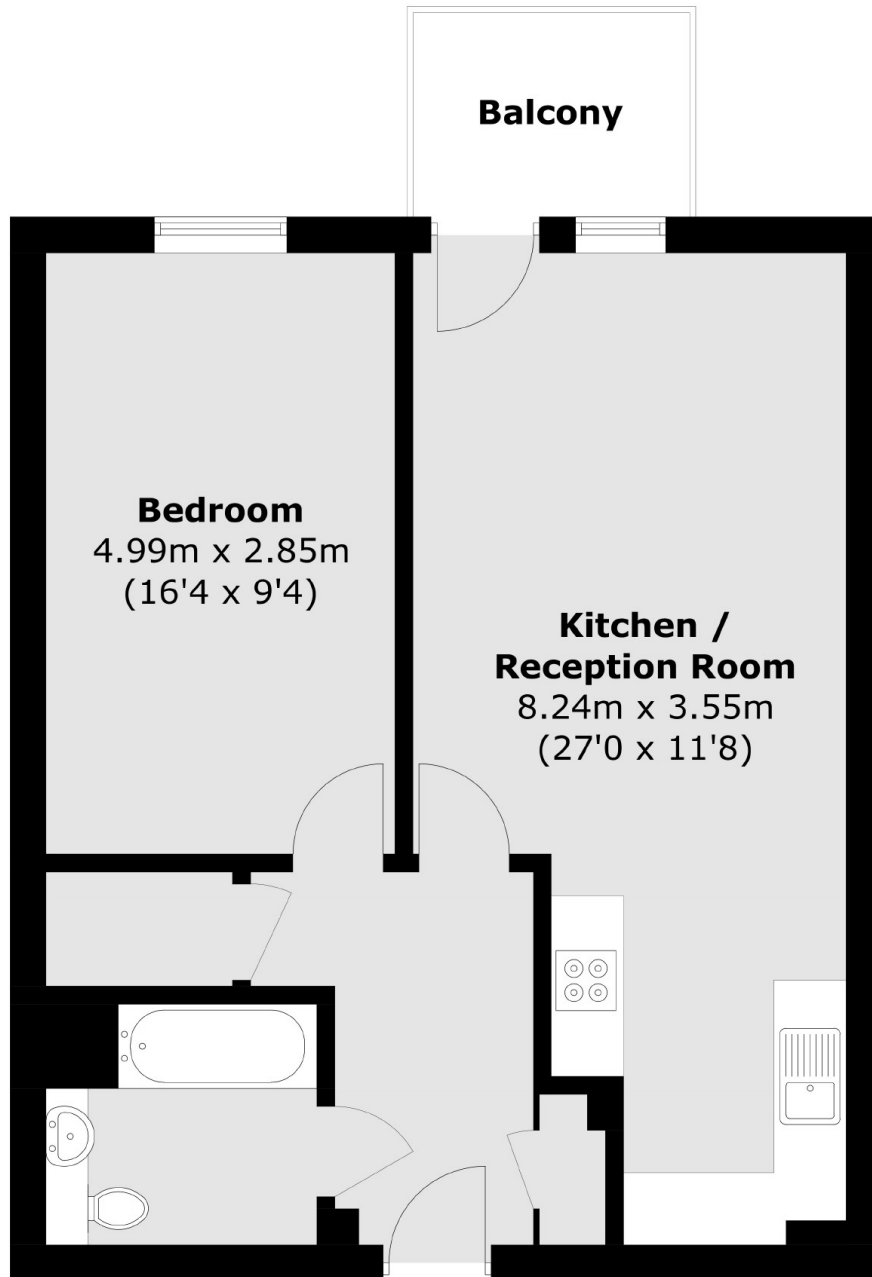
A one double bedroom property in Maplewood Apartments. This property has an open plan living area with a private balcony, a double bedroom and good sized bathroom. The flat is offered furnished or unfurnished.

Woodberry Grove is ideally located within easy reach of Manor House station as well as the green open space of Finsbury Park.

### Features

- One Double Bedroom
- Open Plan
- Secure Development
- Private Balcony
- Great Location
- Close to Finsbury Park

Katherine Close,  
London, N4



Total area (approx.): 55.1 sq. m (593.1 sq. ft)  
Balcony area (approx.): 3.9 sq. m (42 sq. ft)