



Playford Road, N4

£1,200,000

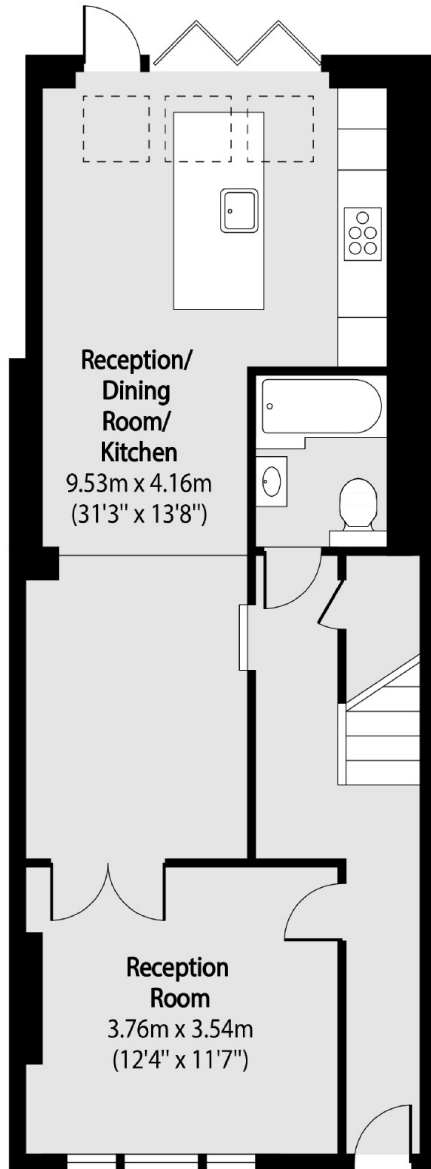
This well-presented mid-terrace house on Playford Road is bright and spacious with double-glazed windows and doors. There are four double bedrooms, two bathrooms, a double reception room and a contemporary kitchen with bi-fold doors leading to a private garden.

Playford Road is conveniently located to access several shops, cafés and eateries, as well as the open green spaces of Finsbury Park, Parkland Walk and Woodberry Wetland Nature Reserve. Finsbury Park station is close by with access to the Piccadilly Line, Victoria Line and National Rail connecting you to the City, West End and beyond.

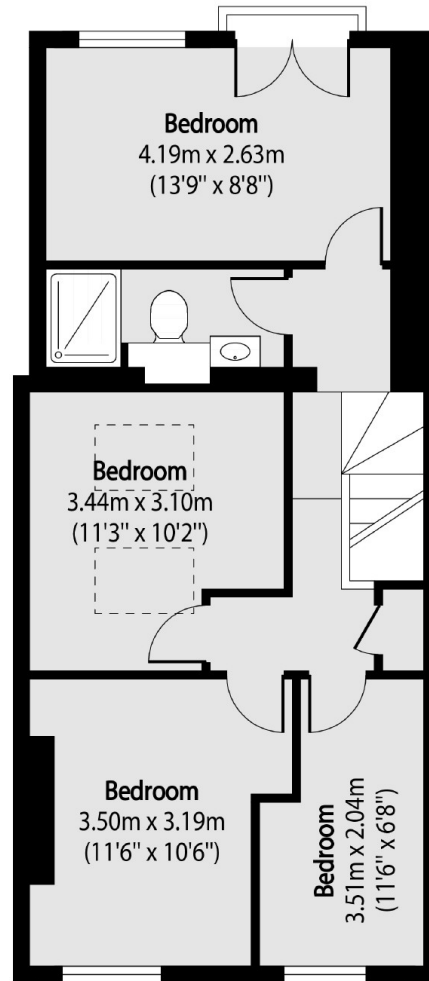
Features

- Four Bedrooms
- Quiet Road
- Underfloor Heating
- Two Bathrooms
- Open-Plan Kitchen/Diner
- Garden

Playford Road, London, N4



Ground Floor



First Floor

Total area (approx): 110.78 sq m (1192 sq. ft)