



## Carville Street, N4

£425,000

A bright three double bedroom purpose built flat. This well-laid-out home has a spacious living room providing space for both living and dining areas, there is a separate kitchen and it is being sold with no onward chain.

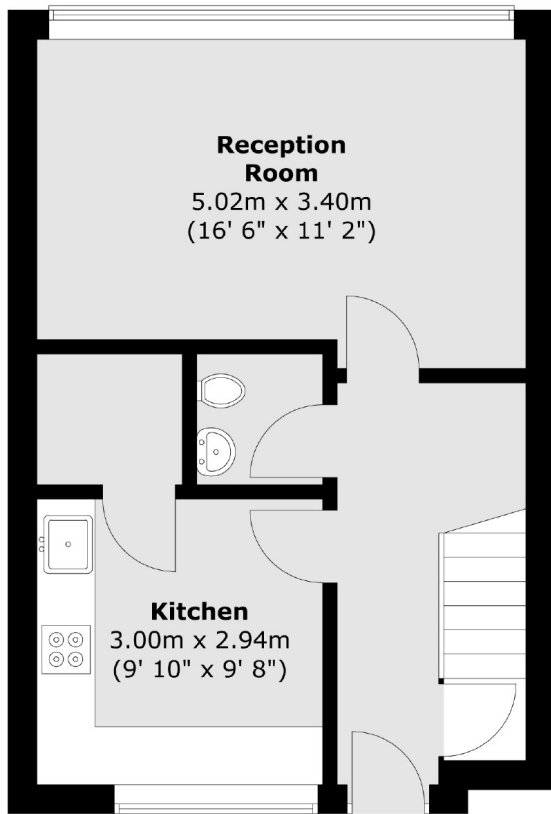
Carville Street is perfectly located for easy access to Finsbury Park station (Piccadilly line, Victoria line, National Rail) as well as several bus routes connecting you to the City, West End and beyond. The green open spaces of Finsbury Park are also within close proximity as well as a great selection of amenities including supermarkets, eateries, independent coffee shops, wine bars and bakeries.

### Features

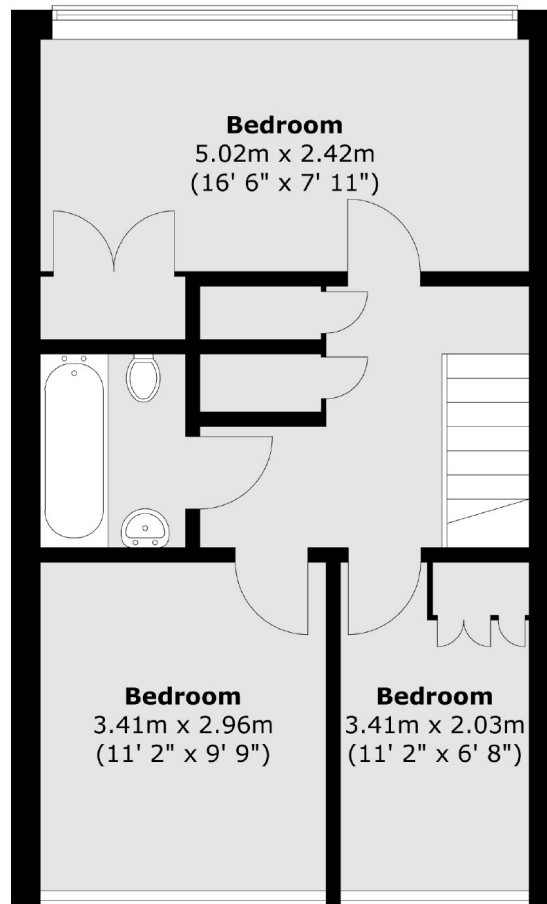
- Investment Opportunity
- Three Bedroom
- Large Reception Room
- Leasehold
- Chain Free
- Great Transport Links

# Carville Street, London, N4

**First Floor**



**Second Floor**



Total area (approx.) : 83.3 sq. m (897 sq. ft)