



Wray Crescent, N4

£439,500

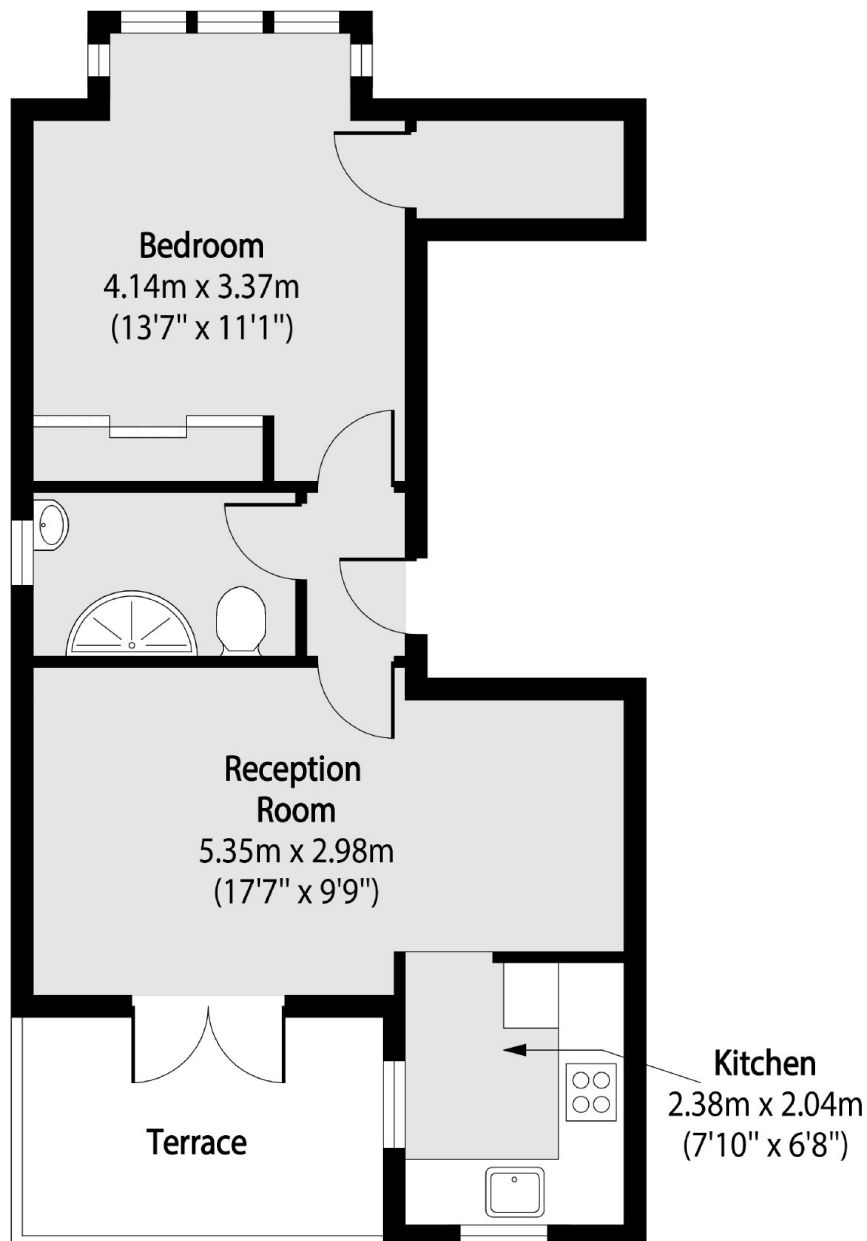
A well-presented first-floor flat within a Victorian house. This property comes with a private terrace leading off the open plan kitchen/ living space and a very spacious double bedroom, separated from the communal areas. This property will also be sold as chain-free.

Wray Crescent is a quiet, tree-lined residential cul-de-sac street with the popular open space park at the end of the street as well as easy access to a selection of independent shops, cafés, bakeries, wine bars, and restaurants in trendy Stroud Green. The green open spaces of Finsbury Park are nearby, with Finsbury Park station only a short walk away.

Features

- One Double Bedroom
- Period Conversion
- Private terrace
- Share of Freehold
- Open plan
- Excellent Transport Links

Wray Crescent, London, N4



Total area (approx): 40.36 sq m (434 sq. ft)

Terrace total area (approx): 6.60 sq m (71 sq. ft)