



## Tiltman Place, N7

£550,000

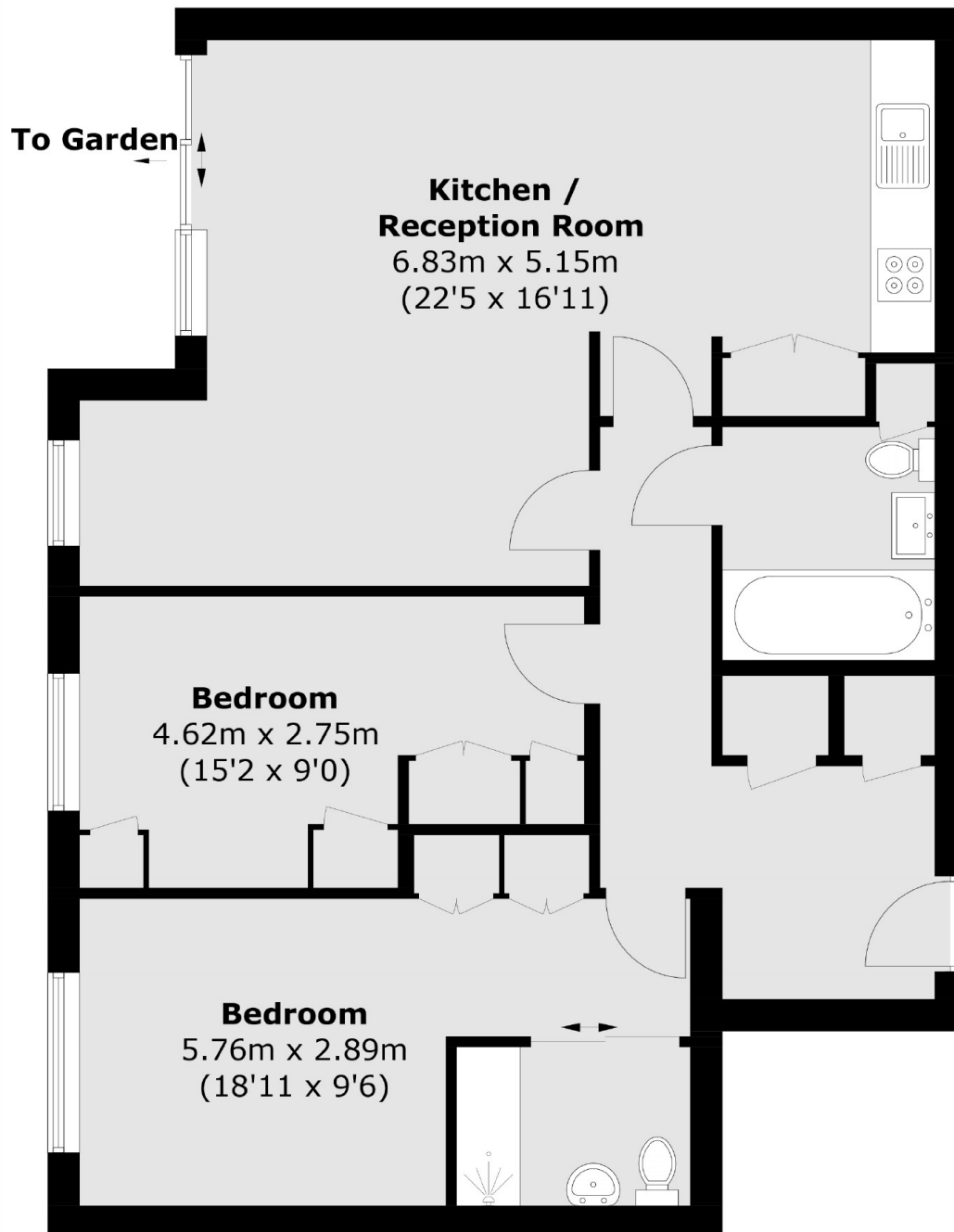
Forming part of a historic development converted from the old Hornsey Baths, this modern two-double-bedroom apartment offers exceptional living space and modern living. The property benefits from an open-plan kitchen/reception room which opens onto a patio, principal bedroom with en suite, further double bedroom and a family bathroom.

Tiltman Place is well located between Finsbury Park, Archway and Tufnell Park. Offering easy access to a range of supermarkets, restaurants and coffee shops situated along the popular Stroud Green Road and surrounding area. The Victoria & Piccadilly Underground Lines, London Overground, Thameslink and the Great Northern City Line are all accessible from the nearby Finsbury Park station.

### Features

- Two Bedroom
- Modern Development
- 24 Hour Concierge
- Patio Garden
- Leasehold
- Chain Free
- Great Transport Links

# Tiltman Place, London, N7



Total area (approx.): 80.4 sq. m (865.4 sq. ft)

**Dexters**

Finsbury Park  
87 Stroud Green Road  
Finsbury Park  
London  
Sales  
020 7483 6360

Energy Rating: D. We aim to make our particulars both accurate and reliable. However they are not guaranteed; nor do they form part of an offer or contract. If you require clarification on any points then please contact us, especially if you're traveling some distance to view. Please note that appliances and heating systems have not been tested and therefore no warranties can be given as to their good working order.

 **RICS** | Regulated  
Estate Agent  
and Letting Agent

dexters.co.uk