

## Medina Road, N7

£634 Per week

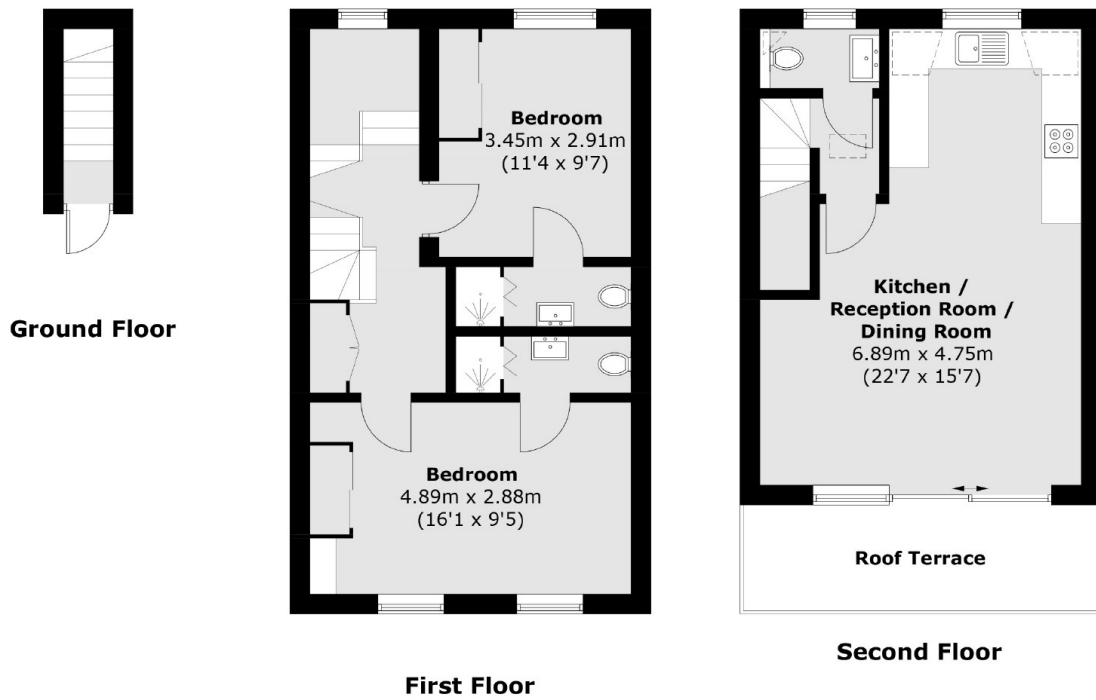
A brand new property on Medina Road. This property is split over the top two floors, it comes with two double bedrooms, two bathrooms and an open plan reception area that leads to a private terrace. The property is available furnished or unfurnished.

Medina Road is located close to Finsbury Park Station as well as Seven Sisters Road where you will find a selection of shops, restaurant's and cafés.

### Features

- Brand New Flat
- Two Bedrooms
- Two Bathrooms
- Wooden Floors Throughout
- Open Plan Reception
- Private Terrace

Medina Road,  
London, N7



Total area (approx.): 77.3 sq. m (832.0 sq. ft)  
Roof Terrace area (approx.): 8.6 sq. m (92.6 sq. ft)