



## Crouch Hill, N4

£350,000

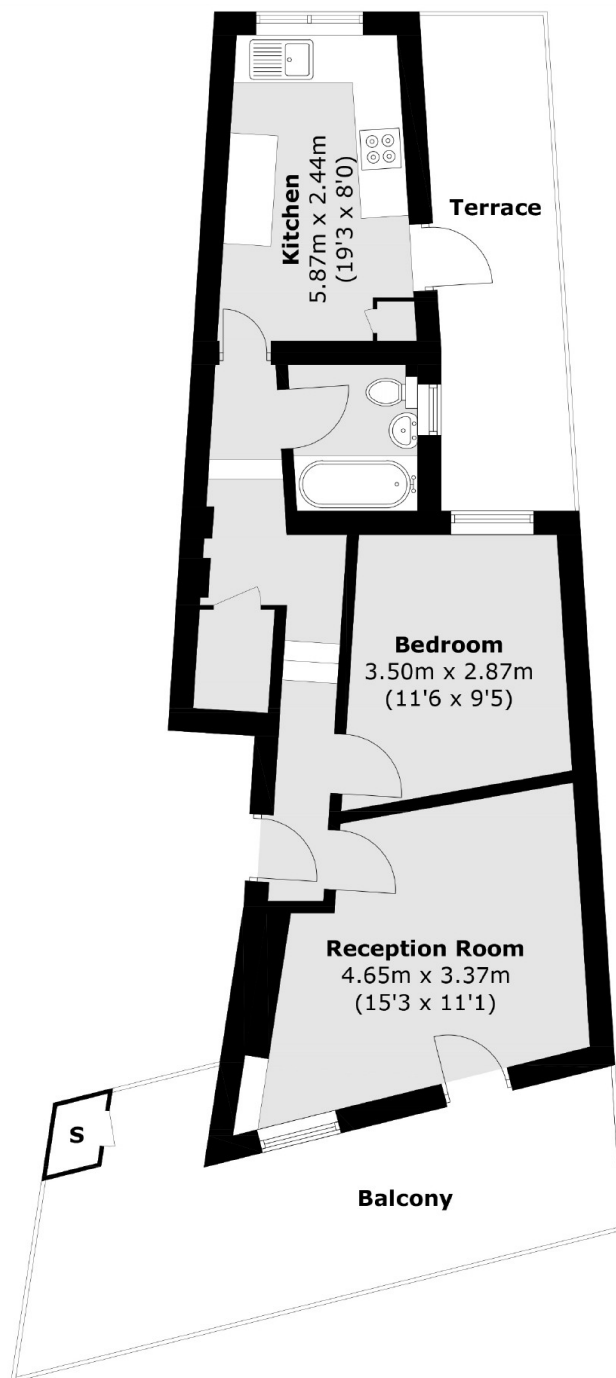
At nearly 500 sq.ft this one bedroom property is in need of refurbishment. This flat has its own front door, separate reception room and kitchen as well as a private terrace.

Easy access to the Parkland Walk and the wonderful selection of shops and cafés of both Crouch End and Stroud Green. Crouch Hill Overground Station sits adjacent to the property whilst Finsbury Park Underground (Piccadilly & Victoria Lines) is within easy walking distance.

### Features

- One Bedroom
- In Need Of Refurbishment
- Leasehold
- Great Transport Links
- Good Location
- Chain Free

# Crouch Hill, London, N4



Total area (approx.): 45.0 sq. m (484.4 sq. ft)  
Store (approx.): 5.5 sq. m (59.2 sq. ft)  
Terrace & Balcony: 27.1 sq. m (221.7 sq. ft)