



Manor Gardens, N7

£576 Per week

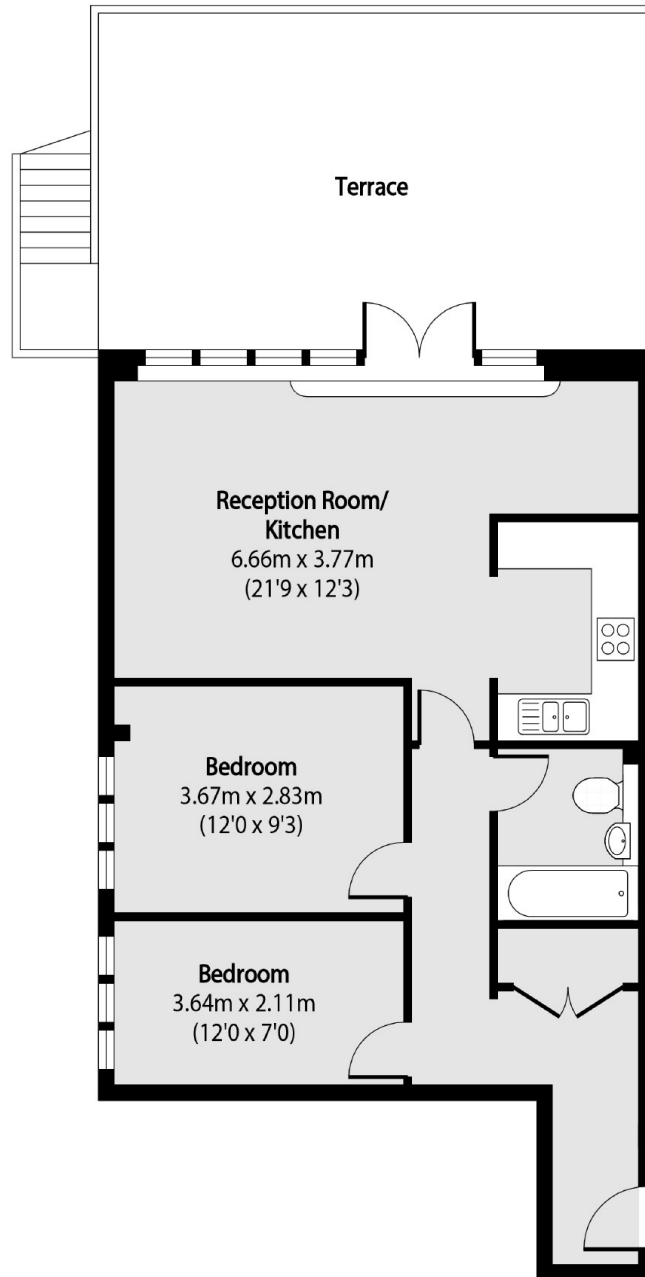
A two double bedroom apartment in a popular iconic Art Deco building. The property has two double bedrooms, a spacious living area and a large private roof terrace. The development benefits from a resident's gym, communal patios and 24 hour concierge.

The Beaux Arts Building also offers three communal gardens, multiple roof terraces with views across London and is within a mile of Holloway Road station, Finsbury Park station, Archway station and Upper Holloway overground station.

Features

- Two Bedrooms
- Private Roof Terrace
- Unfurnished
- 24 Hour Concierge
- Communal Gym & Sauna
- Great Location

Manor Gardens, London, N7



Total area (approx): 62.83 sq m (676 sq. ft)

Terrace total area (approx): 29.67 sq m (319 sq. ft)