



Tollington Park, N4

£784 Per week

A three bedroom property in a period mansion block. The three bedrooms are all doubles, it has a good sized living area and a separate kitchen. The property also benefits from a private garden.

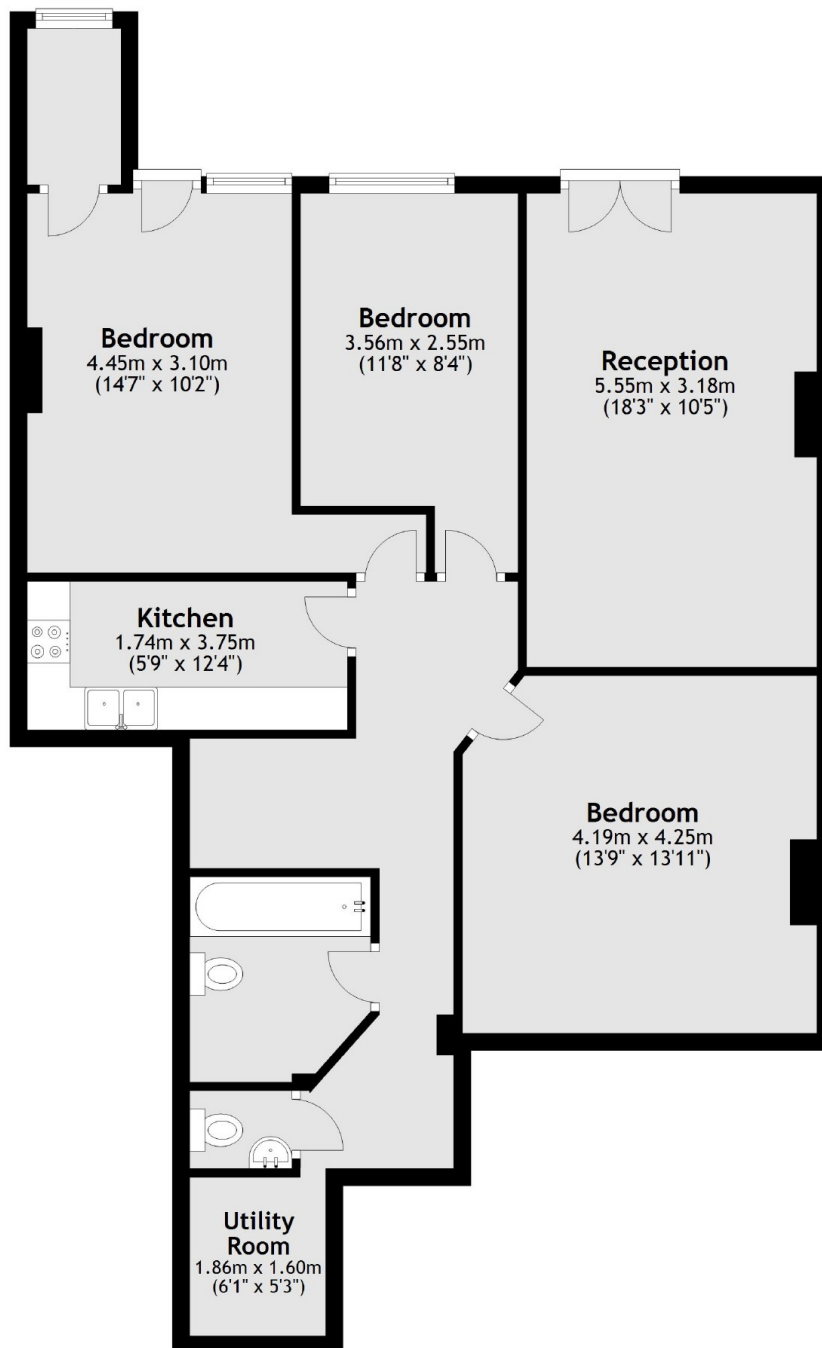
Located on Tollington Park and within easy reach of the local shops and cafes on both Stroud Green and Hornsey Road. Finsbury Park underground station is a short distance away for access to Victoria, Piccadilly and mainline services.

Features

- Three Double Bedrooms
- Private Garden
- Wooden Floors Throughout
- Period Mansion Block
- Great Location
- Great Transport Links

Tollington Park, London, N4

Ground Floor



Total area: approx. 94.4 sq. metres (1016.2 sq. feet)