



## Tollington Park, N4

£650,000

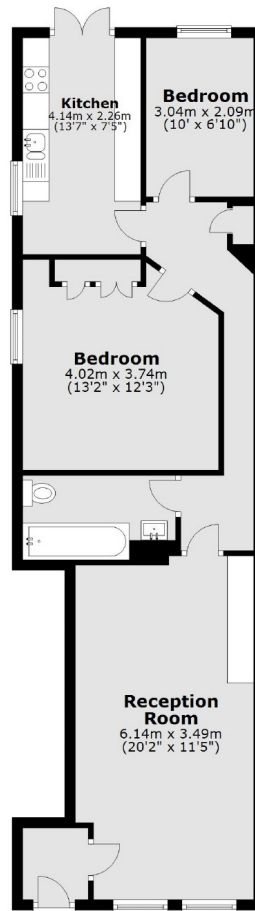
A delightful, well-presented two bedroom garden flat. This property features a bright reception room, modern fitted separate kitchen leading onto a Southeast facing garden, family bathroom, private entrance and has ample storage.

Tollington Park is perfectly positioned close to Finsbury Park station and the great selection of shops, bars, restaurants and cafés that the Finsbury Park and Stroud Green areas have to offer.

### Features

- Two Bedroom
- Separate Kitchen
- Private Garden
- Victorian Conversion
- Leasehold
- Great Transport Links

# Tollington Park, London, N4



Total area: approx. 67.5 sq. metres (726.3 sq. feet)