



Finsbury Park Road, N4

£675,000

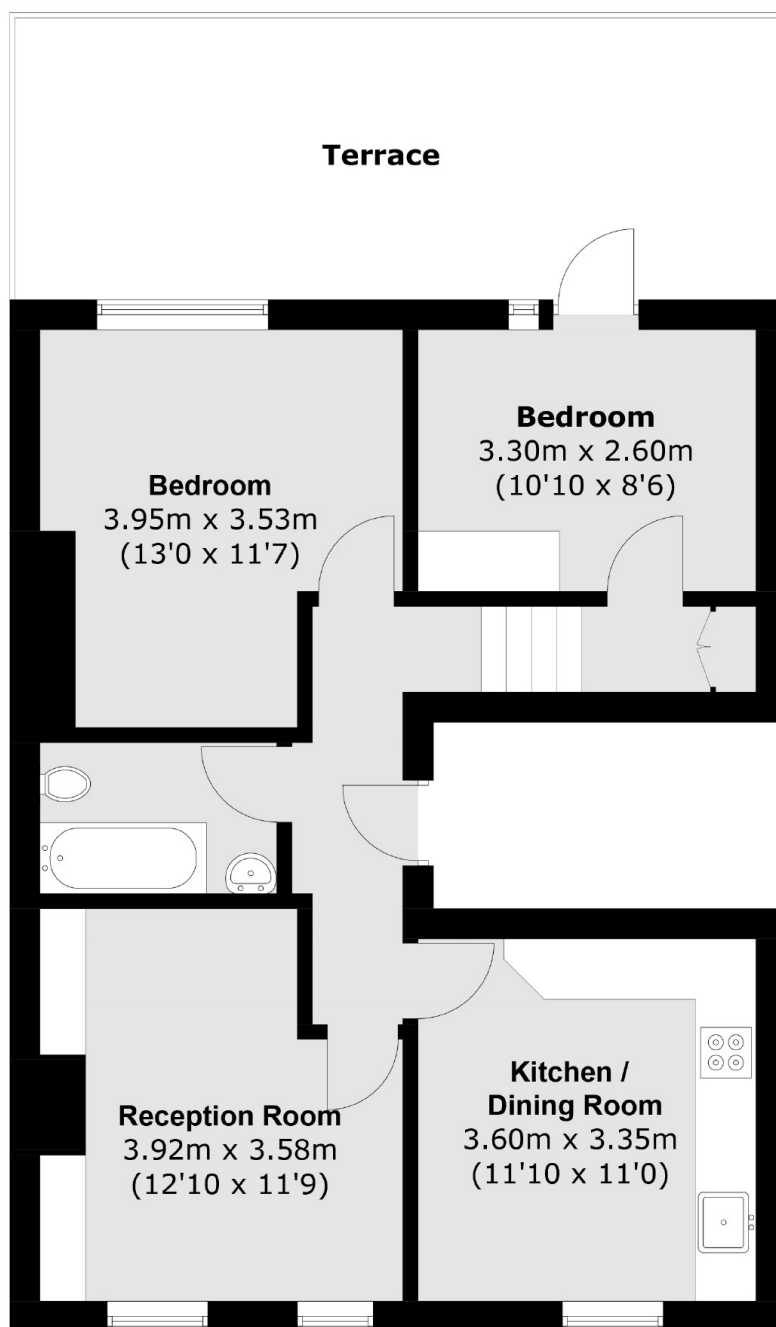
An extremely well presented two double bedroom first floor flat measuring in excess of 600 sq.ft. The property has a large South facing terrace and benefits from having the Share of Freehold.

Finsbury Park Road is well-located for access to Finsbury Park station (Piccadilly line, Victoria line and National Rail) and is also close to an array of nearby independent shops, bars, restaurants, coffee shops and shopping facilities. The green open spaces of Finsbury Park are also close by.

Features

- Two Bedroom
- First Floor Flat
- South Facing Terrace
- Share of Freehold
- Good Location
- Great Transport Links

Finsbury Park Road, London, N4



First Floor

Total area (approx.): 60.2 sq. m (647.9 sq. ft)
Terrace area (approx.): 22.3 sq. m (229.2 sq. ft)