



Cornwall Road, N15

£360,000

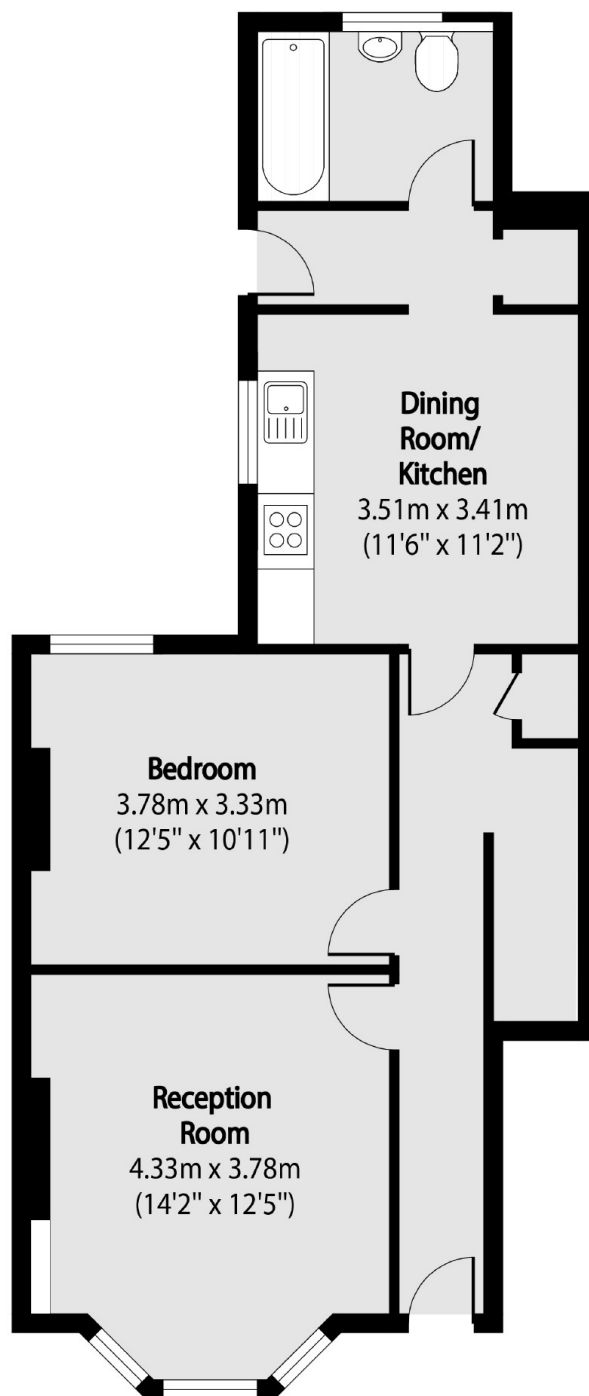
A one bedroom garden flat in a converted Victorian house which is in need of modernisation. The property offers a separate kitchen and reception, a contemporary bathroom and a private rear garden.

It is located on a quiet residential street and close to Turnpike Lane Station, Harringay Green Lanes Station and Seven Sisters Station. It is also close to the popular open green spaces of Downhills Park and within the catchment for Seven Sisters Primary School.

Features

- One Bedroom
- Leasehold
- Private Garden
- Period Conversion
- Good transport links
- Unmodernised

Cornwall Road, London, N15



Total area (approx): 59.38 sq m (639 sq. ft)