



Isledon Road, N7

£600,000

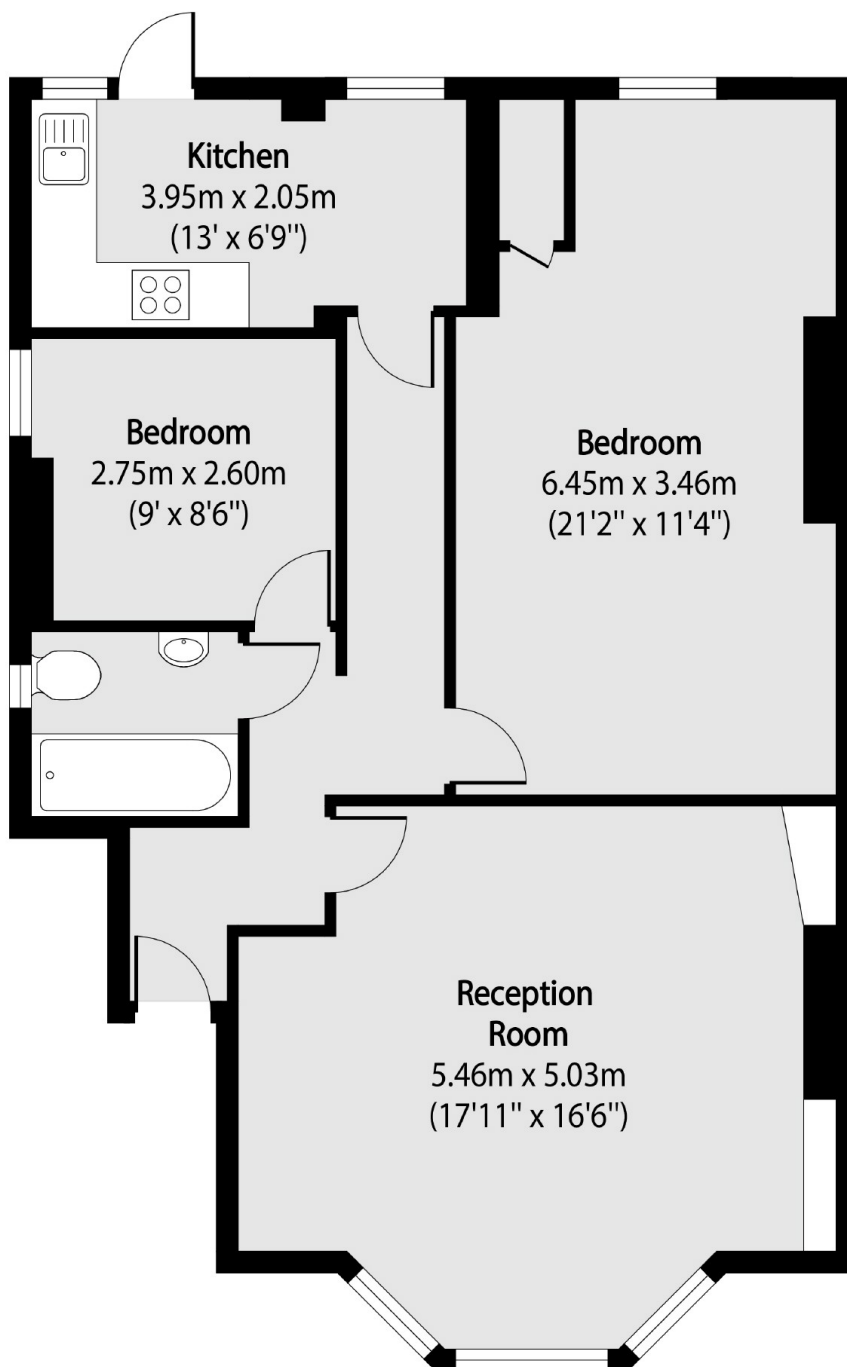
An unmodernised two bedroom flat set within a Victorian terrace. This second floor flat has a large reception room, and separate kitchen and offers a great opportunity to create a bespoke flat while adding significant value.

Isledon Road is well located for access to Finsbury Park station (Piccadilly and Victoria lines, Great Northern and Thameslink) and is also close to numerous local shops, parks and a leisure centre.

Features

- Two Bedrooms
- Large Reception Room
- Unmodernised
- Second Floor Flat
- Period Conversion
- Great Transport Links

Isledon Road, London, N7



Total area (approx): 74.79 sq m (805 sq. ft)