



Coster Avenue, N4

£400,000

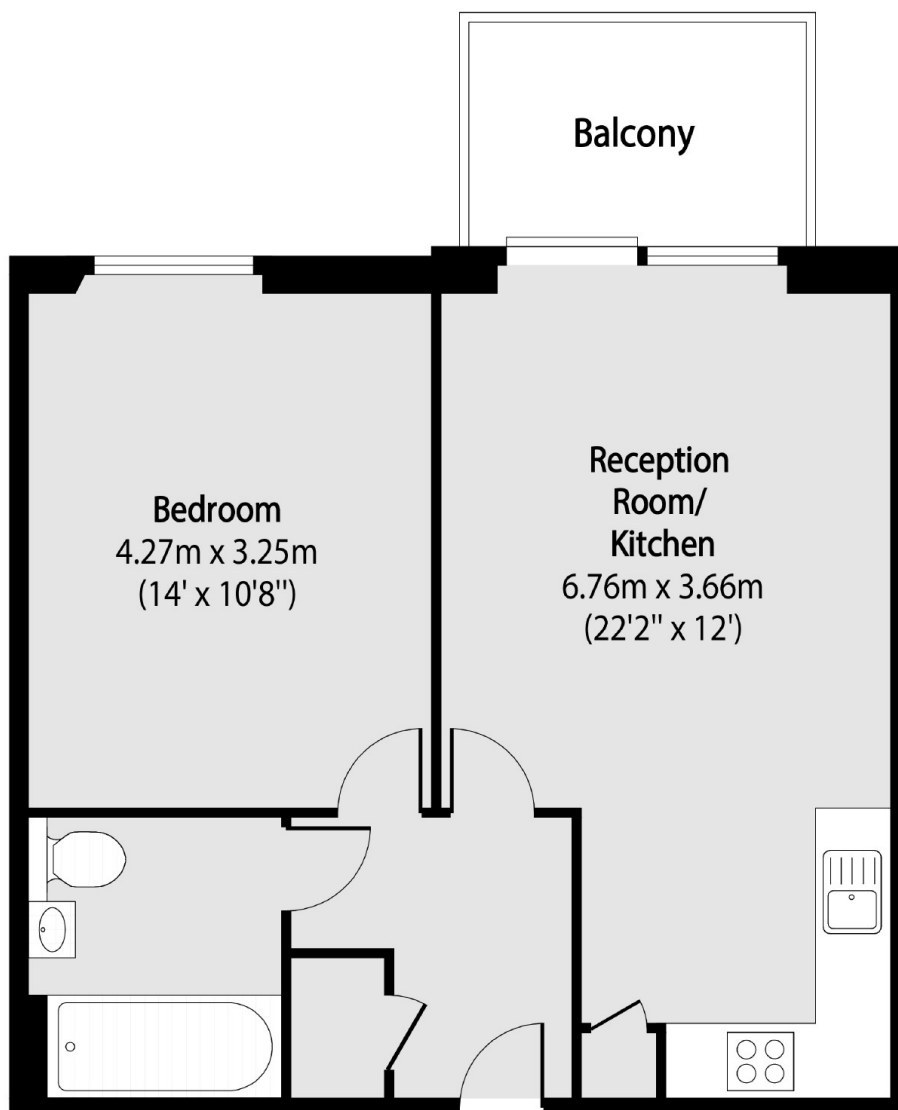
This well presented one bedroom flat situated in this popular development is being offered to the market chain free. Spanning over 500 sqft. The property has floor-to-ceiling windows, a fully fitted open-plan kitchen reception, a smart modern bathroom suite, ample storage and a private balcony.

Mulberry Apartments forms part of the sought-after, luxury Woodberry Down Development offering easy access to the Piccadilly Line via Manor House Station and Finsbury Park Station. A vast array of shops, cafés and restaurants are located along nearby and as well as the green open spaces of both Clissold Park and Finsbury Park.

Features

- One Bedroom
- Open Plan
- Private Balcony
- Excellent Transport Links
- Chain Free
- Luxury Development

Coster Avenue, London, N4



Total area (approx): 46.91 sq m (505 sq. ft)

Balcony total area (approx): 5.02 sq m (54 sq. ft)