

## Hanley Road, N4

£699,000

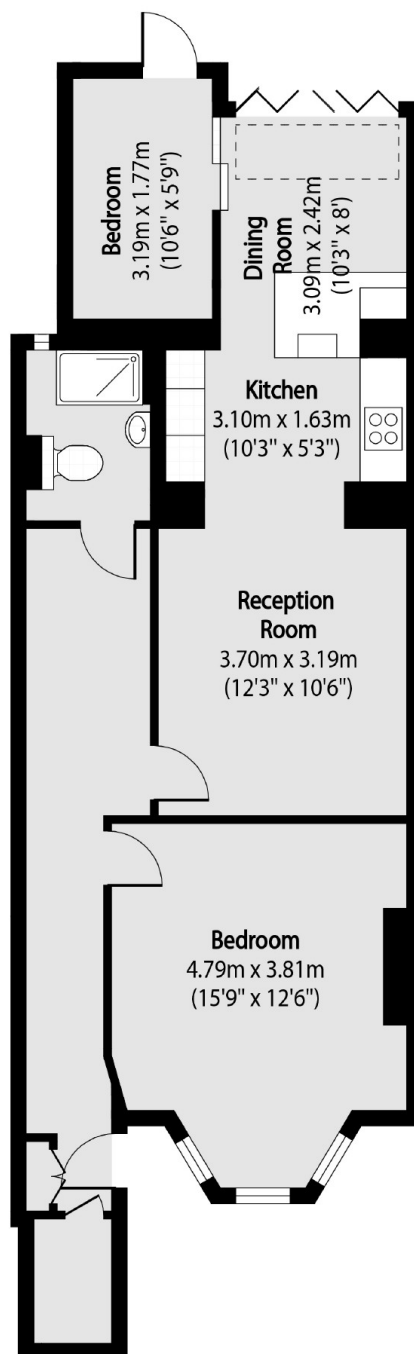
This immaculately presented two bedroom flat, situated within a period conversion, includes a fully fitted open-plan kitchen reception which leads out onto a private garden.

Hanley Road is perfectly positioned for the borders of Crouch End and Stroud Green, offering access to nearby transport links and amenities of Crouch End and Crouch Hill, Stroud Green and Finsbury Park. The shops, bars, restaurants and coffee shops are also within easy reach of the flat.

### Features

- Immaculate Condition
- Two Bedrooms
- Private Garden
- Share Of Freehold
- Great Transport Links
- Private Entrance

# Hanley Road, London, N4



Total area (approx): 66.65 sq m (717 sq. ft)