



Nelson Road, N8

£550,000

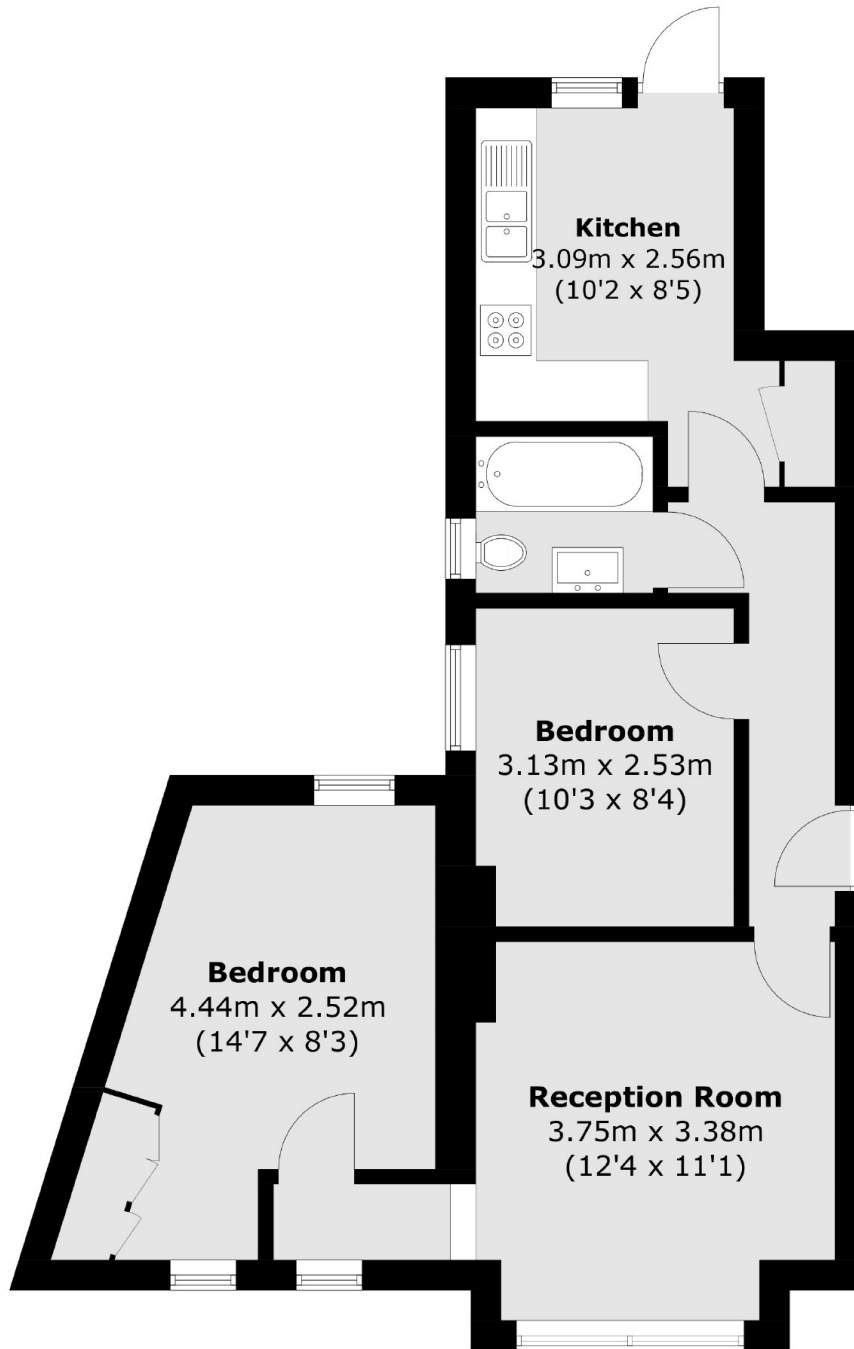
Offered in great condition throughout is this two bedroom flat situated on the ground floor of a Victorian conversion. In addition to the two double bedrooms the flat offers a separate reception room, a bathroom and a kitchen which leads on to a large private garden.

Nelson Road is a quiet residential street with access to multiple transport links including the tube and train lines. Both Weston Park Primary and St Aidan's School are within a short distance as well as the shopping facilities found at Crouch End Broadway and Stroud Green.

Features

- Two Bedrooms
- Share of Freehold
- Private Garden
- Desirable Location
- Separate Kitchen
- Private Front Garden

Nelson Road, London, N8



Total area (approx.): 55.5 sq. m (597.4 sq. ft)