



Woodstock Road, N4

£500,000

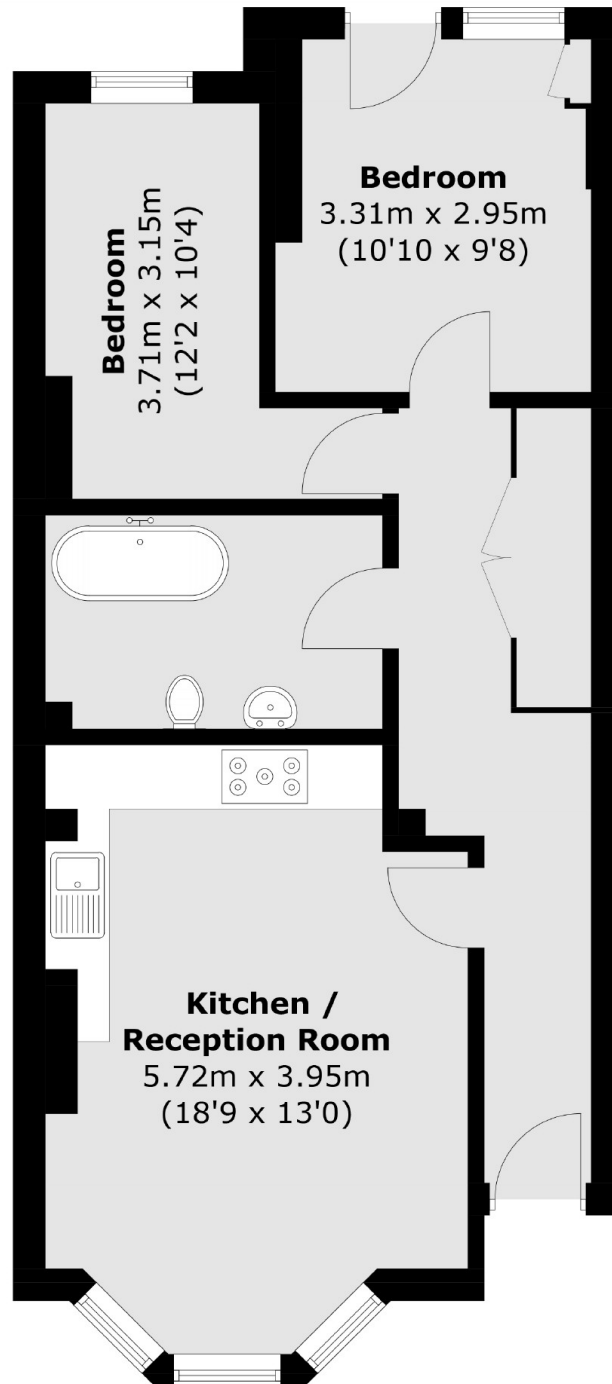
Situated on the lower ground floor of a converted Victorian building is this two double bedroom garden flat in the heart of Stroud Green. Presented in good decorative order throughout, the property features an open plan kitchen reception area, excellent storage solutions and a large private rear garden.

Woodstock Road is a quiet, residential turning, perfectly positioned close to Finsbury Park station (Great Northern, Thameslink, Victoria and Piccadilly lines) as well a plethora of independent shops, bars, pubs, restaurants and cafés. This property is also located minutes away from the popular Parkland Walk Nature Reserve.

Features

- Period Conversion
- Two Bedrooms
- Open Plan Kitchen
- Private Garden
- Chain Free
- Excellent Transport Links

Woodstock Road, London, N4



Total area (approx.): 58.3 sq. m (627.5 sq. ft)