



# Leggett & James

The Vale of Evesham Property Experts



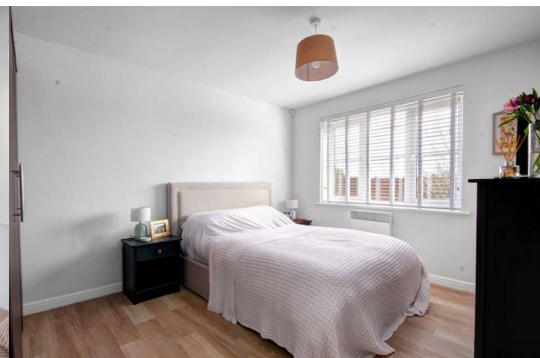
## 1 River House Common Road

, Evesham, WR11 4QY

£850 Per Calendar Month



Charming one bedroom ground floor flat with open plan living and undercover allocated parking.  
Council Tax Band B. EPC Rating C. Deposit required £950.



Entrance Hall

having an electric heater and a door to:

Living Area 17'2 x 14'10 (5.23m x 4.52m)

with a double glazed window to the side, double glazed French doors to the front, two electric heaters, television point and telephone point.

Kitchen

having a range of fitted wall and base units, sink with drainer and mixer tap, tiled splashback, space and plumbing for a washing machine, electric hob, electric oven and filter hood.

Bedroom 12'7 x 10'0 (3.84m x 3.05m)

with a double glazed window to the front, television point and electric heater.

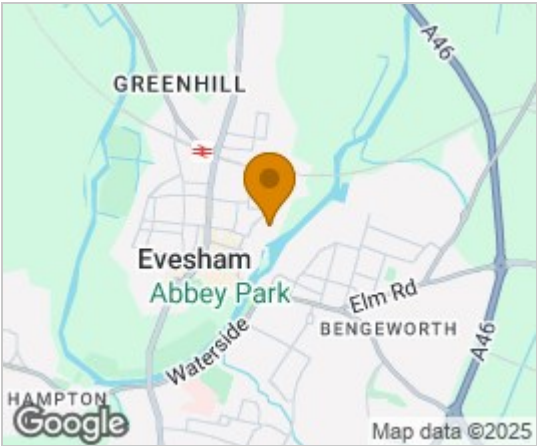
Bathroom 8'0 x 6'3 (2.44m x 1.91m)

having a white suite comprising of low level WC, pedestal wash hand basin in vanity, panel bath with shower over, heated towel rail and extractor fan.

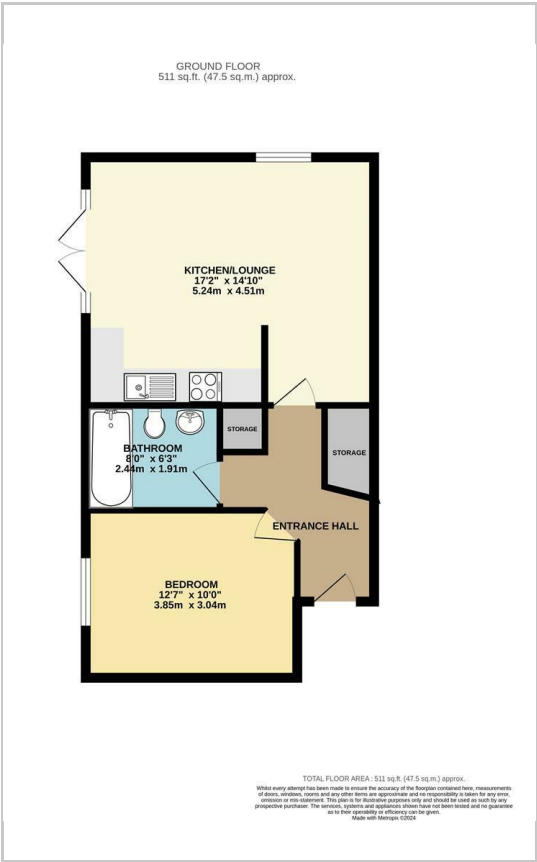
Outside

Undercover allocated parking space.

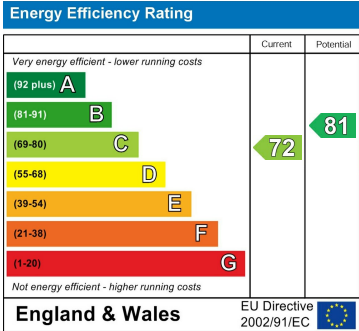
Area Map



Floor Plans



Energy Efficiency Graph



These particulars, whilst believed to be accurate are set out as a general outline only for guidance and do not constitute any part of an offer or contract. Intending purchasers should not rely on them as statements of representation of fact, but must satisfy themselves by inspection or otherwise as to their accuracy. No person in this firms employment has the authority to make or give any representation or warranty in respect of the property.