



Leggett & James

The Vale of Evesham Property Experts



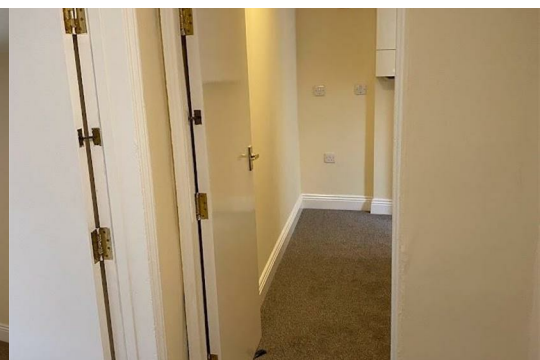
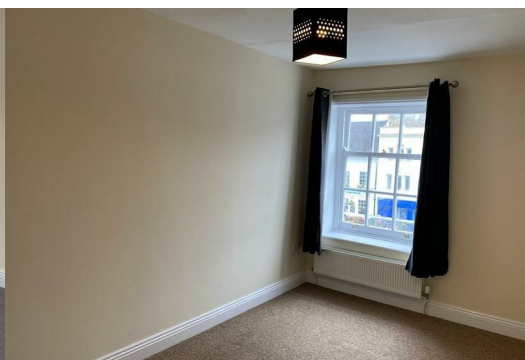
53 High Street

Evesham, Worcestershire, WR11 4DA

£725 PCM



One bedroomed second floor flat in the High Street, Evesham with allocated off road parking to rear. Council Tax Band A, EPC rating D. Deposit required £825.00. NO CHILDREN OR PETS ALLOWED



Hallway

Living Room

with sash windows to front

Kitchen

with electric oven and 4 ring gas hob and extractor hood over. Space and plumbing for washing machine. Space for fridge

Bedroom

Double bedroom with sash window to front

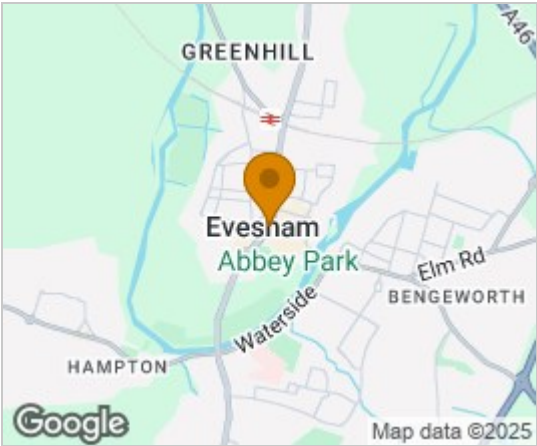
Bathroom

with white suite comprising panel bath with shower over, low flush WC and wash hand basin.

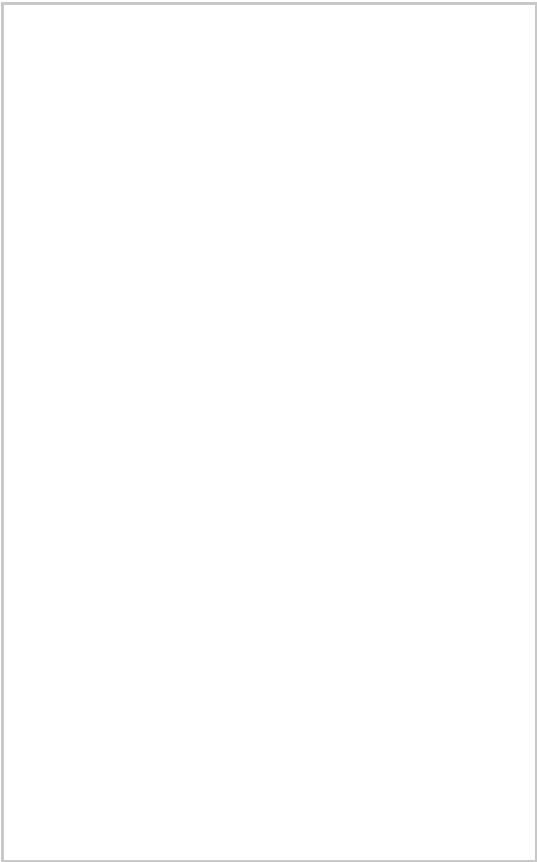
Outside

Car park to rear of No 57 with allocated parking space.

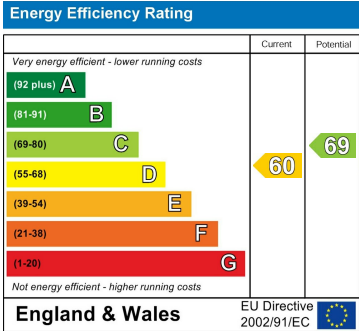
Area Map



Floor Plans



Energy Efficiency Graph



These particulars, whilst believed to be accurate are set out as a general outline only for guidance and do not constitute any part of an offer or contract. Intending purchasers should not rely on them as statements of representation of fact, but must satisfy themselves by inspection or otherwise as to their accuracy. No person in this firms employment has the authority to make or give any representation or warranty in respect of the property.