



Leggett & James

The Vale of Evesham Property Experts



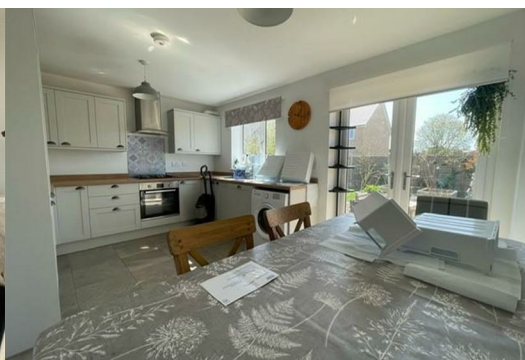
25a Withy Trees Road

South Littleton, Evesham, WR11 8YA

£1,200 Per Calendar Month



A recently built 2/3 bedroom semi detached house in the village of South Littleton. The property is in very good order and there are some items of furniture. Viewing recommended. EPC Rating B. Council Tax Band C. Deposit Required £1300.00.



Hall

with stairs to first floor. On the landing there are two cupboards. Door into

Cloakroom

with white suite comprising, low flush WC and wash hand basin.

Living Room

With window to front. Understairs storage cupboard. Any furniture left will not be replaced or repaired by the owner, including the TV. Door to

Kitchen Breakfast Room

With a range of fitted drawer and cupboard base units with matching wall cabinets over. Integrated fridge freezer, dishwasher. Washing machine (will not be replaced or repaired by the owner if it breaks down). Built in oven with 4 ring hob over and extractor hood. Table and chairs. French doors opening onto Garden.

Bedroom One

with window. A range of bedroom furniture and TV (conditions as before)
Door to

En-Suite Shower Room

With white suite comprising low flush WC, pedestal wash hand basin and enclosed shower cubicle.

Bedroom Two

with window. A range of bedroom furniture (conditions as before)

Bedroom Three/Office

A single bedroom with window. Fitted worksurface which could be used as a desk. This can be removed if required.

Family Bathroom

With white suite comprising panelled bath with shower and screen, pedestal wash hand basin and low flush WC. Electric towel rail.

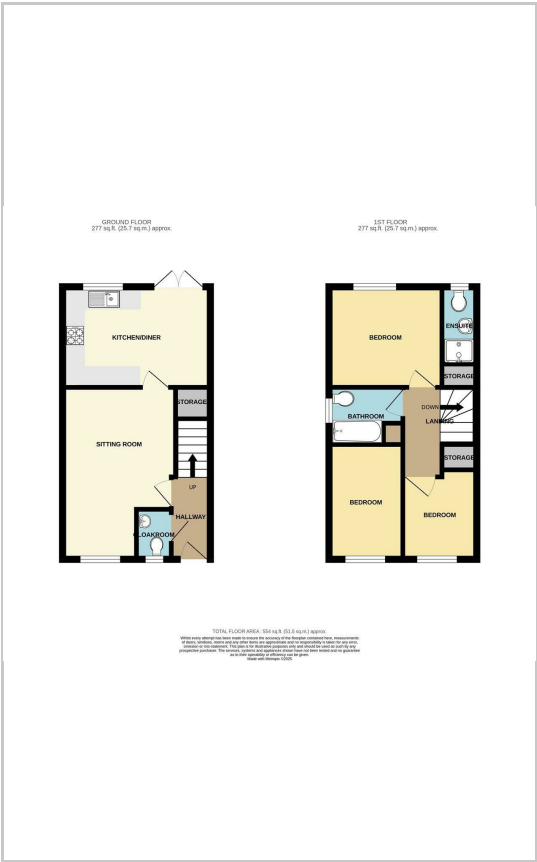
Rear Garden

With patio area, gravelled area with raised beds and lawned area. Parking to front.

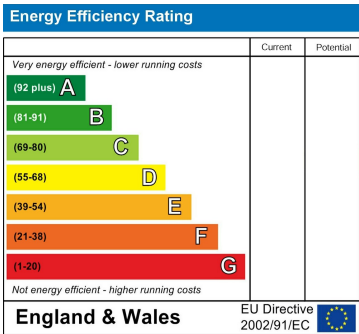
Area Map



Floor Plans



Energy Efficiency Graph



These particulars, whilst believed to be accurate are set out as a general outline only for guidance and do not constitute any part of an offer or contract. Intending purchasers should not rely on them as statements of representation of fact, but must satisfy themselves by inspection or otherwise as to their accuracy. No person in this firms employment has the authority to make or give any representation or warranty in respect of the property.