



Leggett & James

The Vale of Evesham Property Experts



2 Seward Close

Badsey, Evesham, WR11 7FW

Asking Price £379,950



A beautifully presented, well-proportioned family home nestled in the ever-sought-after village of Badsey.



An obscure double glazed door opens to:

Entrance Hall

having a panel radiator and stairs leading to the first floor.

Cloakroom

with an obscure double glazed window to the side, pedestal wash hand basin and a panel radiator.

Sitting Room

having two double glazed window to the front, panel radiator, television point and a woodburner feature fire.

Kitchen

with a glazed stable door to the rear, a double glazed window to the front and rear and double glazed French doors to the rear. The kitchen is fitted with a range of wall and base units with work surfaces over, a one and a half bowl with drainer and mixer tap, tiled splashback, integral dishwasher, space for a fridge freezer, space for a cooker, filter hood and panel radiator.

First Floor Landing

having access to the loft and doors to:

Bedroom One

with a double glazed window to the front, television point, panel radiator and fitted wardrobes. Door to the En Suite: having a double glazed Velux window to the rear, heated towel rail, shower cubicle, low level WC, pedestal wash hand basin in vanity and spotlights.

Bedroom Two

having a double glazed window to the rear and a panel radiator.

Bedroom Three

with a double glazed window to the front and a panel radiator.

Bathroom

having an obscure double glazed window to the side and rear, heated towel rail, extractor fan and a white suite comprising a low level WC, pedestal wash hand basin in vanity, spotlights, panel bath and shower cubicle.

Outside

To the front of the property is an area laid to lawn, block paved area providing off road parking, path leading to the front door and side gated access.

The enclosed rear garden benefits from an area laid to lawn, paved patio area, decked area and rear access to the garage.

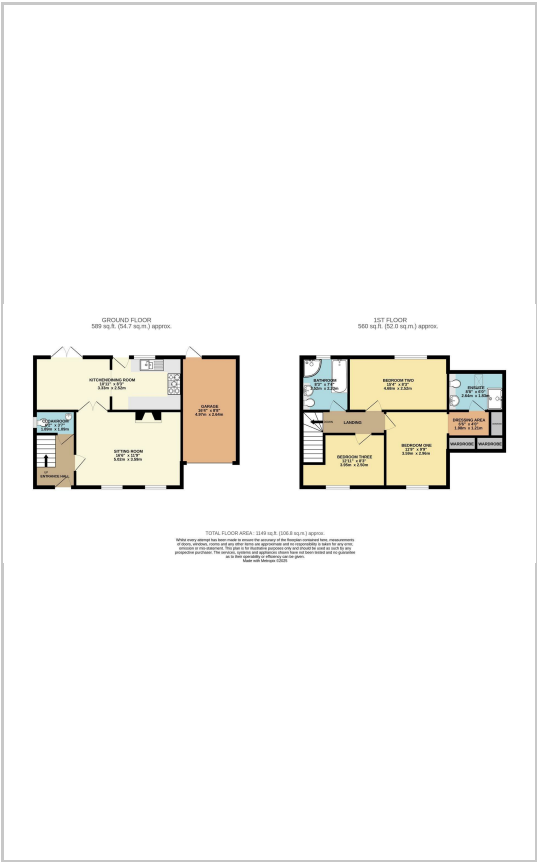
Referrals

We routinely refer to the below companies in connection with our business. It is your decision whether you choose to deal with these. Should you decide to use a company below, referred by Leggett & James Ltd, you should know that Leggett & James Ltd would receive the referral fees as stated. Team Property Services £100 per transaction on completion of sale and £30 of Love2Shop vouchers on completion of sale per transaction.

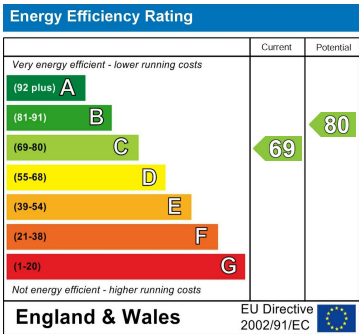
Area Map



Floor Plans



Energy Efficiency Graph



These particulars, whilst believed to be accurate are set out as a general outline only for guidance and do not constitute any part of an offer or contract. Intending purchasers should not rely on them as statements of representation of fact, but must satisfy themselves by inspection or otherwise as to their accuracy. No person in this firms employment has the authority to make or give any representation or warranty in respect of the property.