



Leggett & James

The Vale of Evesham Property Experts



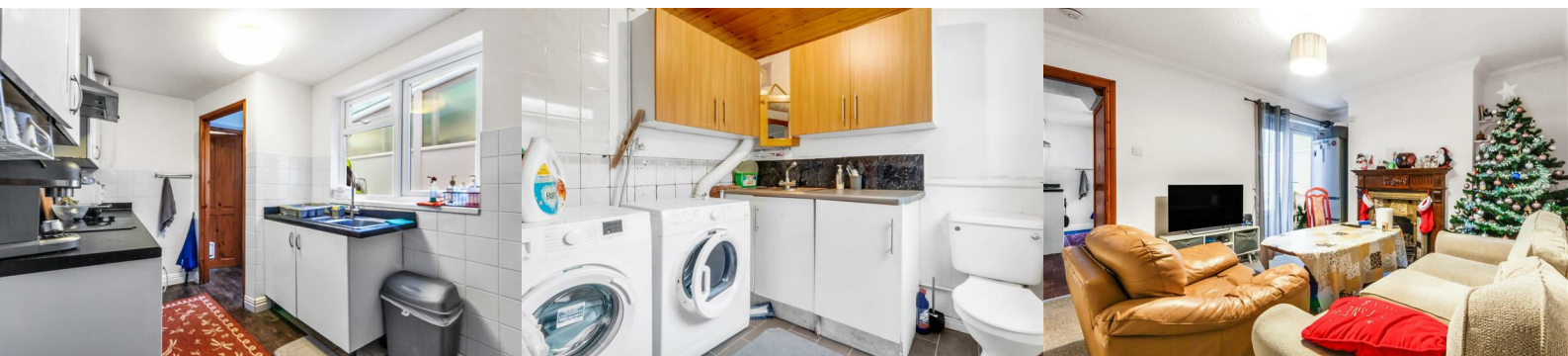
21 Littleworth Street

, Evesham, WR11 4AJ

Asking Price £220,000



Nestled in the heart of Evesham, this period terraced house offers a chance for someone to really put their own mark on it. With its enviable town centre location, any prospective buyer will enjoy the convenience of local shops, cafes, and amenities just a stone's throw away.



Porch

having an obscure double glazed door and opening to:

Entrance Hall

with a glazed door to the front.

WC

having a double glazed window to the side, sink with drawer and heated towel rail.

Sitting Room

with double glazed French doors to the rear, panel radiator, television point and feature fire.,

Kitchen

having a double glazed window to the side, the kitchen is fitted with a range of wall and base units with work surfaces over, one and a half bowl sink with drainer and mixer tap, electric oven, induction hob and filter hood.

Utility

with a double glazed window to the side, WC, heated towel rail, a range of wall and base units, work surface and sink with drainer.

Dining Room

having a double glazed bay window to the front and a panel radiator.

First Floor Landing

with a double glazed window to the side, access to the loft and skylight.

Bedroom One

having a double glazed window to the front and a panel radiator.

Bedroom Two

with a double glazed window to the rear and a panel radiator.

Bedroom Three

having a double glazed window to the rear and a panel radiator.

Bathroom

with an obscure double glazed window to the front, heated towel rail, low level WC and a corner bath.

Outside

There is a front garden with a path up to the front door. Rear courtyard & access to the carport, which has steps up to the studio area.

Referrals

We routinely refer to the below companies in connection with our business. It is your decision whether you choose to deal with these. Should you decide to use a company below, referred by Leggett & James Ltd, you should know that Leggett & James Ltd would receive the referral fees as stated. Team Property Services £100 per transaction on completion of sale and £30 of Love2Shop vouchers on completion of sale per transaction.

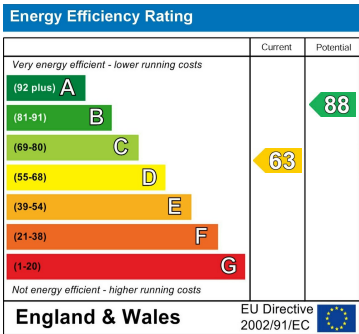
Area Map



Floor Plans



Energy Efficiency Graph



These particulars, whilst believed to be accurate are set out as a general outline only for guidance and do not constitute any part of an offer or contract. Intending purchasers should not rely on them as statements of representation of fact, but must satisfy themselves by inspection or otherwise as to their accuracy. No person in this firms employment has the authority to make or give any representation or warranty in respect of the property.