



Leggett & James

The Vale of Evesham Property Experts



29 Tithe Court

Middle Littleton, Evesham, WR11 8LR

Asking Price £150,000



Set in the village of Middle Littleton, this two bedroom ground floor maisonette makes the perfect affordable first home, downsize or buy to let.

The property enjoys allocated parking and its own enclosed rear garden. There is no onward chain and this opportunity is best appreciated when viewed.

AGENTS NOTE: The lease has been extended by the current owners. The new term of the Lease is 189 years from and including 29 September 1982.



An obscure double glazed door opens to:

Entrance Hall

having a built in storage cupboard, panel radiator, a linen cupboard with shelving and a radiator. Doors lead off to:

Living Room 17'11 x 10'7 (5.46m x 3.23m)

with a double glazed window to the front, a panel radiator, TV aerial point and a wall mounted gas fire. An archway opens to:

Kitchen 8'8 x 8'3 (2.64m x 2.51m)

having two double glazed windows to the front, a ceramic tiled floor and a wall mounted Baxi gas combination boiler. The kitchen has a range of fitted cupboards, drawers and work surfaces, single drainer sink unit, a cooker point and plumbing for a washing machine.

Bedroom One 11'2 x 9'5 (3.40m x 2.87m)

with a double glazed sliding door to the rear garden, a telephone point, panel radiator and a fitted double wardrobe.

Bedroom Two 10'4 x 6'9 (3.15m x 2.06m)

having a double glazed window to the rear and a panel radiator.

Bathroom

with an obscure double glazed window, panel radiator and a white suite comprising a low level WC, pedestal wash basin and a panel bath with tiled surround and a wall mounted electric shower.

Outside

The property enjoys a rear garden which is enclosed by wood panel fencing. There is an area of grass and a timber built deck, along with a useful timber built summer house. There is also allocated parking found near by.

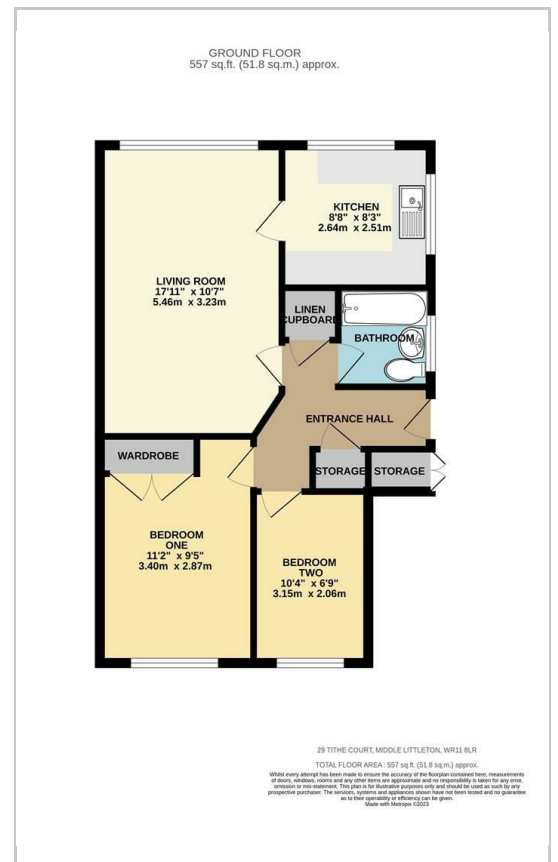
Referrals

We routinely refer to the below companies in connection with our business. It is your decision whether you choose to deal with these. Should you decide to use a company below, referred by Leggett & James Ltd, you should know that Leggett & James Ltd would receive the referral fees as stated. Team Property Services £100 per transaction on completion of sale and £30 of Love2Shop vouchers on completion of sale per transaction.

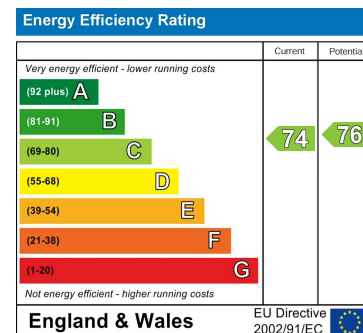
Area Map



Floor Plans



Energy Efficiency Graph



These particulars, whilst believed to be accurate are set out as a general outline only for guidance and do not constitute any part of an offer or contract. Intending purchasers should not rely on them as statements of representation of fact, but must satisfy themselves by inspection or otherwise as to their accuracy. No person in this firm's employment has the authority to make or give any representation or warranty in respect of the property.