



Leggett & James

The Vale of Evesham Property Experts



9 Badsey Road

Evesham, Worcestershire, WR11 3DS

Asking Price £265,000



NO ONWARD CHAIN This three bedroom family home is set on a good sized plot and is being offered with no onward chain. The property benefits from a large ground floor footprint, detached garage to the rear and is well placed within Evesham.



A double glazed front door with a glazed window to the side opens to:

Entrance Hall

having a wood effect floor, panel radiator and stairs to the first floor.

WC

with a double glazed window to the front and low level WC

Sitting Room

having a double glazed bay window to the front, panel radiator, television point and feature fire.

Kitchen

with two double glazed windows to the rear, the kitchen is fitted with a range of wall and base units having works surfaces over, a sink with drainer and mixer tap, tiled splashback, space for a cooker and spotlights.

Utility

having a double glazed window to the front and a glazed door to the rear, space for a fridge freezer and space for a washing machine.

First Floor Landing

with a double glazed window to the side and access to the loft space. Doors to:

Bedroom One

having two double glazed windows to the front, panel radiator and fitted double wardrobe.

Bedroom Two

with a double glazed window to the rear, panel radiator and a fitted wardrobe.

Bedroom Three

having a double glazed window to the rear and a panel radiator.

Bathroom

with an obscure double glazed window to the front, radiator and a white suite comprising of low level WC, pedestal wash hand basin in vanity , panel bath with shower over and a wood floor.

Outside

There are good sized gardens to the front and side of the property which benefit from areas laid to lawn and established shrubs. There is also an enclosed rear garden which has established shrubs and borders, access to the garage and rear gated access.

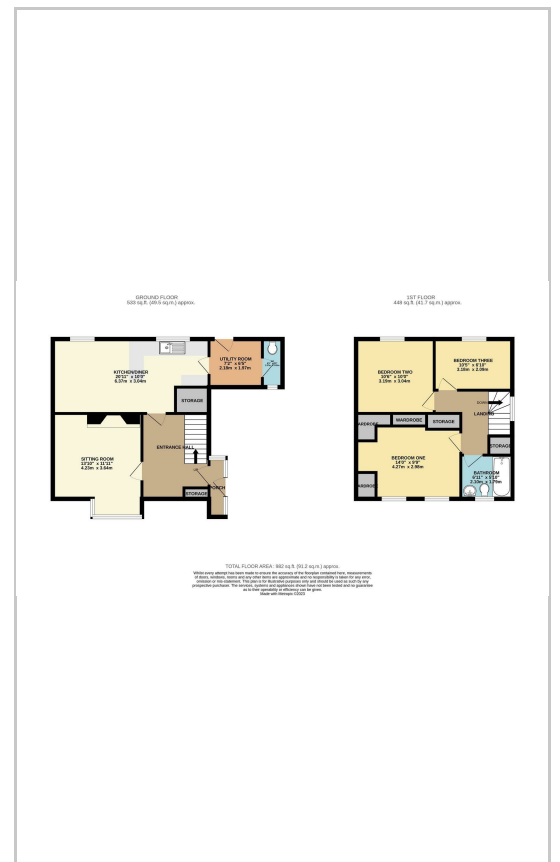
Referrals

We routinely refer to the below companies in connection with our business. It is your decision whether you choose to deal with these. Should you decide to use a company below, referred by Leggett & James Ltd, you should know that Leggett & James Ltd would receive the referral fees as stated. Team Property Services £100 per transaction on completion of sale and £30 of Love2Shop vouchers on completion of sale per transaction.

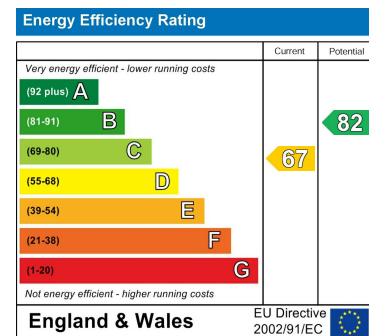
Area Map



Floor Plans



Energy Efficiency Graph



These particulars, whilst believed to be accurate are set out as a general outline only for guidance and do not constitute any part of an offer or contract. Intending purchasers should not rely on them as statements of representation of fact, but must satisfy themselves by inspection or otherwise as to their accuracy. No person in this firm's employment has the authority to make or give any representation or warranty in respect of the property.