



Leggett & James

The Vale of Evesham Property Experts



15 Tithe Court

Middle Littleton, Evesham, WR11 8LR

Asking Price £125,000



*****CASH BUYERS ONLY***** This well-proportioned cluster home is presented in excellent order throughout and enjoys an enviable corner position with its own enclosed garden.

The accommodation briefly comprises a porch, sitting room, kitchen, bedroom and shower room.



Sitting Room 13'9" x 9'11" (4.21 x 3.03)

having a double glazed window to the front, a double glazed window to the side and a panel radiator.

Kitchen 13'9" x 6'5" (4.21 x 1.96)

with a double glazed window to the front, the kitchen is fitted with a range of wall and base units having work surface over, one and a half bowl sink with drainer, mixer tap, tiled splashback, integral dishwasher, integral washing machine, electric cooker hob, electric oven and filter hood.

Landing

having access to the loft and doors to:

Bedroom One 11'6" x 9'11" (3.51 x 3.03)

with a double glazed window to the front, a double glazed window to the side, panel radiator and fitted double wardrobe.

Shower Room 7'1"x 6'5" (2.17x 1.96)

having an obscure double glazed window to the front, heated towel rail and a white suite comprising of low level WC, pedestal wash hand basin, tiled floor, spotlights and shower cubicle.

Outside

The enclosed garden has both patio and gravelled areas and benefits from wide spanning open views to the rear.

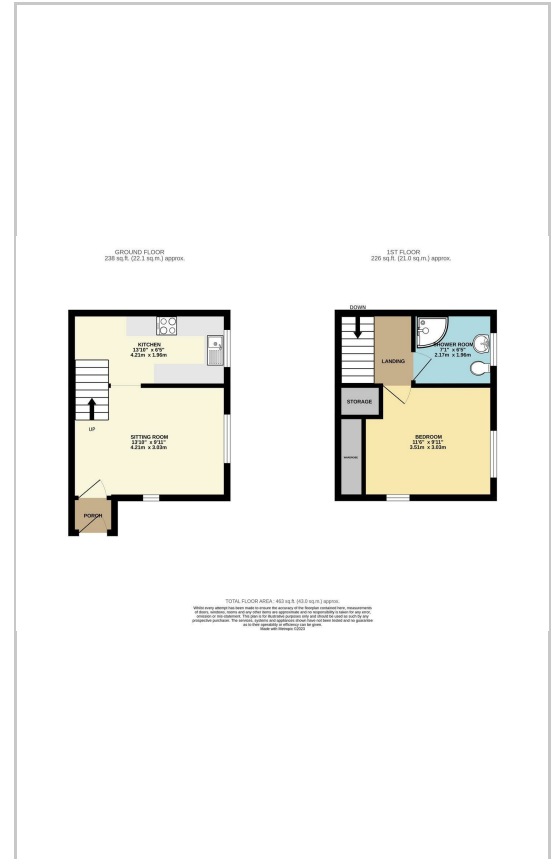
Referrals

We routinely refer to the below companies in connection with our business. It is your decision whether you choose to deal with these. Should you decide to use a company below, referred by Leggett & James Ltd, you should know that Leggett & James Ltd would receive the referral fees as stated. Team Property Services £100 per transaction on completion of sale and £30 of Love2Shop vouchers on completion of sale per transaction.

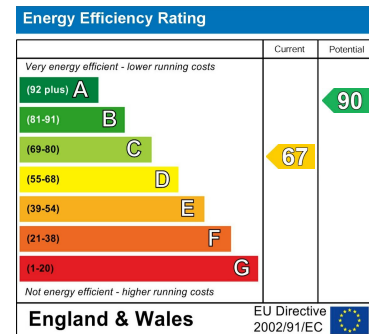
Area Map



Floor Plans



Energy Efficiency Graph



These particulars, whilst believed to be accurate are set out as a general outline only for guidance and do not constitute any part of an offer or contract. Intending purchasers should not rely on them as statements of representation of fact, but must satisfy themselves by inspection or otherwise as to their accuracy. No person in this firm's employment has the authority to make or give any representation or warranty in respect of the property.