



39 Woodsorrel Road, Birkenhead, CH41 0DN Offers In The Region Of £174,950

 4  2  2  D

This mid-terrace house on Woodsorrel Road in Birkenhead! is a delightful property, built in 1910, boasts a generous 1,259 sq ft of living space, perfect for a growing family. With two reception rooms, four bedrooms, and two bathrooms, there is ample space for everyone to enjoy.

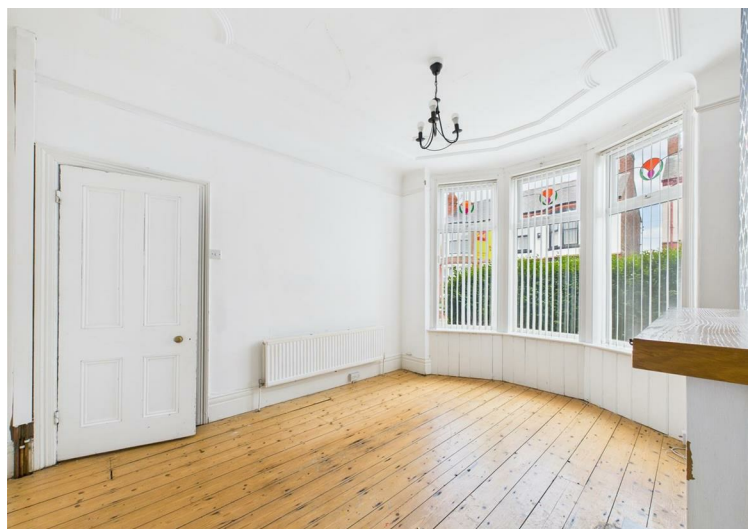
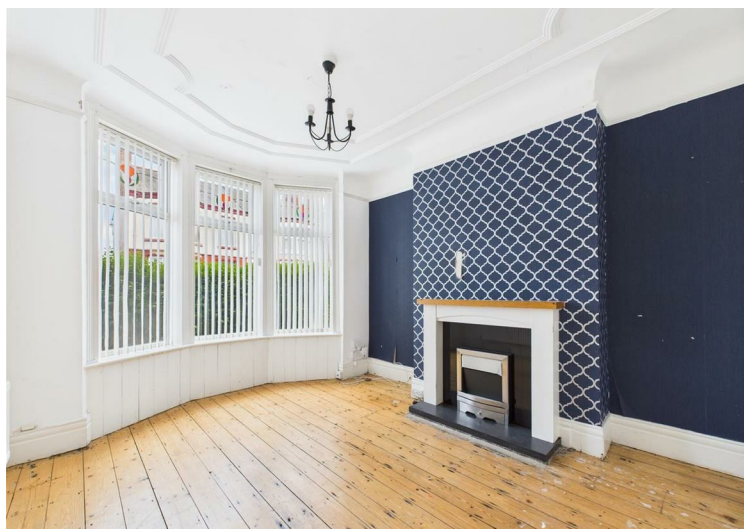
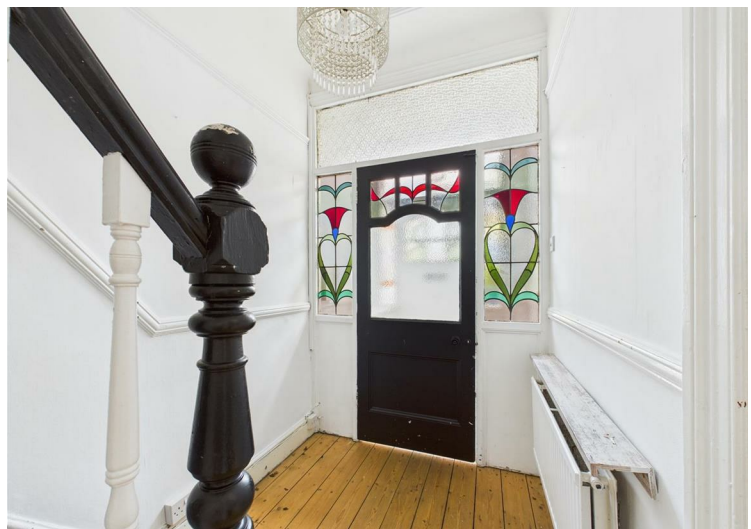
The property features a kitchen, ideal for preparing delicious meals for family and friends. The rear garden offers a lovely outdoor space where you can relax and unwind or entertain guests on sunny days.

Located in Birkenhead, this house provides a peaceful retreat from the hustle and bustle while still being conveniently close to local amenities. With its spacious layout and characterful charm, this home on Woodsorrel Road is sure to capture your heart. Don't miss out on the opportunity to make this wonderful property your own!

- Four Bedrooms
- Mid Terrace Property
- Two Reception Rooms
- kitchen
- Bathroom
- Downstairs Shower Room
- Rear Garden
- Gas Central Heating
- Double Glazing
- EPC Rating D

Viewing

To arrange a viewing on this property or require further information please contact one of our team on 0151 638 6313

A view of the interior of a property, showing a hallway with a wooden floor, a white wall, and a black door. A staircase with a black metal railing and a wooden handrail is visible on the right side of the hallway.

93-95 Wallasey Road, Wallasey, Merseyside, CH44 2AQ
T. 0151 638 6313 | E. sales@bakewellhorner.co.uk
<https://www.bakewellhorner.co.uk/>