



17 The Cliff, Wallasey, CH45 2NW Offers In The Region Of £90,000

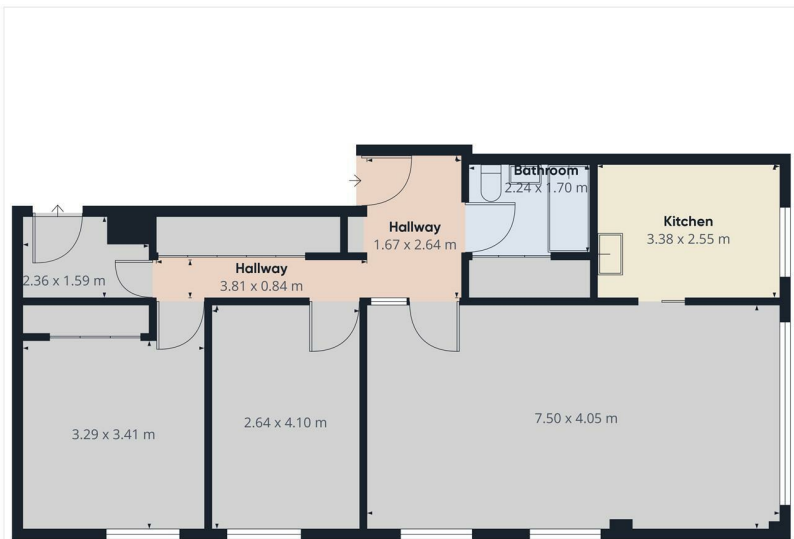


A great opportunity to purchase this purpose built flat that offers superb view across the River. Ideally this property would benefit from some modernising and upgrading throughout however, being sensibly priced this give you the change to put your own style into the property. It has two bedrooms, a lounge and kitchen plus bathroom and small store room. The property is leasehold with management charges



Viewing

To arrange a viewing on this property or require further information please contact one of our team on 0151 638 6313



Approximate total area*
82.48 m²

(1) Excluding balconies and terraces.

While every attempt has been made to ensure accuracy, all measurements are approximate, not to scale. This floor plan is for illustrative purposes only. Calculations are based on RICS IPMS 3C standard.

GIRAFFE360



Energy Efficiency Rating

	Current	Potential
Vary energy efficient - lower running costs		
(92 plus) A		
(81-91) B		
(69-80) C		
(55-68) D		
(39-54) E		
(21-38) F		
(1-20) G		
Not energy efficient - higher running costs		

England & Wales EU Directive 2002/91/EC



These particulars, whilst believed to be accurate are set out as a general outline only for guidance and do not constitute any part of an offer or contract. Intending purchasers should not rely on them as statements of representation of fact, but must satisfy themselves by inspection or otherwise as to their accuracy. No person in this firm's employment has the authority to make or give any representation or warranty in respect of the property.

93-95 Wallasey Road, Wallasey, Merseyside, CH44 2AQ
T. 0151 638 6313 | E. sales@bakewellhorner.co.uk
<https://www.bakewellhorner.co.uk/>