



**192 Park Road South, Newton-Le-Willows, WA12 8HX**  
**Offers In The Region Of £250,000**




**192 Park Road South, Newton-Le-Willows, WA12 8HX  
Offers In The Region Of £250,000**

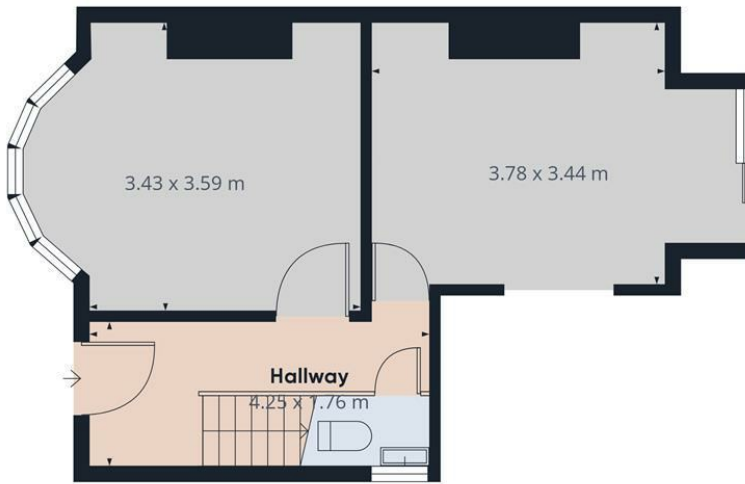




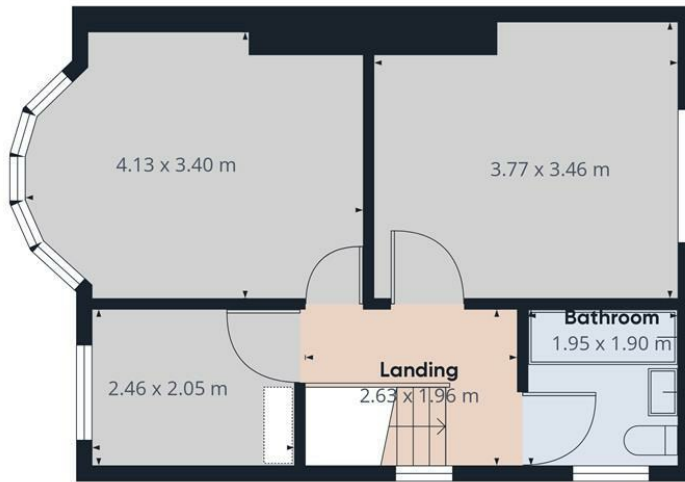




Energy Efficiency Rating		
	Current	Potential
Very energy efficient - lower running costs		
(92 plus) <b>A</b>		
(81-91) <b>B</b>		
(69-80) <b>C</b>		
(55-68) <b>D</b>		
(39-54) <b>E</b>		
(21-38) <b>F</b>		
(1-20) <b>G</b>		
Not energy efficient - higher running costs		
<b>England &amp; Wales</b>		EU Directive 2002/91/EC 



Floor 0



Floor 1

Approximate total area<sup>®</sup>  
74.26 m<sup>2</sup>

(1) Excluding balconies and terraces

While every attempt has been made to ensure accuracy, all measurements are approximate, not to scale. This floor plan is for illustrative purposes only.

Calculations are based on RICS IPMS 3C standard.

GIRAFFE360

These particulars, whilst believed to be accurate are set out as a general outline only for guidance and do not constitute any part of an offer or contract. Intending purchasers should not rely on them as statements of representation of fact, but must satisfy themselves by inspection or otherwise as to their accuracy. No person in this firm's employment has the authority to make or give any representation or warranty in respect of the property.

**93-95 Wallasey Road, Wallasey, Merseyside, CH44 2AQ**  
**T. 0151 638 6313 | E. management@bakewellhorner.co.uk**  
**<https://www.bakewellhorner.co.uk>**