



Rowland Cottage, 11 Welfen Lane,
Claypole, Newark, NG23 5AL

£449,950
Tel: 01636 611 811

 **RICHARD
WATKINSON**
PARTNERS
Surveyors, Estate Agents, Valuers, Auctioneers

Well positioned in the charming village of Claypole, near Newark, this superbly restored detached period cottage on Welfen Lane offers a perfect blend of modern luxury and traditional character. Spanning an impressive 1,985 square feet, this beautifully renovated home boasts three spacious reception rooms, providing ample space for both relaxation and entertaining.

The heart of the home is the open-plan dining kitchen, featuring high-quality shaker design units that create a warm and inviting atmosphere. This area is perfect for family gatherings or hosting friends. The property also includes a welcoming hallway with stylish designer floor tiles and a bespoke centre dividing staircase, adding to the cottage's unique charm. Additionally, there is a useful utility room and convenient downstairs WC.

With four well-appointed double bedrooms on the first floor, this residence is ideal for families or those seeking extra space. Three of the bedrooms benefit from their own en-suite shower room, offering convenience and privacy for all occupants.

Outside, the property is equally impressive, featuring a private garden and a patio terrace, perfect for enjoying the tranquil surroundings or hosting summer barbecues. The driveway has parking for two cars.

This stunning home, with its high standard of renovation and thoughtful design, is a rare find in the desirable area of Claypole. It presents an exceptional opportunity for those looking to enjoy a peaceful village lifestyle while being within easy reach of Newark's amenities. Don't miss the chance to make this remarkable property your own.

The village of Claypole is situated approximately 5 miles south of Newark with a good range of amenities including a public house, village convenience shop, the popular side house cafe, hairdressers and a well-regarded primary school, which has a good Ofsted report. Access points to the A1 are just over 1 mile. There are very good communications in this area including regular rail services from Grantham and Newark railway stations to London Kings Cross with journey times of around 1 hour 15

minutes. The village is approached by country lanes and with surrounding countryside there are miles of walks and cycle rides.

The cottage is constructed of brick elevations under a pantile roof covering. The living accommodation is arranged over two levels and can be further described as follows:

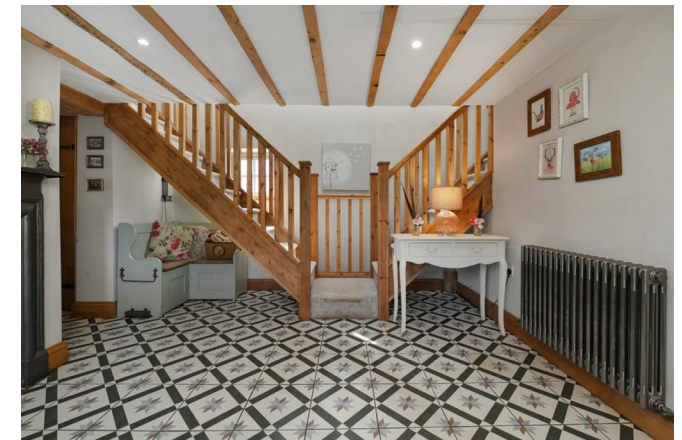
GROUND FLOOR

RECEPTION HALLWAY

12'11 x 10'6 (3.94m x 3.20m)



Wooden front entrance door with etched glass panel. Wood framed double glazed side window, traditional style radiator. Original case iron fireplace and log storage area. Quarry tiled hearth, beamed ceiling, LED downlights, attractive wooden centre dividing staircase. Built in cupboard with wooden door.





LOBBY

Double built in cupboard with wooden centre opening doors housing the Viessman central heating system boiler and double hot water cylinder.

UTILITY ROOM

6'6 x 4' (1.98m x 1.22m)



Plumbing for automatic washing machine, beamed ceiling and LED downlights. Oak working surfaces, double wall cupboard.

WC

With low suite WC, pedestal wash hand basin, tiling to

splashbacks, double glazed window to front elevation. LED downlights and beamed ceiling. Heating chrome towel radiator.

OPEN PLAN DINING KITCHEN

20'5 x 12'8 (6.22m x 3.86m)



A set of wooden double glazed French doors to the side elevation give access to the garden. There are two double glazed windows to the front elevation. High quality vinyl flooring to a herringbone design. Beamed ceiling and LED downlights. Two traditional style central heating radiators. Range of attractive modern wood grain effect Shaker design kitchen units comprise base cupboards and drawers with wood block working surfaces over, Belfast sink with mixer tap. Tiled splashbacks. Integral dishwasher, electric cooking range. Space for a dining table and comfortable seating.



DINING ROOM

12'11 x 11'1 (3.94m x 3.38m)



Traditional style central heating radiator, double glazed window to front elevation, cast iron hob fireplace, stone hearth. Built in cupboard, wall lights, beamed ceiling.

FAMILY ROOM

12'10 x 12'10 (3.91m x 3.91m)



Cast iron hob fireplace, double glazed window to front elevation, beamed ceiling and wall lights.

LOUNGE

17'10 x 17'6 (5.44m x 5.33m)



Brick built fireplace and hearth with wooden mantle over housing a wood burning stove. Vaulted ceiling and two Velux roof lights, two double glazed windows to the front elevation. Two traditional style central heating radiators. Wooden front entrance door with etched glass light.



FIRST FLOOR

LANDING

With radiator and Velux roof light.

BEDROOM ONE

19'3 x 11'10 (5.87m x 3.61m)



Two double glazed windows to front elevation, one double glazed window to side elevation. Two central heating radiators, vaulted ceiling. LED downlights, two Velux roof lights. Two built in double wardrobes.

EN-SUITE BATHROOM

7'5 x 6'9 (2.26m x 2.06m)



Fitted with a traditional style white suite including a freestanding roll top bath with mixer tap and shower attachment, low suite WC, wash hand basin with mixer tap and vanity cupboard under. Double shower cubicle with glass screen door. Designer wall tiling and rain shower. Wood effect ceramic tiled flooring, quality part tiled walls to the splashbacks, wall mounted heated chrome towel radiator. Double glazed window to front elevation.

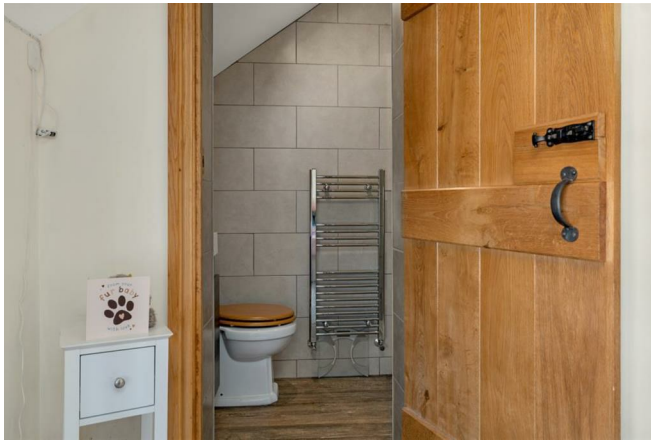
BEDROOM TWO

13' x 9'3 (3.96m x 2.82m)



Double glazed window to front elevation, vaulted ceiling, LED downlights, built in wardrobe.

EN-SUITE SHOWER ROOM



Suite comprising low suite WC, wash hand basin with vanity unit, shower cubicle, fully tiled walls.

BEDROOM THREE

12'8 x 9'4 (3.86m x 2.84m)

Radiator, double glazed window to front elevation.

EN-SUITE SHOWER ROOM

Fully tiled walls, ceramic tiled floor. Suite comprising wash hand basin with vanity unit, low suite WC, shower cubicle with glass screen door. Tiling to walls, wall mounted shower, LED ceiling lights, extractor fan.

BEDROOM FOUR

8'10 x 7'10 (2.69m x 2.39m)

(plus door recess 4'3 x 2')

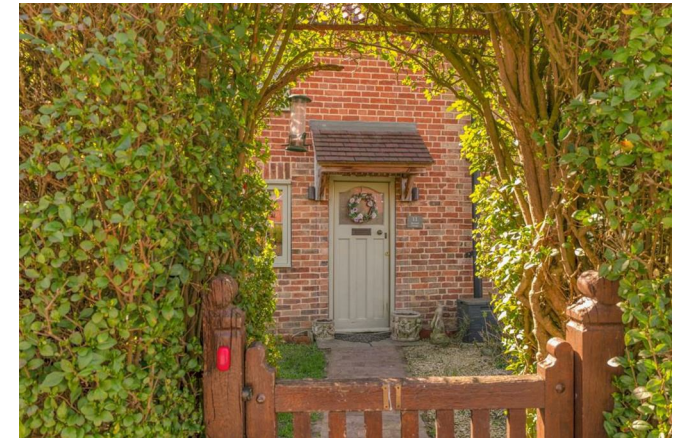
Built in wardrobe, double glazed window to front elevation, radiator.

OUTSIDE



There is a double driveway with gravelled hardstanding for two vehicles. Wooden fence panels to the side and rear boundary. Gateway leading to the boundary. The main gardens are located to the side of the house with French doors connecting from the kitchen. The gardens are laid out with a paved patio terrace partly enclosed by a low brick built wall. A brick paved pathway leads to the driveway. There is a garden area laid to lawn with attractive flower borders. The enclosure is completed by hedgerow to the frontage and fence panels to the side and rear boundaries.

To the frontage there is a high boundary hedgerow which gives the front garden a good degree of privacy. A wooden hand gate gives access and leads to a brick paved pathway to the front door. The pathway also extends along the front of the property. There are pleasant front garden areas.





MORTGAGE

Mortgage advice is available through our Mortgage Adviser. Your home is at risk if you do not keep up repayments on a mortgage or other loan secured on it.

COUNCIL TAX

The property comes under Newark and Sherwood District Council Tax Band E.



TENURE

The property is freehold.

SERVICES

Mains water, electricity, gas and drainage are all connected to the property. The central heating is gas fired provided by a Viessman system boiler.

POSSESSION

Vacant possession will be given on completion.

VIEWING

Strictly by appointment with the selling agents.



Total area: approx. 181.2 sq. metres (1950.1 sq. feet)



Energy Efficiency Rating		
	Current	Potential
Very energy efficient - lower running costs		
(92 plus) A		
(81-91) B		
(69-80) C		
(55-68) D		
(39-54) E		
(21-38) F		
(1-20) G		
Not energy efficient - higher running costs		
	73	83
England & Wales		EU Directive 2002/91/EC



These particulars, whilst believed to be accurate are set out as a general outline only for guidance and do not constitute any part of an offer or contract. Intending purchasers should not rely on them as statements of representation of fact, but must satisfy themselves by inspection or otherwise as to their accuracy. No person in this firm's employment has the authority to make or give any representation or warranty in respect of the property. Any fixtures and fittings not mentioned in these details are excluded from the sale price. No services or appliances which may have been included in these details have been tested by the selling agent and therefore cannot be guaranteed to be in good working order.

As part of the service we offer we may recommend ancillary services to you such as mortgage advice, solicitors and surveyors which we believe will help with your property transaction. We wish to make you aware that should you decide to proceed we may receive a referral fee or equivalent. This could be a fee, commission, payment or other reward. We will not refer your details unless you have provided consent for us to do so. You are not under any obligation to provide us with your consent or to use any of these services. You are also free to choose an alternative provider.

Thinking of selling? For a FREE no obligation quotation call 01636 611 811



RICS



Richard Watkinson & Partners is the trading name of Richard Watkinson Ltd.
Registered in England. Ltd Registration number: 07140024

25 Stodman Street,
Newark NG24 1AT
Tel: 01636 611 811
Email: newark@richardwatkinson.co.uk



**RICHARD
WATKINSON
PARTNERS**

Surveyors, Estate Agents, Valuers, Auctioneers