



**15 Palmer Road, Sutton-On-Trent, Newark,
NG23 6PP**

GUIDE PRICE £525,000 - £550,000

Tel: 01636 611811

 **RICHARD
WATKINSON
PARTNERS**
Surveyors, Estate Agents, Valuers, Auctioneers

A superb detached Edwardian family home with six bedrooms well positioned on this plot with wraparound gardens and a driveway providing ample off road car parking. The property has been sympathetically modernised throughout in recent years and benefits from an oil fired central heating system which had a new boiler fitted in 2015, and some replacement uPVC double glazed windows. Planning permission has been granted for a wraparound side extension with all conditions discharged.

The living accommodation comprises entrance hall, lounge, family sitting room, open plan living and dining kitchen, conservatory, rear hall and WC. Moving to the first floor bedroom one has an en-suite shower room and there are three further double bedrooms and the family bathroom located on the mezzanine level. The attic conversion, completed by the owner in recent years, provides two further bedrooms, both with en-suite shower rooms, ideal for growing children.

Outside, the house is well positioned on this plot with wraparound gardens on three sides which enjoy a good degree of privacy. The driveway offers ample off road parking for several vehicles. A brick built outbuilding provides a workshop, store and home office, ideal for those who work from home. The property is well presented and offers living accommodation ideal for a large family looking for a home in a well served village location with amenities and a primary school. Viewing is highly recommended.

Sutton on Trent is an attractive village situated just 8 miles north of Newark and within commuting distance of Nottingham, Lincoln, Retford and Doncaster. Village amenities include a Co-Op convenience store, the Lord Nelson pub, two hairdressers, a medical centre and the Sutton on Trent primary and nursery school which has a good Ofsted report from May 2023. There is secondary schooling at the nearby Tuxford Academy (4 miles) which is rated good by Ofsted. Attractive countryside and riverside walks can be enjoyed all around the village with a network of public footpaths, bridleways and country lanes connecting to the beautiful surrounding countryside and neighbouring villages. There are regular low floor bus

services available to Newark and Retford provided by Marshall's of Sutton on Trent. The A1 dual carriageway is 2 miles away and provides fast journey times to the major centres. Newark Northgate railway station has fast trains connecting to London King's Cross with journey times around 1 hour 30 minutes.

This fine double fronted detached Edwardian home is believed to date from circa 1900-1910. The attic conversion providing two further bedrooms has been completed by the current owners in recent years. Constructed with brick elevations under a slate roof, the living accommodation can be described in more detail as follows:

GROUND FLOOR

STORM PORCH

With part period wall tiling and a front entrance door.

ENTRANCE HALL

With panelled staircase rising to the first floor level. Period Dado, feature arch and exposed floorboards. Radiator.

LOUNGE

20'3 x 13'1 (6.17m x 3.99m)



A lovely period room with exposed floorboards and a period fire surround with over mantle and a mirror. Open fireplace with tiled surround. Walk-in bay with box sash window and secondary glazing to the front elevation,

uPVC double glazed window to the side elevation, picture rail, tv point and two radiators.

FAMILY SITTING ROOM

14'6 x 13'1 (4.42m x 3.99m)



This comfortable sitting room has a tiled fireplace and hearth housing a wood burning stove. There is a walk-in bay to the front with a box sash window and secondary glazing. Sliding wooden glazed doors connect to the dining area and kitchen.

DINING AREA

9'11 x 9'3 (3.02m x 2.82m)

Bi-folding wooden glazed doors connect to the conservatory. Radiator, open plan to kitchen.

KITCHEN

15'11 x 6'11 (4.85m x 2.11m)



Kitchen units were fitted in January 2024 and comprise a range of grey graphic Shaker design base cupboards and drawers with wood block working surfaces over, inset composite sink and drainer with boiling water tap, tiled splashback, two tall larder cupboards with shelving, high level cupboard and space for an American style fridge freezer. Beko electric cooking range with hob and oven. Pantry recess with solid wood shelving and wall panelling and the Grant oil fired central heating boiler which was installed in 2015. Built in bookshelf.



CONSERVATORY

15'10 x 12'9 (4.83m x 3.89m)



A wood framed double glazed conservatory built on a brick base with French doors giving access to the garden. Laminate floor covering.

UTILITY ROOM

7' x 6'8 (2.13m x 2.03m)

Wooden part glazed entrance door, uPVC double glazed rear facing window. Plumbing for automatic washing machine, plumbing for dishwasher. Wood block working surface.

REAR HALL

With cupboard below the stairs. Cloaks cupboard with shelving and sliding doors.

WC

Having a low suite WC, wash hand basin with mixer tap, Metro tiling to splashback, built in cupboard, uPVC double glazed window.

FIRST FLOOR

LANDING

With uPVC double glazed window to the rear elevation, staircase leading to the attic conversion and bedrooms 5 and 6.

BEDROOM ONE

12'3 x 11'2 (3.73m x 3.40m)



Having an original cast iron hob fireplace, two built in double wardrobes. UPVC double glazed window to the front elevation, tv point and radiator.

EN-SUITE WET ROOM



UPVC double glazed window to the front elevation,. Walls are fully tiled with wood effect tiling. Walk in shower, floor drain, wall mounted hand and rain head shower, wash hand basin with mixer tap, wall cabinet over with mirrored doors. Electric underfloor heating, PVC ceiling panels and light.

BEDROOM TWO

12'3 x 12'4 (3.73m x 3.76m)



Having an original cast iron hob fireplace, picture rail and double wardrobe. Radiator, uPVC double glazed window to the front elevation.

BEDROOM THREE

13' x 9'3 (3.96m x 2.82m)



With an original cast iron hob fireplace, uPVC double glazed window to the rear elevation, radiator.

BEDROOM FOUR

9'11 x 9'3 (3.02m x 2.82m)



Original floorboards. UPVC double glazed window to the rear elevation.

MEZZANINE FLOOR

FAMILY BATHROOM

13'10 x 6'11 (4.22m x 2.11m)



White suite comprises a freestanding roll top bath with shower over, low suite WC and twin wash hand basins each with chrome mono-block mixer taps mounted on a reclaimed wooden vanity unit with storage drawers. Metro style styling to splashbacks, extractor fan and radiator. UPVC double glazed windows to the rear and side elevations. Built in airing cupboard housing a Tempest pressurised hot water cylinder and slatted shelving.

SECOND FLOOR (ATTIC CONVERSION)

LANDING

With Velux roof lights, eaves with built in storage drawer.

BEDROOM FIVE

13'9 x 8'11 (4.19m x 2.72m)

(maximum measurement, restricted head height)



BEDROOM SIX

13'10 x 5'10 (4.22m x 1.78m)
(plus 7'11 x 2'11, maximum measurement with restricted head height)



Velux roof light, LVT floor, radiator, wardrobe alcove with wood panelling and hanging rail. Eaves with box storage.

EN-SUITE

7'7 x 2'9 (2.31m x 0.84m)



Full Metro tiling to the walls, extractor. LED ceiling lights, LVT flooring, towel radiator. White suite comprising low suite WC, wash hand basin with mixer tap, tiled shower cubicle with shower over and a folding glass screen door.

EN-SUITE SHOWER ROOM

7' x 2'9 (2.13m x 0.84m)



Full Metro tiling to the walls, extractor fan, towel radiator, LED ceiling lights, LVT flooring. White suite comprising low suite WC, wash hand basin with mixer tap, tiled shower cubicle with shower over and folding glass screen door.

OUTSIDE

OUTBUILDING

A brick and pantiled outbuilding comprising a:

GARAGE/WORKSHOP

13'11 x 12'3 (4.24m x 3.73m)
With centre opening doors, power and light connected.

HOME OFFICE

10'9 x 6'2 (3.28m x 1.88m)
With power and light connected. This space is ideal for those who work from home or run a small business.



Outside the property is well positioned on a good sized plot with wraparound gardens on three sides. The versatile gardens offer a good degree of privacy. The rear gardens are laid with astro-turf. A composite fence with gate leads to the front and there is a brick built boundary wall at the rear. Timber shed and playhouse.

Moving through to the allotment gardens, the brick boundary wall continues along the rear. This area is laid out with vegetable plots, with a covered area suitable for housing a hot tub, and a raised patio terrace with decking, potting shed/greenhouse.



The main gardens are positioned at the sides. Enclosed and well screened with trees and shrubs, this area is laid to lawn with a composite fence and gate leading to the front garden.

The front garden has a concrete path leading to the storm porch and front door, lawned garden areas with mixed hedgerows and trees to the frontage providing screening. Wrought iron hand gate. Slate chippings to the borders. The driveway is located on the east side of the property with hardstanding providing ample off road parking for several family cars.



SERVICES

Mains water, electricity and drainage are all connected to the property. There is no mains gas available in Sutton on Trent. The central heating system is oil fired. The Grant oil fired central heating boiler was installed in 2015 and is located in the kitchen.

TENURE

The property is freehold.

VIEWING

Strictly by appointment with the selling agents.

POSSESSION

Vacant possession will be given on completion.

MORTGAGE

Mortgage advice is available through our Mortgage Adviser. Your home is at risk if you do not keep up repayments on a mortgage or other loan secured on it.

COUNCIL TAX

The property comes under Newark and Sherwood District Council Tax Band E.

PLANNING PERMISSION

Planning permission has been granted under Newark & Sherwood District Council reference 17/01358/FUL) for a

wraparound side extension. Details are available on the Newark & Sherwood District Council website <https://www.newark-sherwooddc.gov.uk/viewcommentplanningapplication>. The application has had all conditions discharged (Ref. No: 20/00768/DISCON) and has been implemented through the conversion of the loft space which formed part of the permission,

Ground Floor

Approx. 98.7 sq. metres (1061.9 sq. feet)



Total area: approx. 206.4 sq. metres (2221.6 sq. feet)

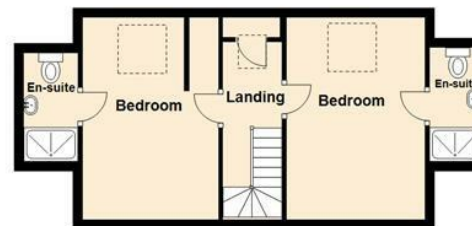
First Floor

Approx. 72.8 sq. metres (783.1 sq. feet)



Second Floor

Approx. 35.0 sq. metres (376.5 sq. feet)





Energy Efficiency Rating		
	Current	Potential
Very energy efficient - lower running costs		
(92 plus) A		
(81-91) B		
(69-80) C		
(55-68) D		
(39-54) E		
(21-38) F		
(1-20) G		
Not energy efficient - higher running costs		
England & Wales		EU Directive 2002/91/EC

68

41



These particulars, whilst believed to be accurate are set out as a general outline only for guidance and do not constitute any part of an offer or contract. Intending purchasers should not rely on them as statements of representation of fact, but must satisfy themselves by inspection or otherwise as to their accuracy. No person in this firm's employment has the authority to make or give any representation or warranty in respect of the property. Any fixtures and fittings not mentioned in these details are excluded from the sale price. No services or appliances which may have been included in these details have been tested by the selling agent and therefore cannot be guaranteed to be in good working order.

As part of the service we offer we may recommend ancillary services to you such as mortgage advice, solicitors and surveyors which we believe will help with your property transaction. We wish to make you aware that should you decide to proceed we may receive a referral fee or equivalent. This could be a fee, commission, payment or other reward. We will not refer your details unless you have provided consent for us to do so. You are not under any obligation to provide us with your consent or to use any of these services. You are also free to choose an alternative provider.

Thinking of selling? For a FREE no obligation quotation call 01636 611811



RICS



Richard Watkinson & Partners is the trading name of Richard Watkinson Ltd.
Registered in England. Ltd Registration number: 07140024

35 Kirkgate,
Newark NG24 1AD
Tel: 01636 611811
Email: newark@richardwatkinson.co.uk

**RICHARD
WATKINSON
PARTNERS**

Surveyors, Estate Agents, Valuers, Auctioneers