



Oak House, 5 Castle Farm Lane, Worksop,
S80 3AG

Asking Price £895,000

Tel: 01636 611 811

 **RICHARD
WATKINSON**
PARTNERS
Surveyors, Estate Agents, Valuers, Auctioneers

A fine countryside residence providing two reception rooms, games room, spacious fitted kitchen, five bedrooms, all en-suite and beautiful grounds extending to 1 acre or thereabouts. The rooms are all south facing with a delightful aspect of the garden and woodland beyond. The property is situated on a private road with a number of high value properties within this delightful countryside location, whilst convenient for Worksop, the M1 and A1, Retford and Newark mainline railway stations. The property is within close proximity to Clumber Park.

The tall wide window openings and bays provide especially light and airy rooms. The accommodation flows with ample storage and no wasted space. The property is approached by two pairs of field gates with a tarmac driveway and turning. The grounds are well laid out with minimum maintenance required and neatly cut grass. The detached garage and brick built garden store have security systems. The property is well maintained and nicely decorated throughout.

The ground floor accommodation provides a porch entrance, reception hall, archway recess, cloakroom, lounge with bay window, separate dining room with bay window, games room, a fitted kitchen with Rangemaster, utility and rear entrance cloakroom. The first floor provides a galleried landing, master bedroom suite with bay window and en-suite, guest bedroom with bay window and en-suite, bedroom three with bay window and en-suite, lobby with two gas boilers providing independent heating and hot water on ground and first floor levels, bedroom four with en-suite and bedroom five/study with en-suite and walk-in wardrobe. Mains gas is connected to the property.

Castle Farm Lane is adjacent to the Worksop Manor Estate. The entrance is secluded and this is a private road. The garden extends to established woodland adjacent to the south boundary. Just opposite to the property is newly planted woodland. Indeed, an idyllic location whilst only a mile or so from Worksop town centre. The location is also convenient for access points to the M1, A1 commuting to Sheffield, Retford, Doncaster and Newark.

There are excellent schools in the Worksop area. The Outwood Academy Valley has been rated outstanding by Ofsted. Worksop College and Ranby House Independent Schools are nearby.

The 1 acre plot was sold by the Estate circa 1925 when Oak House was originally constructed. Extensions were built 1955 and by the present owners around 1990. The property has rendered masonry elevations under a slate roof. Double glazed windows are mostly leaded lights. Central heating is gas fired and the following accommodation is provided:

GROUND FLOOR

ENTRANCE PORCH

With panelled entrance door, Quarry tiled floor, dado rail and moulded ceiling cornice.

RECEPTION HALL

Staircase, moulded ceiling cornice, dado rail and fitted wall lights. Archway and recess.

CLOAKROOM

Low suite WC, basin, radiator, extractor and wall light.

LOUNGE

24'6 x 13' (7.47m x 3.96m)

(measured into the south facing bay window plus recess 13' x 8'2)



A focal point of the room is the fine stone fireplace surround with fitted gas stove. Two radiators and moulded ceiling cornice. Centre opening doors to the dining room, linking the two rooms for entertaining purposes.





DINING ROOM

17' x 13'3 (5.18m x 4.04m)
(measured into the south facing bay window)



Cove ceiling cornice, two double panelled radiators.

INNER HALL

With radiator, moulded ceiling cornice and dado rail.

GAMES ROOM

22'3 x 16'11 (6.78m x 5.16m)



Full size snooker table and light unit. Two radiators, wall fitted picture light.

KITCHEN

16'9 x 14'10 (5.11m x 4.52m)
(measured into the south facing bay window).



Fitted wall cupboards, base units and granite working surfaces incorporating a Belfast sink. Rangemaster with six burner gas hob, Smeg multi-function microwave, tall freezer and separate refrigerator. Integrated dishwasher. The units incorporate an island breakfast bar. LED ceiling lighting.



UTILITY ROOM

9'2 x 5'11 (2.79m x 1.80m)



With pantry cupboard, sink unit and drainer, wall cupboards, plumbing for a washing machine. LED lighting and external door.

CLOAKROOM



With low suite WC, basin with cabinets, radiator.

FIRST FLOOR

GALLERIED LANDING

With radiator and moulded ceiling cornice.

MASTER BEDROOM ONE

22;9 x 12;5 (6.71m;2.74m x 3.66m;1.52m)
(measured into the bay plus 8'3 x 7'5)



Extensive range of fitted wardrobes comprising two double and two single, two bedside tables and high level cupboards, plus a range of three double wardrobes. Double panelled radiators.



EN-SUITE

7'10 x 5'6 (2.39m x 1.68m)



Shower with glass screen, twin basins and cupboards. Low suite WC, chrome heated towel rail.

GUEST BEDROOM TWO

17'2 x 13'3 (5.23m x 4.04m)
(measured into the south facing bay)



Radiator.

EN-SUITE

7'4 x 4'2 (2.24m x 1.27m)

With shower, vanity unit with basin, low suite WC. Fully tiled walls, radiator.

BEDROOM THREE

17'2 x 11'5 (5.23m x 3.48m)

(measured into the south facing bay)



EN-SUITE

7'6 x 3'9 (2.29m x 1.14m)

Shower cubicle, basin with cabinets, low suite WC. Fully tiled walls, extractor, radiator and fluorescent lighting.

LOBBY

With walk-in airing cupboard containing the two gas fired central heating boilers and the hot water cylinders. The boilers independently provide ground floor heating and separately a boiler for the first floor radiators and hot water system.

BEDROOM FOUR

14'7 x 9'6 (4.45m x 2.90m)

(excluding the door reveal)



South facing, Fitted wardrobes, radiator.

EN-SUITE

6'3 x 5'8 (1.91m x 1.73m)



Shower cubicle, low suite WC, basin, bidet, fully tiled walls and fluorescent lighting.

BEDROOM FIVE/STUDY

9'10 x 8'2 (3.00m x 2.49m)



Window with front aspect. Radiator.

DRESSING ROOM/WALK IN WARDROBE

9' x 4'5 (2.74m x 1.35m)

Connecting door to the lobby.

EN-SUITE

8' x 5'5 (2.44m x 1.65m)



Bath with shower attachment/rain shower. Basin, low suite WC, half tiled walls and chrome heated towel rail.

OUTSIDE



GARAGE

22' x 14' (6.71m x 4.27m)

Constructed of brick elevations under a slated roof. Folding doors, Crittal metal framed windows, fluorescent light and power points.

There are two sets of field gates providing entrances to the property with turning and parking space. Tarmacadam surface to the side of the property with a secure gate. Outside power point and TV point.

The rear garden extends to the south of the property. The long garden with lawn, concrete posts and vertical boarded fencing to the upper side boundaries.

GREENHOUSE

12' x 10' (3.66m x 3.05m)

With water and electricity connected.

GARDEN STORE

25' x 10' (7.62m x 3.05m)



Of brick construction under a tiled roof. Fluorescent lighting, power points and water connected. Two separate security alarm systems.



There is a neat vegetable garden and compost clamp.

There is an extensive paved patio area adjacent to the south elevation of the house.





POSSESSION

Vacant possession will be given on completion.

VIEWING

Strictly by appointment with the selling agents.

COUNCIL TAX

The property comes under Bassetlaw District Council Tax Band G.



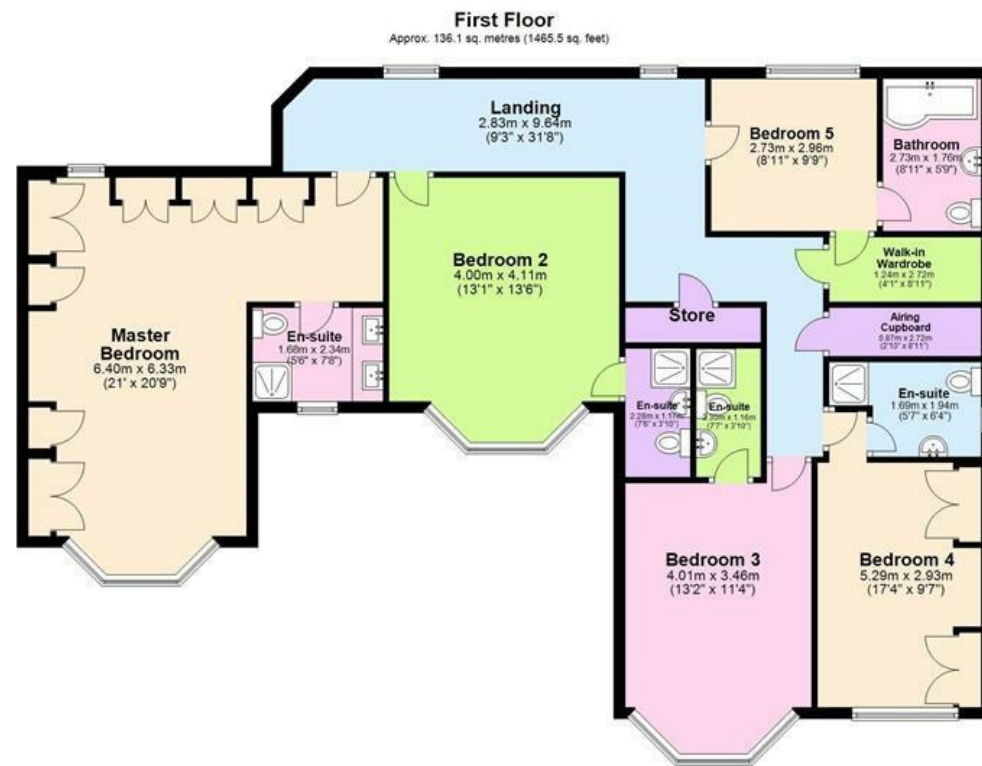
SERVICES

Mains water, electricity, gas are all connected to the property. Drainage is by means of a septic tank with a soak away system.

TENURE

The property is freehold.

Disclosure - the Vendor's of this property are related to a Director of Richard Watkinson & Partners.



Total area: approx. 276.0 sq. metres (2971.2 sq. feet)

Whilst every effort has been made to ensure the accuracy of the floor plan contained here, measurements are approximate and no responsibility is taken for any error, omission or mis-statement.
Plan produced using PlanUp.





Energy Efficiency Rating		
	Current	Potential
Very energy efficient - lower running costs		
(92 plus) A		
(81-91) B		78
(69-80) C		
(55-68) D	58	
(39-54) E		
(21-38) F		
(1-20) G		
Not energy efficient - higher running costs		
England & Wales		EU Directive 2002/91/EC



These particulars, whilst believed to be accurate are set out as a general outline only for guidance and do not constitute any part of an offer or contract. Intending purchasers should not rely on them as statements of representation of fact, but must satisfy themselves by inspection or otherwise as to their accuracy. No person in this firm's employment has the authority to make or give any representation or warranty in respect of the property. Any fixtures and fittings not mentioned in these details are excluded from the sale price. No services or appliances which may have been included in these details have been tested by the selling agent and therefore cannot be guaranteed to be in good working order.

As part of the service we offer we may recommend ancillary services to you such as mortgage advice, solicitors and surveyors which we believe will help with your property transaction. We wish to make you aware that should you decide to proceed we may receive a referral fee or equivalent. This could be a fee, commission, payment or other reward. We will not refer your details unless you have provided consent for us to do so. You are not under any obligation to provide us with your consent or to use any of these services. You are also free to choose an alternative provider.

Thinking of selling? For a FREE no obligation quotation call 01636 611 811



RICS



Richard Watkinson & Partners is the trading name of Richard Watkinson Ltd.
Registered in England. Ltd Registration number: 07140024

25 Stodman Street,
Newark NG24 1AT
Tel: 01636 611 811
Email: newark@richardwatkinson.co.uk



Surveyors, Estate Agents, Valuers, Auctioneers