



55 High Street, Sutton-On-Trent, Newark,
NG23 6QA

£435,000
Tel: 01636 611811

 **RICHARD
WATKINSON**
PARTNERS
Surveyors, Estate Agents, Valuers, Auctioneers

A fine traditionally built Edwardian house with bay windows, two reception rooms, extended 19ft kitchen, three bedrooms, small office and a plot extending to 450 sq. m (0.11 acre) or thereabouts. The property is situated within the Sutton-on-Trent conservation area, has a pleasant outlook to the rear over adjacent nursery gardens and open countryside beyond. The property is nicely presented, tastefully decorated and well maintained throughout.

Accommodation on the ground floor provides a porch entrance, reception hall with period archway, cloakroom and WC, lounge with bay window, dining with multi-fuel stove, extended 19ft kitchen with Rangemaster professional range, and a separate good sized utility room. The first floor provides a galleried landing, small office, three bedrooms, master en suite and family bathroom.

The property has a gravelled frontage with ample parking space. The rear garden provides a patio area, grassed area and a garden shed.

The rooms are particularly light and airy. The accommodation is well designed, providing practical family living accommodation.

Sutton-on-Trent is situated just 8 miles north of Newark and accessed via the A1 dual carriageway. The village Primary School has a good Ofsted report. The village falls within the catchment area of Tuxford Academy, which is located 4 miles away. There is a Doctors Surgery within the village, a Co-operative store and regular bus services.

Locally, there are a network of country lanes, public footpaths, and bridleways providing walks in the beautiful surrounding countryside, and along the banks of the River Trent. There are shopping facilities at nearby Newark and a recently opened M&S food store. Additionally, there are Waitrose, Morrisons, Asda and Aldi supermarkets.

Communications are excellent within the area with Newark Northgate Railway Station just a short drive and East Coast Mainline services to London's Kings Cross with journey times of just over 75 minutes.

The property is dated circa 1910, and traditionally built with brick elevations under a interlocking tiled roof. There are Rosemary tiles on the back kitchen extension. The property has part rendered elevations, bay windows and a porch canopy with Rosemary tiles. Central heating is oil fired with panelled radiators. The property is double glazed throughout.

The following accommodation is provided:

GROUND FLOOR

PORCH ENTRANCE

With tiled floor and lantern light.

ENTRANCE HALL

Panelled entrance door, under stairs cupboard, pine Edwardian archway and moulded ceiling cornice.

CLOAKROOM

With low suite WC, basin, panelled dado and tiled floor.

LOUNGE

12'5 x 14'3 (3.78m x 4.34m)



(Measured into the bay window)

Hob type fireplace surround, original picture rail and moulded ceiling cornice. Radiator.

DINING ROOM

14'3 x 13'2 (4.34m x 4.01m)



(Measured into the bay window)

Multi-fuel stove, moulded ceiling cornice, recessed LED lighting. This room is open plan with the kitchen.

KITCHEN

18'11 x 10'8 (5.77m x 3.25m)



Wall cupboards, base units and working surfaces. Rangemaster professional electric range with stainless steel hood. Work surfaces incorporating a one and a half sink unit. There are centre opening French windows to the garden, a double panelled radiator and LED lighting.



UTILITY ROOM

12'11 x 8'11 (3.94m x 2.72m)



Working surface, stainless steel sink unit, plumbing for a washing machine and cupboard containing the Firebird oil fired central heating boiler. Rear entrance door and tiled floor.

FIRST FLOOR

GALLERIED LANDING

Window in the stairwell with a pleasant view of the nursery gardens and countryside beyond. Hatch to the roof space.

BEDROOM ONE

12'11 x 12' (3.94m x 3.66m)



Hob type fireplace. Radiator.

EN SUITE



With shower, basin and low suite WC. Half tiled walls, chrome heated towel rail, extractor fan and tiled floor.

BEDROOM TWO

12'7 x 11'11 (3.84m x 3.63m)



With radiator. A good sized double bedroom.

BEDROOM THREE

12'7 x 8'11 (3.84m x 2.72m)



With radiator. A good sized double bedroom with open view.

BATHROOM

11'2 x 6'10 (3.40m x 2.08m)



Bath with mixer tap and shower attachment, basin and low suite WC. Radiator, half tiled walls, tiled floor and LED lighting.

OFFICE

4'7 x 3'11 (1.40m x 1.19m)



Useful small office.

OUTSIDE



The property has a gravelled frontage and ample parking space. The rear garden extends with paving, a lawn, shrubs, garden shed and gravelled area. The bunded oil storage tank is situated in the rear garden.



SERVICES

Mains water, electricity, and drainage are connected to the property.

TENURE

The property is freehold.

POSSESSION

Vacant possession will be given on completion.

MORTGAGE

Mortgage advice is available through our Mortgage Adviser. Your home is at risk if you do not keep up repayments on a mortgage or other loan secured on it.

VIEWING

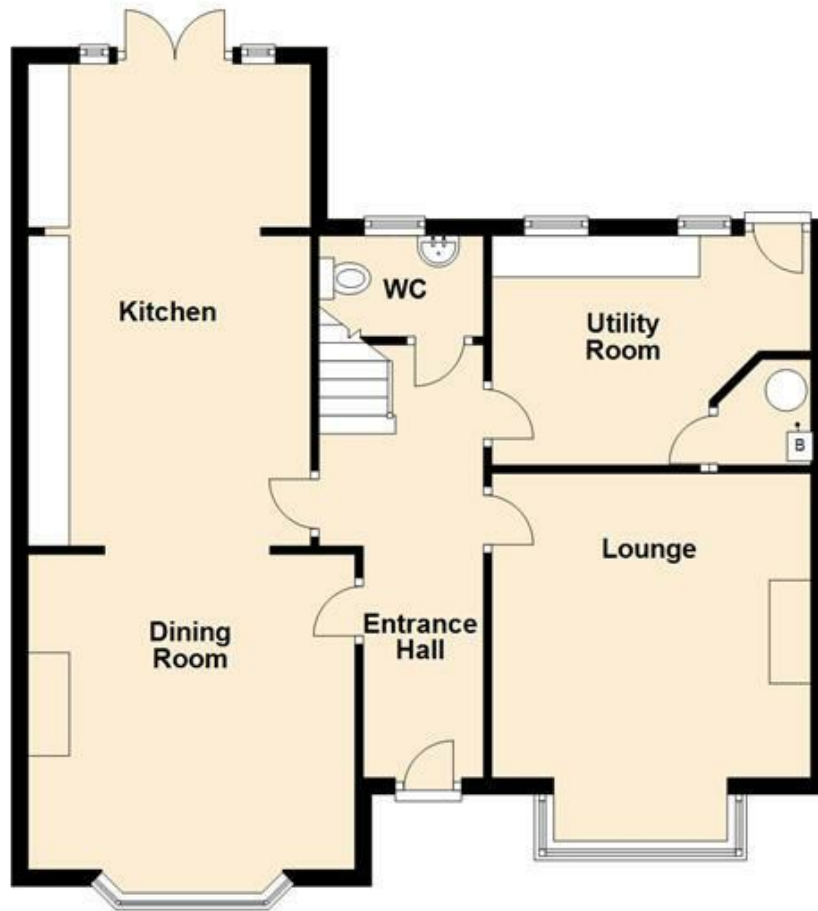
Strictly by appointment with the selling agents.

COUNCIL TAX

This property comes under Newark and Sherwood District Council Tax Band E.

Ground Floor

Approx. 74.7 sq. metres (804.0 sq. feet)



Total area: approx. 140.8 sq. metres (1515.6 sq. feet)

First Floor

Approx. 66.1 sq. metres (711.6 sq. feet)





Energy Efficiency Rating		
	Current	Potential
Very energy efficient - lower running costs		
(92 plus) A		
(81-91) B		78
(69-80) C		
(55-68) D		
(39-54) E	41	
(21-38) F		
(1-20) G		
Not energy efficient - higher running costs		
England & Wales		EU Directive 2002/91/EC



These particulars, whilst believed to be accurate are set out as a general outline only for guidance and do not constitute any part of an offer or contract. Intending purchasers should not rely on them as statements of representation of fact, but must satisfy themselves by inspection or otherwise as to their accuracy. No person in this firm's employment has the authority to make or give any representation or warranty in respect of the property. Any fixtures and fittings not mentioned in these details are excluded from the sale price. No services or appliances which may have been included in these details have been tested by the selling agent and therefore cannot be guaranteed to be in good working order.

As part of the service we offer we may recommend ancillary services to you such as mortgage advice, solicitors and surveyors which we believe will help with your property transaction. We wish to make you aware that should you decide to proceed we may receive a referral fee or equivalent. This could be a fee, commission, payment or other reward. We will not refer your details unless you have provided consent for us to do so. You are not under any obligation to provide us with your consent or to use any of these services. You are also free to choose an alternative provider.

Thinking of selling? For a FREE no obligation quotation call 01636 611811



RICS



Richard Watkinson & Partners is the trading name of Richard Watkinson Ltd.
Registered in England. Ltd Registration number: 07140024

35 Kirkgate,
Newark NG24 1AD
Tel: 01636 611811
Email: newark@richardwatkinson.co.uk



**RICHARD
WATKINSON
PARTNERS**

Surveyors, Estate Agents, Valuers, Auctioneers