



3 Chapel Farm Close, Elston, NG23 5PW

£675,000
Tel: 01636 611811

 **RICHARD
WATKINSON**
PARTNERS
Surveyors, Estate Agents, Valuers, Auctioneers

A high specification executive detached four-bedroom family home, forming part of this exclusive small development of just four homes. The development was completed in 2017 in a sought-after English village location.

A bespoke family living room and utility room extension was added in 2021. The property offers living accommodation with a high specification including a Samsung air source wet central heating system with underfloor heating on the ground floor and radiators to the first floor. The windows are of high-performance timber double glazed units.

The living accommodation is superbly presented throughout and offers in the region of 1800 sq. ft and comprises of entrance hall, a nicely appointed ground floor cloakroom, 17' lounge with a brick-built fireplace and patio doors leading to a south facing rear garden, an open plan living and dining kitchen fitted with good quality Shaker design kitchen units and integrated appliances.

The kitchen is open plan and leads wonderfully to the bespoke family sitting room extension which has a triple aspect wood burning stove, contemporary design floor to ceiling picture windows, which overlooks the picturesque garden. This is accompanied by a set of French doors leading onto the patio terrace and garden. The extension also incorporates the utility room fitted with contemporary design units and a rear door leads to the storm porch overhang and rear garden.

Leading to the first floor there is a long landing area, bedroom one with dual aspect windows and views of the meadow, en-suite shower room with stylish fittings and a double shower cubicle. The family bathroom has a quality white suite complimented by stylish wall tiling. There are two further double bedrooms and a single bedroom which is currently fitted out as a dressing room.

Outside there is a driveway providing off road car parking for four cars and an integral single garage. To the rear there are secluded landscaped gardens which wrap around the rear and the side of the house laid out with an Indian

sandstone paved patio terrace, lawned areas and a 19-meter raised sleeper flower beds with a wealth of mature plants.

Elston is conveniently situated within commuting distance of Newark, Bingham, Nottingham, Leicester and Lincoln. There are nearby access points to the A46 and A1 dual carriageways. Amenities in the village include a primary school rated good by Ofsted, the Chequers Inn which is a recently refurbished country pub and restaurant and a small community run convenience store. Nearby Newark has excellent shopping facilities which include the M&S food hall and Morrisons, Waitrose, Asda and Aldi supermarkets within the town. Newark Northgate railway station has trains connecting to London King's Cross with a journey time of 80-85 minutes. The beautiful surrounding countryside can be accessed by footpaths and country lanes which also connect to lovely surrounding villages ideal for those who enjoy outdoor pursuits such as walking or cycling.

The property is part of the exclusive Chapel Farm Close development, situated just off Low Street and is accessible by a private shared driveway. This property is ideal living accommodation for a couple, or family, seeking a good high-quality home in a well-served and sought after village location. The development sits within the village Conservation area. Viewing is highly recommended.

The accommodation can be further described as follows:

GROUND FLOOR

ENTRANCE HALL



Front entrance door, striking wood effect tiles with underfloor central heating complement the contemporary design staircase with oak handrail and glass balustrade insets, LED ceiling lights, useful storage cupboard below stairs

LOUNGE

17'4 x 15'10 (5.28m x 4.83m)



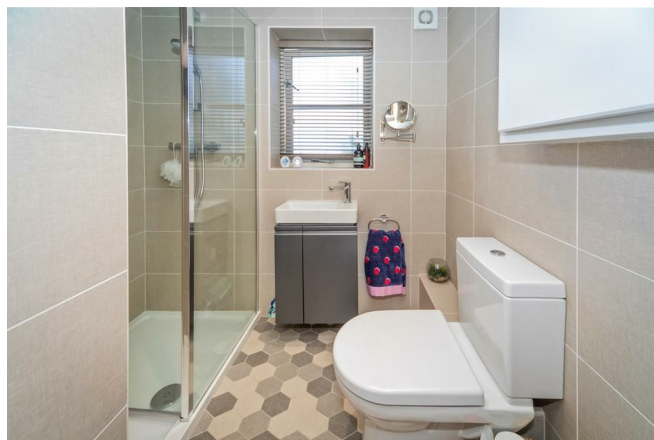
This pleasant principal reception room has a central opening double-glazed French door and two side panels giving extra light into this room and access to the south facing patio terrace and rear garden. This is a spacious,

light and airy room with double glazed windows to the front and side elevations, LED ceiling lights, Wi-Fi switch operating the rear outside lights, a brick-built fireplace with reclaimed Quarry tiled hearth and oak beam mantel from the original farmhouse on the site, housing a wood burning stove.



CLOAKROOM/SHOWER ROOM

6'7 x 4'7 (2.01m x 1.40m)



Nicely appointed with fully tiled walls and hexagonal design floor tiles. Double glazed window to rear elevation. LED downlights, extractor fan. Stylish contemporary white suite comprises a low flush WC, wash hand basin with

vanity unit below and shower. Full wall tiling to splashbacks and a wall mounted shower.

OPEN PLAN LIVING AND DINING KITCHEN

21'9 x 15'10 (6.63m x 4.83m)



This lovely open plan family kitchen has two double glazed windows to the front elevation, wood effect ceramic floor tiles and is fitted with a range of stylish Shaker design kitchen units. Incorporating base units with cupboards and pan drawers, integral waste bins, magic corner shelving. With solid oak block work surfaces, incorporating a ceramic inset one and a half bowl sink and drainer and a Red Ring boiler tap.



The large central island unit is host to base cupboards and pan drawers, bookshelves, pop up power bar with USB ports. With solid oak block work surfaces incorporating a breakfast bar and housing for several stools.

Additionally, there is a tall cupboard and wall mounted cupboards. Integral appliances include electric AEG induction hob with glass/stainless steel extractor and double oven/grill, a dishwasher and separate tall fridge and freezer. Wall mounted television point, double power points and 2 USB port sockets.

Opening through to the family sitting room extension.



FAMILY SITTING ROOM

12'8 x 10'5 (3.86m x 3.18m)



This impressive extension features three aluminium framed double-glazed floors to ceiling picture windows with African iroko wood reveals, connecting the house with the impressive rear garden. French doors to the side giving access to the garden patio – alfresco area, a vaulted ceiling, with three Velux roof lights. Exposed rustic brick work, wood effect ceramic floor tiling with under floor central heating. A Lancashire slate hearth houses a Oranier contemporary cylindrical design wood burning stove.



UTILITY ROOM

9' x 6'8 (2.74m x 2.03m)



The utility room forms part of the extension and features vaulted ceiling with Velux roof light and LED ceiling lights, designer electric smart radiator, a range of stylish matt anthracite units comprising tall/base cupboards with composite grey working surfaces over incorporating a composite stone sink and drainer with chrome mixer tap. Plumbing for washing machine, aluminium framed double-glazed window to the side elevation, extractor fan, exposed rustic brickwork. Ceramic tiled floor, Light switch for dusk-to-dawn outdoor lighting, aluminium double-glazed rear entrance door leading to the storm porch overhang and rear garden.

FIRST FLOOR

LANDING

26'7 x 3' (8.10m x 0.91m)

This long landing area has two double glazed windows to the rear, LED ceiling lights, central heating radiator and an airing cupboard housing the Tempest hot water cylinder. A series of oak doors connect to the bedrooms and bathroom.

BEDROOM ONE

15'10 x 10'3 (4.83m x 3.12m)



This comfortable principal bedroom suite has a wood framed double glazed window to the rear elevation and a new aluminium framed double glazed window to the side enjoying far reaching countryside aspects. Central heating radiator, LED ceiling lights, new carpet, power points with USB ports.

EN-SUITE SHOWER ROOM

7'1 x 4'9 (2.16m x 1.45m)

(plus 3'9 x 2'8)



This well-appointed en-suite has a contemporary white Roca design suite comprising a low flush WC with concealed cistern, contemporary wall mounted Butler's style wash basin with fitted cabinets drawers beneath and a mirror with a light and shaver point above. The walls are fully tiled with ceramic tiling to the floor. Wall mounted chrome towel radiator with timer that can be heated by electric or from the central heating. LED ceiling lights, double glazed window to side elevation. Double shower cubicle which is fully tiled with a designer split slate effect feature wall, rain head shower and a glass screen door. Extractor fan.

BEDROOM TWO

12'5 x 12' (3.78m x 3.66m)
(narrowing to 9')



Comfortable double room with double glazed window to the front elevation, radiator and LED ceiling lights, power points with USB ports.

BEDROOM THREE

13'3 x 8'4 (4.04m x 2.54m)
(plus 4'1 x 3'2)



This pleasant double bedroom has a double-glazed window to the front elevation, radiator, LED ceiling lights, power point with USB ports and the loft access hatch.

BEDROOM FOUR

9'1 x 7'2 (2.77m x 2.18m)

Currently fitted as a dressing room with a 7-bay range of open wardrobes with hanging rail and a 4-bay shelving unit. Additionally, there is storage over. Double glazed window to rear elevation, central heating radiator and LED ceiling lights.

FAMILY BATHROOM

7'2 x 7' (2.18m x 2.13m)



This well-appointed family bathroom has fully tiled walls including a feature wall with split face slate style design, wall mounted dual fuel chrome towel radiator, wall mirror and light, contemporary design Laufen suite with concealed cistern low flush WC, integral wash hand basin and counter with chrome mixer tap, quality vanity unit with drawers under. Double ended free standing bath with stylish Hansgrohe white and chrome mixer tap. LED ceiling light, Velux roof light and light tunnel, extractor fan.

OUTSIDE



The landscaped frontage has a driveway with a striking resin bonded finish. There is car parking for up to three vehicles at the front of the house and a further space to the side. There is a low maintenance area laid with Astroturf and pathway leading to the front door. The house benefits from external lights surround the side and rear of the house which operate on a dawn-to-dusk sensor.



SINGLE GARAGE

Electrically operated up and over door, double power point and light, wooden double-glazed personal door to the rear giving access to the garden.

REAR GARDEN



The secluded south facing rear garden is L-shaped and wraps around the rear and side of the house. The garden is landscaped with an Indian sandstone paved patio terrace connecting to the rear of the house with the lawned garden extending to the boundaries with laurel hedging along the eastern boundary which also overlooks the adjoining meadow. The enclosure is completed with close boarded fence to the front and rear boundaries. Pathways connect to wooden gates either side of the house which give access to the frontage. There is an electric car 3.5Kw charging point. There are hot and cold outside taps in the rear garden and outside power points to both the front and rear.

TENURE

The property is freehold.

SERVICES

Mains water, electricity, and drainage are all connected to the property. Heating is provided by the air source heat pump (air to water) firing the underfloor central heating on the ground floor and radiators on the first floor. The Samsung digital inverter is located in the garden on the east side of the property.

VIEWING

Strictly by appointment with the selling agents.

POSSESSION

Vacant possession will be given on completion.

MORTGAGE

Mortgage advice is available through our Mortgage Adviser. Your home is at risk if you do not keep up repayments on a mortgage or other loan secured on it.

COUNCIL TAX

The property comes under Newark and Sherwood District Council Tax Band E.

Ground Floor

Approx. 87.5 sq. metres (941.6 sq. feet)



Total area: approx. 152.6 sq. metres (1642.8 sq. feet)

First Floor

Approx. 65.1 sq. metres (701.2 sq. feet)





Energy Efficiency Rating		
	Current	Potential
Very energy efficient - lower running costs		
(92 plus) A		
(81-91) B		
(69-80) C		
(55-68) D		
(39-54) E		
(21-38) F		
(1-20) G		
Not energy efficient - higher running costs		
England & Wales		EU Directive 2002/91/EC



These particulars, whilst believed to be accurate are set out as a general outline only for guidance and do not constitute any part of an offer or contract. Intending purchasers should not rely on them as statements of representation of fact, but must satisfy themselves by inspection or otherwise as to their accuracy. No person in this firm's employment has the authority to make or give any representation or warranty in respect of the property. Any fixtures and fittings not mentioned in these details are excluded from the sale price. No services or appliances which may have been included in these details have been tested by the selling agent and therefore cannot be guaranteed to be in good working order.

As part of the service we offer we may recommend ancillary services to you such as mortgage advice, solicitors and surveyors which we believe will help with your property transaction. We wish to make you aware that should you decide to proceed we may receive a referral fee or equivalent. This could be a fee, commission, payment or other reward. We will not refer your details unless you have provided consent for us to do so. You are not under any obligation to provide us with your consent or to use any of these services. You are also free to choose an alternative provider.

Thinking of selling? For a FREE no obligation quotation call 01636 611811



RICS



Richard Watkinson & Partners is the trading name of Richard Watkinson Ltd.
Registered in England. Ltd Registration number: 07140024

25 Stodman Street,
Newark NG24 1AT
Tel: 01636 611811
Email: newark@richardwatkinson.co.uk

**RICHARD
WATKINSON
PARTNERS**

Surveyors, Estate Agents, Valuers, Auctioneers