



**3 Sherwood Grove, Bingham,
Nottinghamshire, NG13 8RG**

No Chain £395,000
Tel: 01949 836678

 **RICHARD
WATKINSON
PARTNERS**
Surveyors, Estate Agents, Valuers, Auctioneers

We have pleasure in offering to the market this immaculately presented, extended family home, tucked away in a small cul-de-sac setting on a pleasant, well maintained plot all within walking distance of the heart of this highly regarded and well served market town.

The property would be perfect for families being well positioned for access to local schools and providing a good level of accommodation with two main receptions. A pleasant sitting room at the front leads into a spacious open plan living/dining kitchen that has been thoughtfully modernised with a generous range of contemporary units and integrated appliances and benefits from a southerly aspect into the rear garden. The dining area of the kitchen leads through into the useful addition of a garden room at the rear which again benefits from a dual aspect having access out into the garden. In addition, leading off the initial hallway is a ground floor cloak room and staircase rising to the first floor where there are four bedrooms, the master of which benefits from ensuite facilities, and a separate family bathroom, both of which have been fully upgraded.

In addition the property benefits from UVPC double glazing, gas central heating and the added benefit of the installation of photovoltaic panels adding to it's efficiency as well as providing a feed in tariff.

The property occupies a pleasant, well maintained plot with an excellent level of off road parking, a generous garage at the rear and an enclosed garden which benefits from a southerly aspect.

Overall viewing comes highly recommended to appreciate both the location and accommodation on offer.

BINGHAM

The market town of Bingham is well equipped with amenities including a range of shops, primary and secondary schools, doctors and dentists, leisure centre and railway station with links to Nottingham and Grantham. The town is conveniently located for commuting situated at the intersection of the A52 and A46 and with good road links to the A1 and M1.

A CANOPIED PORCH WITH CONTEMPORARY WOOD GRAIN EFFECT COMPOSITE DOOR WITH DOUBLE GLAZED LIGHTS LEADS THROUGH INTO:

INITIAL ENTRANCE HALL

10'10" x 7'7" (3.30m x 2.31m)



A pleasant initial entrance vestibule having deep skirting, wood effect flooring, central heating radiator and spindle balustrade staircase rising to the first landing with useful under stairs storage cupboard beneath.

Further oak internal doors leading to:



GROUND FLOOR CLOAK ROOM

5'10" x 2'11" (1.78m x 0.89m)

Having a contemporary two piece suite comprising close coupled WC and vanity unit with inset washbasin and chrome mixer tap, contemporary towel radiator, slate effect tiled floor and double glazed window to the side.

SITTING ROOM

16'4" x 11'9" (13'7" max into bay) (4.98m x 3.58m (4.14m max into bay))



A well proportioned light and airy reception having attractive walk in bay window to the front, the focal point to the room being a finished stone fire surround, mantel and hearth with inset pebble effect gas fire, coved ceiling, central heating radiator and double glazed window.

A further door leads through into:

OPEN PLAN DINING KITCHEN

23' x 8'6" (7.01m x 2.59m)



A fantastic light and airy space benefitting from a southerly aspect that links through into a garden room at the rear which, combined, creates an excellent every day living/entertaining space, the initial dining area having central heating radiator, inset downlighters to the ceiling and double glazed window to the side and being open plan to the kitchen which is fitted with a generous range of contemporary wall, base and drawer units having quartz granite preparation surfaces providing an excellent working area, under mounted sink unit with brushed metal swan neck mixer tap, integrated appliances including ceramic electric hob with stainless steel and glass chimney hood over and double oven beneath and separate under counter fridge and freezer, plumbing for washing machine, inset downlighters to the ceiling, useful under stairs storage cupboard and double glazed window overlooking the garden.

From the dining area a large open doorway leads through into:



GARDEN ROOM

11'2" x 10'2" (3.40m x 3.10m)



A useful addition to the property providing a further versatile reception space benefitting from a dual aspect having double glazed window to the rear elevation, French doors leading out onto the courtyard and central heating radiator.



RETURNING TO THE MAIN ENTRANCE HALL A SPINDLE BALUSTRADE STAIRCASE RISES TO:

FIRST FLOOR LANDING



Having built in airing cupboard and access loft space above.

Further doors leading to:

MASTER SUITE

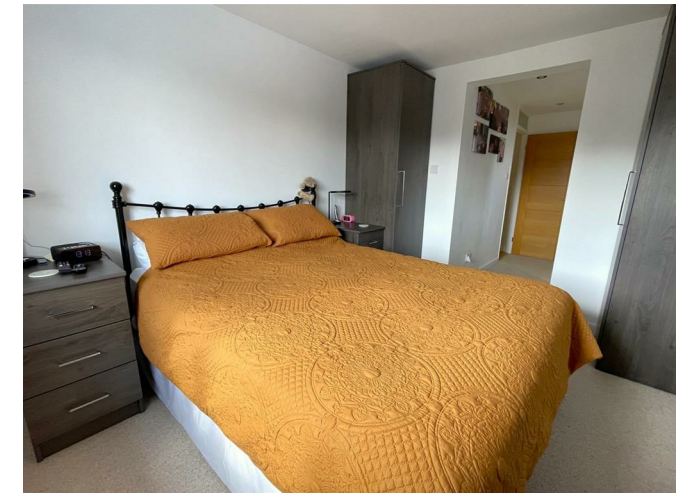
11'8" x 9'7" (3.56m x 2.92m)



An excellent master bedroom having initial walk through area which gives access into a double bedroom as well as

ensuite facilities. The double bedroom benefits from a southerly aspect looking into the rear garden having built in wardrobes, complementing drawer unit and side table, central heating radiator and double glazed window.

A sliding pocket door gives access into:



ENSUITE SHOWER ROOM

8'7" x 4'7" (2.62m x 1.40m)



Tastefully appointed with a contemporary suite comprising double width shower enclosure with sliding glass screen and wall mounted digital Mira thermostatic shower, close coupled WC, wall mounted vanity unit with inset washbasin and chrome mixer tap, contemporary towel radiator, shaver point and double glazed window to the side.

BEDROOM 2

14'7" x 8'9" (4.45m x 2.67m)



A further double bedroom having aspect to the front with a range of fitted wardrobes, complementing drawer unit and side table, over stairs cupboard, central heating radiator and double glazed window.

BEDROOM 3

9'10" x 11'8" (3.00m x 3.56m)



A further double bedroom having aspect to the front with

fitted wardrobes, matching drawer units, central heating radiator and double glazed window.

BEDROOM 4

8'8" x 6'9" min (7'11" max) (2.64m x 2.06m min (2.41m max))



Having aspect into the rear garden with central heating radiator, built in storage cupboard and double glazed window.

BATH/SHOWER ROOM

6'3" (8'11" max into shower enclosure) x 5'8" (1.91m (2.72m max into shower enclosure) x 1.73m)



Tastefully appointed with a contemporary suite comprising panelled bath with chrome mixer tap and integrated shower handset, close coupled WC, pedestal washbasin, built in shower enclosure with bifold screen and wall mounted shower mixer, contemporary towel radiator, shaver point and double glazed window to the rear.

GARAGE

20' x 11' (6.10m x 3.35m)

Having electric sectional up and over door, power and light, useful storage in the eaves above, the garage also fitted with a range of wall and base units to the rear providing useful workshop space and double glazed exterior door into the garden.

EXTERIOR



The property occupies a pleasant position within this small cul-de-sac setting, set back behind an open plan frontage on a corner plot, partly laid to lawn with adjacent driveway that provides a considerable level of off road parking and in turn leads to the detached brick built in garage. The rear garden is enclosed to all sides and benefits from a southerly aspect having initial terrace leading onto a central lawn with inset trees and shrubs.





COUNCIL TAX BAND

Rushcliffe Borough Council - Band D

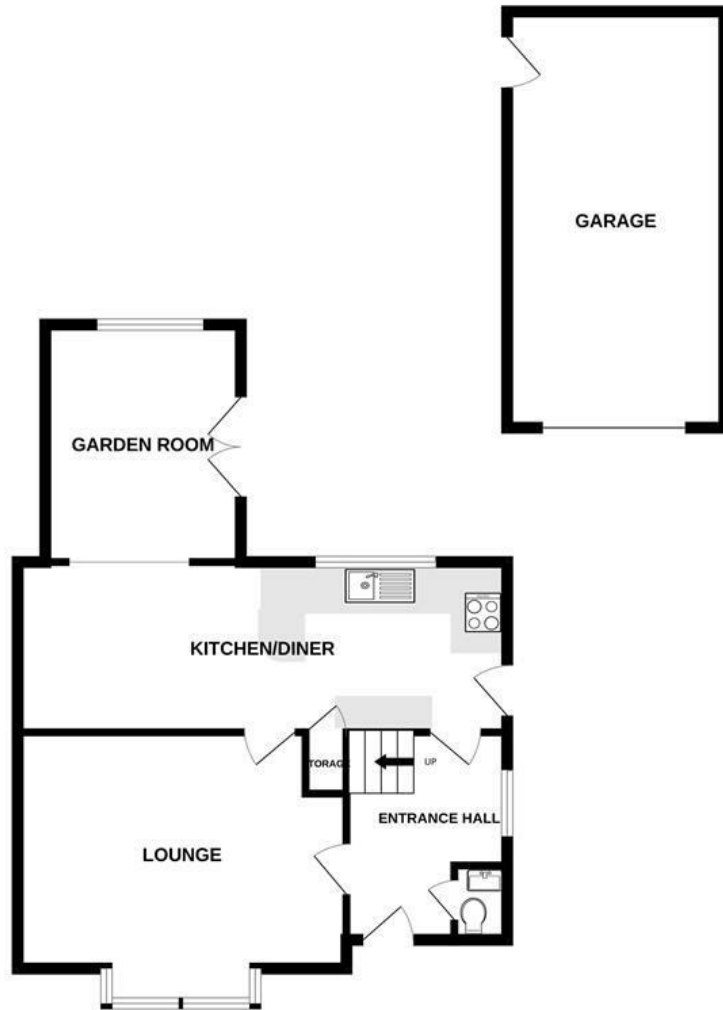
TENURE

Freehold

SOLAR PANELS

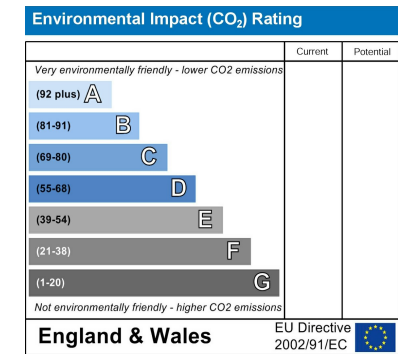
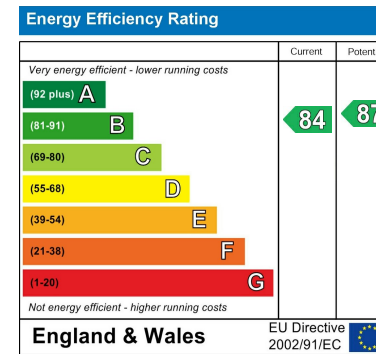
NOTE: The property is fitted with solar panels which are owned by the current Vendor.

GROUND FLOOR



1ST FLOOR





These particulars, whilst believed to be accurate are set out as a general outline only for guidance and do not constitute any part of an offer or contract. Intending purchasers should not rely on them as statements of representation of fact, but must satisfy themselves by inspection or otherwise as to their accuracy. No person in this firm's employment has the authority to make or give any representation or warranty in respect of the property. Any fixtures and fittings not mentioned in these details are excluded from the sale price. No services or appliances which may have been included in these details have been tested by the selling agent and therefore cannot be guaranteed to be in good working order.

As part of the service we offer we may recommend ancillary services to you such as mortgage advice, solicitors and surveyors which we believe will help with your property transaction. We wish to make you aware that should you decide to proceed we may receive a referral fee or equivalent. This could be a fee, commission, payment or other reward. We will not refer your details unless you have provided consent for us to do so. You are not under any obligation to provide us with your consent or to use any of these services. You are also free to choose an alternative provider.

Thinking of selling? For a FREE no obligation quotation call 01949 836678



Richard Watkinson & Partners is the trading name of Richard Watkinson Ltd.
Registered in England. Ltd Registration number: 07140024

10 Market Street,
Bingham NG13 8AB
Tel: 01949 836678
Email: bingham@richardwatkinson.co.uk



Surveyors, Estate Agents, Valuers, Auctioneers