



Norbury Crescent, Norbury

£600,000

*Welcome to this charming property located in Norbury which requires updating. This delightful semi-detached house boasts four generously sized bedrooms, perfect for a growing family or those in need of extra space. Upon entering, there are three inviting reception rooms, offering ample space for entertaining. The spacious interior of this house allows for endless possibilities when it comes to decorating and personalising each room to suit your taste and style. Offered with vacant possession.
EPC Rating TBA
Council tax band E*

Norbury Crescent, Norbury

Hallway

Reception 3 11'5" x 10'2" (3.50 x 3.10)



Reception 1 14'9" x 14'5" (4.50 x 4.40)

Kitchen 10'2" x 6'10" (3.10 x 2.10)



Reception 2 17'4" x 11'1" (5.30 x 3.40)

Shower Room



Norbury Crescent, Norbury

Bedroom 1 14'9" x 12'9" (4.50 x 3.90)



Bedroom 4 12'1" x 8'10" (3.70 x 2.70)



Bedroom 2 12'1" x 11'5" (3.70 x 3.50)



Bathroom 7'10" x 7'10" (2.40 x 2.40)



Bedroom 3 10'2" x 9'10" (3.10 x 3.00)



Back



Norbury Crescent, Norbury

Garden 73'9" x 24'7" (22.5 x 7.5)



Buyers Guide



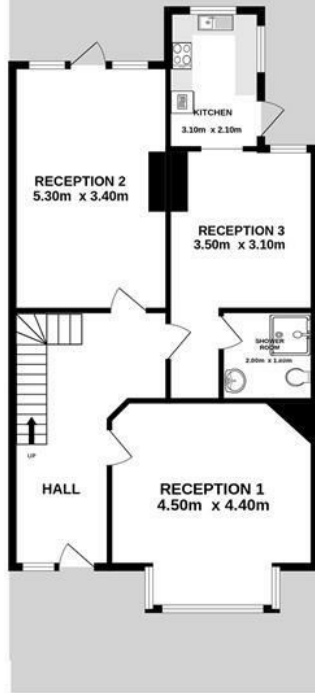


GARDEN
(approx)
22.5m x 7.5m



GROUND FLOOR
788 sq.ft. (73.2 sq.m.) approx.

1ST FLOOR
672 sq.ft. (62.4 sq.m.) approx.



TOTAL FLOOR AREA: 1460 sq.ft. (135.6 sq.m.) approx.

Whilst every attempt has been made to ensure the accuracy of the floorplan contained here, measurements of doors, windows, rooms and any other items are approximate and no responsibility is taken for any error, omission or mis-statement. This plan is for illustrative purposes only and should be used as such by any prospective purchaser. The services, systems and appliances shown have not been tested and no guarantee as to their operability or efficiency can be given.
Made with Metropix ©2024

Energy Efficiency Rating

	Current	Potential
<i>Very energy efficient - lower running costs</i>		
(92 plus) A		
(81-91) B		85
(69-80) C	69	
(55-68) D		
(39-54) E		
(21-38) F		
(1-20) G		
<i>Not energy efficient - higher running costs</i>		
England & Wales	EU Directive 2002/91/EC	

